

2021 Summer Camps

Online Registration Starts

April 5, 2021

raleighnc.gov/parks

919.996.4800



**Raleigh
Parks**



Welcome

to Raleigh Parks, Recreation and Cultural Resources

Summer Camps

We are so excited you are here!

**How to choose
the camp that is best
or your camper:**



Step 1: Choose the proper age category.

Preschool – Typically for ages 3-5

Youth – Typically for ages 6-12

Teen – Typically for ages 12-17

Step 2: Choose the type of camp.

Traditional Summer Camps – provide campers with an experience incorporating a wide variety of activities that may include games, songs, and arts/crafts.

Specialty Summer Camps – provide campers with activities centered around a particular theme or focus.

Specialized Recreation Summer Camps – are specifically designed for individuals with developmental disabilities.

Please see Summer Camp Locations and Map on pages 38 and 39.

Step 3: Read the camp description for your top choices.

Be sure to look for activities your camper will enjoy.

Ask yourself:

- Does the camp require special skills?
- Is the camp mostly indoors or outdoors?
- Does the camp require a lot of physical activity or walking?
- Does the camp include field trips or swimming?
- Is the camp location convenient for you?
- Do the camp hours accommodate your schedule?

Please call the camp contact or use the Summer Camp Locations list for specific information regarding the camp.

Step 4: Visit the camp location to ensure that you and your camper are comfortable.

Online

Registration will begin
April 5, 2021.

Walk-in

Walk-in registration begins
April 19, 2021. Registration
forms will be available online and
at the Recreation Business Office.

SUMMER CAMPS

Camp Directory

Please check individual program descriptions for specific age requirements.

Preschool (Ages 3-5)

Specialty Summer Camps

Adventures at the Park	8
Art Discoveries Jr.	8
Art in the Garden	8
Camp Rock	8
Champ Camp	8
Creative Ocean Art Exploration	8
Creepy Crawlers	8
Doll Days of Summer	8
Ed-ZOO-cation	8
Fizz, Muck, Bubbles and Goo	9
Four Seasons	9
Kaleidosports Camp	9
Kick Start to Kindergarten	9
Kindersport Camp	9
Leaps N Beats	9
Little Chefs	9
Little Scientists	10
Modern Marvels	10
One, Two, Three...Come Read With Me	10
Tea, Top Hats and Tiaras	10
The Little Pre-Fessor	10
Tot Inventor's Workshop	10
W'heelin' Wonders	10

Youth (Ages 6-12)

Specialty Summer Camps

Art4Fun	11
Adventure Stem with LEGO Materials	11
Adventures in Science	11
All American Doll Adventures Extended	11
All Dolled Up!	12
All-Sports Camp	12
Art in Motion	12
Art Time Machine	12
ArtVentures Camp	12
Baseball Camp	12
Basketball Achievements	12
Blackbeard's Revenge Pirate's Adventure!	13
Bump, Set, Spike It Up Volleyball Camp	13
Camp Compass	13
Camp Exploration	13
Craffin' Craze	13
Dance Camp	13
DIGI- Advance Minecraft: Command Block	13
DIGI- Crazy Action Contraptions	13
DIGI- EV3 Battlebots	14
DIGI- EV3 Robo-Sports	14
DIGI- EV3 Robo-Wars	14
DIGI- Extreme Coding AI & AR	14

DIGI- Extreme EV3 Robotic Engineering	14
DIGI- Game Coding: Super Mario	14
DIGI- Hacking Java Games	14
DIGI- Hogwarts Magical Engineering & Robotics	14
DIGI- Intro to Coding with Superheroes	14
DIGI- Intro to Game Coding	15
DIGI- Intro to Video Game Design with Nintendo	15
DIGI- Junior Engineering: Theme Park	15
DIGI- Minecraft Game Designer: Dungeon Sr.	15
DIGI- Minecraft Game Designer: Dungeons Jr.	15
DIGI- Multiplayer Minecraft: City Builder Jr.	15
DIGI- Multiplayer Minecraft: Colosseum Builder	15
DIGI- Multiplayer Minecraft: Mini Game Builder	15
DIGI- Multiplayer Minecraft: Theme Park Builder	16
DIGI- Multiplayer Minecraft: World Builder	16
DIGI- Python Coding	16
DIGI- Robotic Builders: Battlebots	16
DIGI- Robotic Builders: Marine Explorers	16
DIGI- Robotic Builders: Mighty Machines	16
DIGI- Star Wars Game Coding	16
DIGI- Star Wars Robotic Builders Jr.	16
DIGI- WeDo Robotic Engineering	17
DIGI-Robotic Builders: Gamer-Bots	17
DIGI-Star Wars Robotic Builders	17
Edible Engineering	17
F.A.S.T. Camp	17
Fit and Fun Camp	17
Flag Football Camp	17
Full STEAM Ahead	17
Girls in Motion Youth	17
Girls Rule Sports Camp	18
Green Road Adventures Camp	18
Hall of Fame Sports Camp	18
Happy Trails	18
Harry Potter Master Engineering w/LEGO Materials	18
Inventor's Workshop	18
Just BEAD It	18
Kamp Kiwanis	18
Kick It Up - Soccer	18
Kid Scientist	19
Kids Cup Challenge	19
Krafty Sports	19
LEGO® Brick City Architects	19
LEGO® Junior Robotics with WeDo 2.0	19
LEGO® Midway Mania	19
Let's Sew Something	19
Mad Lab	19
Master Builders	19
Nature Week at the Creek	20
Ooey Gooey Recycle Art Camp	20
Out of this World	20
Passport to Fun	20
Raleigh History Hunters	20
Science Exploration Camp	20
Sewing Camp for Beginners	20

SKATEch	21
So You Say You Can Dance Camp	21
Space Cadets	21
Spike Camp	21
Squad: Cheer and Dance Team Camp	21
Summer Explorers Lite	21
Summer X-Press Plus Camp	21
Swim and Serve: Best of Millbrook	21
Track and Field Camp	21
Twirl & Swirl	22
Ultimate Frisbee Camp	22
Wonders of Wizardry	22
World of Sports Camp	22
WOW Camp	23

Traditional Summer Camps

Summer X-Press Camp	23
Summer X-Press International	24

Teen (Ages 12-17)

Specialty Summer Camps

EnlighTEENment	26
Galactic Glow Sports Camp	26
Girls in Motion Teen	26
Leaders in Training	26
RC AERONAUTICS 1	26
Squad: Cheer and Dance Middle School Camp	27
Teens Outdoors & Occupied!	27
Youth Fire Academy	27

Traditional Summer Camps

Teen X-Treme	27
--------------	----

Specialized Recreation

Camp Exploration Day Session	30
Camp Exploration Personal Assistant Session	30
Camp Friendly Day Session	30
Camp Friendly Personal Assistant Session	31

Registration

Registration Information	4-6
Camp Parent Meetings	6
My Fun Summer Planner	7
Camp Policies	32-36
Play It Forward Scholarship Fund	37
Summer Camp Locations	38-39

Summer Camp online registration will be staggered by location, April 5-9, beginning at 6:30am each day.



Find out what day(s) to register!

- Browse the 2021 Summer Camp brochure.
- Take a look at all of our options and decide which camps work best for your family.
- Be sure you know what camp locations you would like so you know what day(s) to register.
- Also be sure to look for other camp options in case your first choice camp is full.

Monday, April 5	Tuesday, April 6	Wednesday, April 7	Thursday, April 8	Friday, April 9
<ul style="list-style-type: none"> - Brier Creek - Durant - Eastgate - Greystone - Lake Lynn - Optimist 	<ul style="list-style-type: none"> - Abbotts Creek - Barwell - Green Road - Hill Street - Lions Park - Marsh Creek - Millbrook Exchange - Worthdale 	<ul style="list-style-type: none"> - Dorothea Dix Park - Five Points Center - Fred Fletcher - Glen Eden - Halifax - Kiwanis Park - Laurel Hills - Method Road - Roberts Park - Saint Monica - Tarboro Road 	<ul style="list-style-type: none"> - Biltmore - Brentwood - Carolina Pines - Forest Ridge Park - Jaycee - John Chavis - Peach Road - Powell Drive - Pullen Arts Center - Pullen Community Center - Ralph Campbell - Sanderford Road - Sgt. Courtney T. Johnson - Thomas Crowder Woodland Center 	<ul style="list-style-type: none"> - Non-City Owned Sites - Hilburn Academy - Ravenscroft School - Underwood Elementary

Make sure you can login successfully before April 5, 2021

Returning customers:

- Go to parks.raleighnc.gov, select **Register on Reclink**, select **Sign In/Register**, enter your **Username** and **Password**.
- If you do not have an email address associated with your account, contact **Reclink Support, 919-996-2153**, to obtain your **Username** and **Password**.
- Be sure your account information is accurate. If you attempt to create an account and you are notified it is a potential duplicate, you may use the options for retrieving your **Username** and **Password**. You may also contact **RecLink Support** at **919-996-2153**.

New customers:

Go to parks.raleighnc.gov, select **Register on Reclink**, and select **Create an Account**.

When it's time to register

- Be sure you know the location of your camp.
- On your camp registration day(s), **Login to Reclink** by visiting parks.raleighnc.gov and select **Register on Reclink**. Browse and select camps to add to your cart.
- Select **Checkout** to proceed with the registration process. You will receive your receipt via email.

Important tips!

With many people excited to register campers, you may experience slower than usual processing times.

- If you add an item to your cart, leave it in the cart and allow the transaction to be completed.
- Do not close your browser or logout until registration is complete.
- Once registration is complete, please logout of the system.

New customers
Registration Questions
Recreation Business Office
camp.registration@raleighnc.gov
919-996-4800

Reclink Account Information
reclinksupport@raleighnc.gov
919-996-2153

Financial Assistance
Fee.Assistance@raleighnc.gov
919-996-4839

Registration Information

Welcome to Raleigh Parks, Recreation and Cultural Resources Department's 2021 summer camps. All camp offerings are included in this booklet to assist in summer planning. Raleigh Parks, Recreation and Cultural Resources strives to offer diverse, goal-oriented, affordable, and enjoyable opportunities for youth of all ages and abilities. Age eligibility for each camp is determined by age as of August 31, 2021. Please consult each individual camp's description for additional age requirements or limitation information. Please call the camp supervisor for age and program-related questions.



Registration Information

This booklet contains information needed for registration. Please read the following instructions thoroughly before completing your registration.

1. For additional camp information, please call the phone number associated with the camp description in this booklet or use the Summer Camp Location page to find phone numbers.
2. For payment questions, please call 919-996-4800 or email Camp.Registration@raleighnc.gov
3. Any special request must be submitted in writing to camp.registration@raleighnc.gov or Recreation Business Office 2401 Wade Avenue Raleigh, NC 27607 and may delay processing of your registration.
4. Any participant requiring medication to be administered at camp must complete a Permission Form for Assisted Administration of Medication and submit to camp.registration@raleighnc.gov or Recreation Business Office 2401 Wade Avenue Raleigh, NC 27607 prior to the start of camp.
5. Understand that payment is due for all registrations regardless of participation. Withdrawal requests must be received in writing 14 days prior to the start of the program.

Online Registration

Online will begin Monday, April 5, 2021. Online registration will be available at parks.raleighnc.gov.



NO BARCODES NEEDED!

In our new registration system, you will be able to easily search by the name of the camp.

Walk-in Registration

Walk-in registration begins on Monday, April 19, 2021. Registration forms will be online and at the Recreation Business Office. All walk-in registrations will be processed at the Recreation Business Office. Note: Families may choose a payment plan option but an initial payment is required at the time of registration. **Camp choices may be limited.**

Changes to Registration

- Any changes (withdrawal/transfer/additions) to your current registration must be submitted in writing to camp.registration@raleighnc.gov or by fax to 919-996-1741
- Additions or changes to authorized pick-up and release authorization must be submitted in writing to camp.registration@raleighnc.gov or by fax to 919-996-1741.

Refunds

All refund/withdrawal/transfer/credit requests received in writing 14 days or more in advance of the start date of the program/rental/team placement are entitled to: • 100% refund/credit/transfer if the department cancels program or facility rental; • 100% credit or transfer of fees to another program at the time of withdrawal; • 85% refund based on the total cost of program; • 85% credit/transfer/refund of rental eligible fees. Refund/credit/transfer/withdrawal request received less than 14 days prior to the start date of the program/rental/team placement will not be granted. • Refunds for medical reasons requested prior to the start of program/rental/team placement will be granted at 100%; subject to verification. • Outdoor facility usage cancelled due to inclement weather may be rescheduled pending space availability. • A credit may be used by any family member on the same registration account. • Non-attendance/nonparticipation in a program does not entitle a patron to a refund.

Registration Information (continued)



PAYMENT INSTRUCTIONS

Payment options include check or money order (payable to City of Raleigh), American Express, Visa or MasterCard. All registrations submitted after May 15, 2021 must be paid in full. Please do not mail or drop off cash.



FINANCIAL ASSISTANCE

The City of Raleigh Parks, Recreation and Cultural Resources Department strives to provide programs to all. Thanks to generous donations and support, we are able to provide financial assistance to those in need. Financial assistance is provided on a sliding scale based on income and other financial circumstances. All patrons who wish to register for programs provided by the City of Raleigh Parks, Recreation and Cultural Resources Department are eligible to apply for financial assistance. Please note that financial assistance is not available for: specialty camps, organizations, adult teams, special events, trips, or rentals. For more information on eligibility or to request the financial assistance application, please call **919-996-4839** or email **Fee.Assistance@raleighnc.gov**



NON-DISCRIMINATION POLICY

The policy of the City of Raleigh is, and shall be, to oppose any discrimination based on actual or perceived age, mental or physical disability, sex, religion, race, color, sexual orientation, gender identity or expression, familial or marital status, economic status, veteran status, or national origin in any aspect of modern life. A participant alleging discrimination on the basis of any of the aforementioned areas may file a complaint with either the Director of Raleigh Parks, Recreation and Cultural Resources Department or the Office of Equal Opportunity, U.S. Department of the Interior, Washington, D.C. 20240.



Camp Parent Meetings

Camp Parent Meetings are a great place for you to have the opportunity to meet the staff who will be working with your camper this summer and to obtain important information about the camp's operations.

Please plan to attend the parent meeting(s) for your camper's summer camps. If you are unable to attend the meeting, please use the contact information provided with the camp to obtain information that will be shared at the meeting. For a schedule of camp parent meetings, visit parks.raleighnc.gov Keyword search: Camp

MY FUN SUMMER planner



Looking for Registration Forms?

Online registration will not require registration forms. For walk-in registration, forms will be available online and at the Recreation Business Office.

Weeks of Camp	Camp	Location
June 14-17		
June 21-25		
June 28-July 2		
July 6-9		
July 12-16		
July 19-23		
July 26-30		
August 2-6		
August 9-13		
August 16-20	no Xpress camp	
August 23-27	no Xpress camp	

Preschool

**I love the staff of the camp program every year.
My son always loves going!**

— Parent of Summer Camp Participant

Specialty Camps

Adventures at the Park

Age: 4-5 yrs. Does your child love to go to Pullen Park? If they do, then this is the camp for them! Each day of camp we will walk to the park and explore a different aspect of it. We will ride the train, play on the playground, and much more. The children will also learn some fun facts about the park, make arts and crafts, and play games. Please note that the week of June 14-18 is a 4 day camp week and camp will not be held on June 18. Participants should bring a lunch and one snack each day. Participants must be potty trained.

Pullen Community Center

Jun 14-Jun 17 M-Th 9:00am-1:00pm Fee: \$100
Aug 9-Aug 13 M-F 9:00am-1:00pm Fee: \$80

Art Discoveries Jr.

Age: 4-6 yrs. Artists will explore the world of art using mediums such as paints, crayons, clay, recyclables, nature, and other materials. We are excited to watch participants take part in interactive art creations and find a way to turn everyday materials into mini masterpieces. Watch, as imaginations soar and friendships are made, in this fun and creative camp. Every day will be an adventure and something new to put on the shelf! This art exploration may get messy along the way and campers should dress for the mess.

Powell Drive Neighborhood Center

Jul 12-Jul 16 M-F 9:00am-12:00pm Fee: \$90

Art in the Garden

Age: 4-6 yrs. Dig in as we explore bugs, insects and plants! Come along on this week-long camp as we explore life in and around the garden through stories, games, and of course, art! Come dressed for messy fun and bring a snack and water bottle daily. All participants must be potty trained.

Optimist Community Center

Jul 12-Jul 16 M-F 9:00am-12:00pm Fee: \$110

Camp Rock

Age: 4-5 yrs. Does your little one love music, singing, dancing and creating their own tunes? Camp Rock will fulfill every music lover's dream as we create various instruments throughout the week and play

along to popular songs. Campers will also participate in music themed games, activities, food experiences and more in this week-long rocking good time. Mini musicians must be potty trained and will need to bring a snack and water bottle to camp each day.

Greystone Recreation Center

Jun 28-Jul 2 M-F 1:00-4:00pm Fee: \$235

Champ Camp

Age: 4-6 yrs. Champ Camp is designed to introduce fundamental skills in different sports to your champion. Our camp champs will learn about the basic rules and skills of several different sports while focusing on teamwork and sportsmanship in a non-competitive, and fun atmosphere. Sports may include; tennis, soccer, lacrosse, volleyball, basketball, hockey, and more! Sports related crafts and trivia are incorporated to enhance your camper's experience.

Powell Drive Neighborhood Center

Jul 19-Jul 23 M-F 9:00am-12:00pm Fee: \$90
Aug 2-Aug 6 M-F 9:00am-12:00pm Fee: \$90

Creative Ocean Art Exploration

Age: 4-6 yrs. All aboard as we sail the seven seas! Pirates, fish, shells, boats and more! Come along on this week-long camp as we explore life above, around and under the sea through stories, games, and of course, art! Come dressed for messy fun and bring a snack and water bottle daily. Program hours for this camp are from 9:00am -12:00pm and all participants must be potty trained. Due to the camp only being 4 days, camp is prorated.

Optimist Community Center

Jun 14-Jun 17 M-Th 9:00am-12:00pm Fee: \$90

Creepy Crawlers

Age: 4-5 yrs. Our young explorers will uncover and discover more about those that creep, slither, fly and crawl around us. How many bugs and animals hide and live underneath your feet? What benefits do they bring to the environment and to people? We will learn fun facts about insects, bugs, and animals while participating in themed crafts, food experiences and experiments. We may even have a visit from a few live little critters for further investigation; this camp is sure to be a wild adventure. Little explorers must be potty trained and should bring a snack and water bottle each day.

Greystone Recreation Center

Jun 21-Jun 25 M-F 9:00am-12:00pm Fee: \$110
Jul 12-Jul 16 M-F 9:00am-12:00pm Fee: \$110

Doll Days of Summer

Age: 4-5 yrs. Does your little one LOVE dolls and request it to come everywhere with you? If you answered yes, then this camp will be perfect for them. Each day we will share in activities with our doll such as tea parties, feeding, dress up, games, adventures, etc. Children will create treasured projects for his/her dolly such as burp cloths, blankets, rattles, etc. Campers will also enjoy fun activities, food experiences, and socializing with other doll loving friends. Our young campers must be potty trained and should bring a doll, snack and water bottle to camp each day.

Greystone Recreation Center

Aug 2-Aug 6 M-F 1:00-4:00pm Fee: \$110

Ed-ZOO-cation

Age: 4-5 yrs. WHALE hello there, do you love animals? This camp will be a ROARING good time as we learn about animals from all over the world. Explore everything from polar bears to giraffes to yaks and long-horned orb weaver spiders? Campers will not only learn more about popular and strange animals, but will participate in games, crafts, stories, food experiences, and songs...all animal related of course. We may even have a few furry or scaly visitors drop in from the City's Nature program for some hands-on investigation. Come join us for the SEALiest week of fun! Does your little one eat like a BEAR? ALPACA snack! A snack and water bottle is recommended each day; young animal lovers must also be potty trained.

Greystone Recreation Center

Jul 26-Jul 30 M-F 1:00-4:00pm Fee: \$110

Fizz, Muck, Bubbles & Goo

Age: 4-5 yrs. We'll mix up some crazy concoctions using stuff around the house—slime, bubbles, crazy doughs, eat-me art, and more. So get ready for some weird science and messy fun! Campers explore the themes and science in the camp title by doing hands on activities such as art projects, science experiments, games etc. Campers should bring a snack daily and water bottle. Participants must be potty trained.

Glen Eden Pilot Park

Jun 21-Jun 25 M-F 9:00am-12:00pm Fee: \$100

Four Seasons

Age: 4-5 yrs. Participants that attend this camp will get to experience four different seasons in one week. They will be learning about winter, spring, summer, and fall. We will talk about the different activities that can be done during the different seasons. We will also play games and make some fun snacks. Please note that this camp is a 4 day camp, running July 6-9. Camp will not be held on July 5th. Participants should bring a lunch and one snack each day. Participants must be potty trained.

Pullen Community Center

Jul 6-Jul 9 Tu-F 9:00am-1:00pm Fee: \$80

Kaleidosports

Age: 4-6 yrs. Campers try a variety of sports to find the one that's the right fit for them as we introduce a new sport activity each day. We will explore teamwork and cooperation, as well as complete a sports-themed craft each day. Please have your child wear tennis

shoes and socks as we will be running, walking and playing. Participants should also pack a healthy snack and water bottle. Program hours for this camp will be from 9:00am - 12:00pm and will not offer early drop off or late pick up.

Optimist Community Center

Jul 19-Jul 23 M-F 9:00am-12:00pm Fee: \$100

Kick Start to Kindergarten

Age: 4-6 yrs. Children entering kindergarten in 2021 are invited to join us to have fun, meet new friends and get ready for school during the staggered entry week. Campers can practice skills like taking turns, packing up a backpack and sitting in a group circle to listen to a story. We will also keep them entertained with active games and arts & crafts. Participants should bring a lunch, two snacks and a water bottle each day.

Abbotts Creek Community Center

Aug 23-Aug 27 M-F 8:30am-5:30pm Fee: \$140

Marsh Creek Community Center

Aug 23-Aug 27 M-F 8:30am-5:30pm Fee: \$140

Pullen Community Center

Aug 23-Aug 27 M-F 8:30am-5:30pm Fee: \$140

KinderSport

Age: 4-5 yrs. Hit it, catch it, kick it and more! We'll introduce a variety of organized sports such as soccer, T-ball, hockey, basketball and golf. Emphasis is on fun and social interaction while developing hand-eye coordination. Campers will also make some sports-related arts and craft projects. Campers should bring a snack and water bottle daily. Participants must be potty trained.

Glen Eden Pilot Park

Jun 28-Jul 2 M-F 9:00am-12:00pm Fee: \$100

Leaps N Beats

Age: 4-6 yrs. If you love ballet and tap, then you will love this camp! Learn the basics of ballet and tap in a fun environment. Campers will enhance coordination, balance and expression. Dancers will also create dance themed crafts, meet friends, have fun and dance the days away. Little dancers must be potty trained and should bring a water bottle and snack each day!

Greystone Recreation Center

Jun 14-Jun 17 M-Th 9:00am-12:00pm Fee: \$90

Aug 2-Aug 6 M-F 9:00am-12:00pm Fee: \$110

Little Chefs

Age: 4-5 yrs. Calling all little chefs!! Does your child love to experiment in the kitchen, mix ingredients and form it into delicious treats? This camp will be a real culinary adventure as we spark interest in their creative side while also taking part in games, activities, arts & crafts, and of course introducing our pallets to savory, sweet and tasty concoctions! Little chefs must be potty trained and should plan to bring a water bottle and snack each day. Though we will be preparing snacks, some children may not like what we make so snacks are encouraged.

Greystone Recreation Center

Jun 21-Jun 25 M-F 9:00am-12:00pm Fee: \$125

Jul 19-Jul 23 M-F 9:00am-12:00pm Fee: \$125

Preschool Camps continued to page 10—



Preschool Camp continued —

Little Scientist

Age: 4-6 yrs. Are you ready to experiment and explore the world of science? Your future scientist will participate in themed experiments and record observations as we look at a different field of science every day. We will explore different scientific concepts and experiments to help us understand how things work in our world. We will learn about fun and safe reactions through nature and our own creations. Get ready for your scientist to experience this explosion of fun and learning.

Powell Drive Neighborhood Center

Jun 28-Jul 2 M-F 9:00am-12:00pm Fee: \$90

Modern Marvels

Age: 4-5 yrs. In this action-packed Superhero training camp, campers will participate in obstacle courses, leap through rings of "fire", soar over buildings, strike out villains, slip through laser webs and escape the cavern of doom...a typical day in the life of a Superhero. Our little marvels will have the opportunity to design and create their own cape, shield and of course spin out an awesome superhero name to match their super hidden power. Campers will also participate in themed experiments, food experiences, games and other crafts in this exciting week-long adventure. Little heroes must be potty trained and should bring a snack and water bottle each day!

Greystone Recreation Center

Jul 26-Jul 30 M-F 9:00am-12:00pm Fee: \$110

One, Two, Three...Come Read With Me

Age: 4-5 yrs. This camp is all about popular children's books! Each day we will be reading a different book and making a craft that goes along with the book. Participants will also get a chance to act out scenes from the books and even get to dress up like their favorite storybook characters. Participants should bring a lunch and one snack each day. Participants must be potty trained.

Pullen Community Center

Jul 12-Jul 16 M-F 9:00am-1:00pm Fee: \$100

Tea, Top Hats & Tiaras

Age: 4-6 yrs. If your little one loves fairy tales, dress up, and princess/prince costumes then this camp is sure to fulfill his/her Fairy Godmother wishes. Campers will participate in games, activities, arts & crafts, food experiences and more in this dream like setting. These royal hopefuls will develop their etiquette as they sip tea and nibble pastries at a Prince/Princess Tea. Of course no camp fit for a Prince or Princess is complete without a Ball...our royal highnesses will be cordially invited to the Greystone Royal Prince/Princess Ball to conclude camp. Our little royals must be potty trained and should bring a snack and water bottle each day.

Greystone Recreation Center

Jun 28-Jul 2 M-F 9:00am-12:00pm Fee: \$115

The Little PRE-Fessor

Age: 4-5 yrs. Calling all mixers, pourers, and potion makers! If you are enthusiastic about science and experimenting then our Little Pre-Fessor camp is just for you! If your child loves making slime, getting a little messy and seeing if a Volcano will erupt when vinegar is added to baking soda they will have a BLAST learning the basic chemistry that make these reactions take place. Campers will also enjoy games, activities, food experiences, arts & crafts, and more... all science themed of course! Come EXPLODE with fun and excitement surrounded by other science fanatics! Our little scientists must be potty trained and should plan to bring a water bottle and snack to camp each day!

Greystone Recreation Center

Jun 14-Jun 17 M-Th 1:00-4:00pm Fee: \$90

Tot Inventor's Workshop

Age: 4-5 yrs. Childhood curiosity, experimentation and imagination can develop one's play instinct; our Tot Inventor's Workshop will highlight camper's creativity, challenge critical thinking, enhance problem solving, encourage teambuilding and provide opportunities for children to tinker, design and build a variety of gadgets, models, mazes, projects and machines with moveable wheels/ arms. Throughout the camp, participants will learn about physical concepts such as friction, speed, and movement. Campers will also participate in games, activities, food experiences, science experiments, arts & crafts and more. Come join us for a week of innovation, fun and excitement. Little inventor's must be potty trained and should bring a snack and water bottle each day.

Greystone Recreation Center

Jun 21-Jun 25 M-F 1:00-4:00pm Fee: \$110

Aug 9-Aug 13 M-F 1:00-4:00pm Fee: \$110

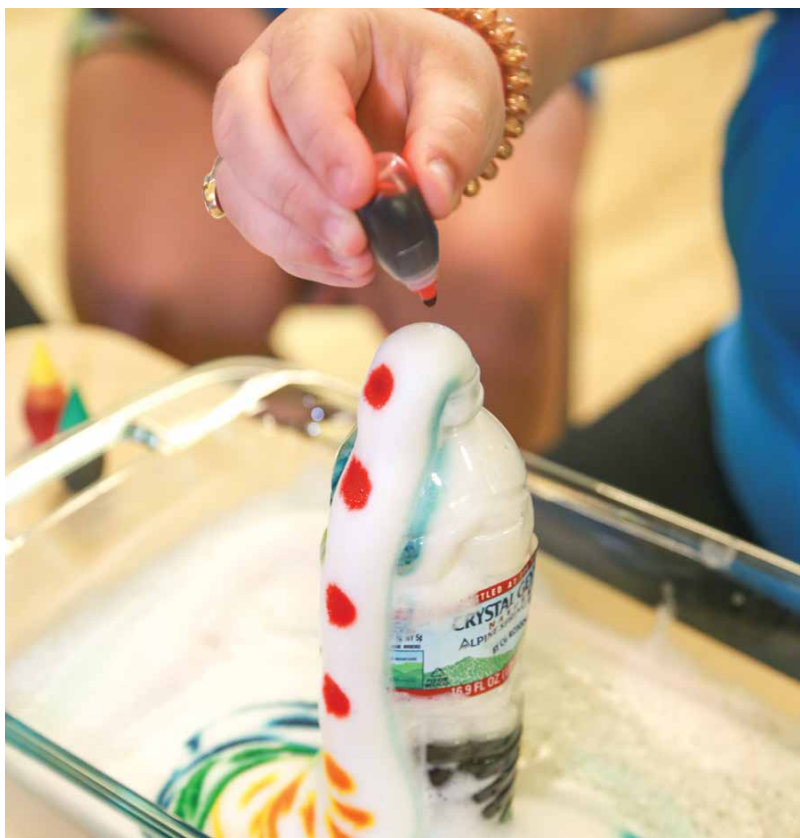
Wheelin' Wonders

Age: 4-5 yrs. Does your little one have a need for SPEED and constantly wonders what makes a car "GO"? In this summer speedology session, racing rebels will have an opportunity to learn, design, build and of course RACE, unleashing their inner "speed demon: dreams. In Wheelin' Wonders, we will incorporate Arts & Crafts, food experiences, experiments and learning through age appropriate hands-on concepts that integrate science, technology and engineering to inspire these mini movers. All speedsters must be potty trained and because Pit Stops are required for refueling, please send a water bottle and snack each day.

Greystone Recreation Center

Jul 12-Jul 16 M-F 1:00-4:00pm Fee: \$110

Aug 9-Aug 13 M-F 9:00am-12:00pm Fee: \$110



Youth

The day camp and counselors were fantastic! My kids both came home happy, tired, and enthusiastic about what they did that day.

— Parent of Summer Camp Participant



Specialty Camps

Art4Fun

Age: 7-11 yrs. Art4Fun is all about celebrating and encouraging creativity in children! The daily camp schedule includes multimedia art projects that encourage creativity and promote the enjoyment of art, balanced with traditional camp activities, including outdoor time. Each week is programmed differently, so you may sign up for one week or multiple weeks. Structured activities are scheduled from 9:00am to 5:00pm. Each week ends with a gallery exhibition of the work the campers have created during the week! Participants should bring a lunch, two snacks and a water bottle each day. There will be no camp on Friday, June 18, in observation of Juneteenth.

Marsh Creek Community Center Fur, Feathers and Fins

Jun 14-Jun 17 M-Th 8:30am-5:30pm Fee: \$160

Art & Nature

Jun 21-Jun 25 M-F 8:30am-5:30pm Fee: \$200

Creature of Nature

Jun 28-Jul 2 M-F 8:30am-5:30pm Fee: \$200

Scraptastic

Jul 6-Jul 9 Tu-F 8:30am-5:30pm Fee: \$160

Pullen Arts Center Under the Sea

Jun 21-Jun 25 M-F 8:30am-5:30pm Fee: \$200

Fairy Tales

Jun 28-Jul 2 M-F 8:30am-5:30pm Fee: \$200

Art and Nature

Jul 12-Jul 16 M-F 8:30am-5:30pm Fee: \$200

Sculpture and 3D

Jul 19-Jul 23 M-F 8:30am-5:30pm Fee: \$200

Small Tiny Mini

Jul 26-Jul 30 M-F 8:30am-5:30am Fee: \$200

Aug 2-Aug 6 M-F 8:30am-5:30pm Fee: \$200

Adventure Stem with LEGO Materials

Age: 5-7 yrs. Bring your craziest ideas to life with Play-Well TEKologies and tens of thousands of LEGO parts! Build engineer-designed projects such as chugging steamboats, enchanting moon bridges and bustling airports. Design and build as never before and explore your craziest ideas. Participants should bring a snack and bottled water. Staff and curriculum provided by Play-Well TEKologies.

Brier Creek Community Center

Jul 12-Jul 16 M-F 9:00am-12:00pm Fee: \$230

Aug 2-Aug 6 M-F 9:00am-12:00pm Fee: \$230

Adventures in Science

Adventures in Science is a unique project-based learning experience that will stimulate your child's natural curiosity. Our activities use the scientific method to promote wonder, discovery and exploration and also encourage problem-solving and critical thinking skills to engage and challenge children to create their own hypotheses. Please bring one snack and a water bottle to camp each day.

Kiwanis Community Center

Ages 5-7

Aug 9-Aug 13 M-F 9:00am-12:00pm Fee: \$100

Ages 8-11

Aug 9-Aug 13 M-F 1:00-4:00pm Fee: \$100

All American Doll Adventures Extended

Age: 6-11 yrs. Join us for our EXTENDED day of fun. Campers will enjoy fun activities and adventures that may include crafts, movies, games, stories, walks in the park and more! Campers will enjoy time with dolls they bring from home. The same crafts and activities are planned for each week camp is offered. Please make sure to bring two snacks and a lunch each day. For the week of June 14-17, this camp is pro-rated. For more information, please contact the staff who manage this camp and they can be reached at Optimist Community Center at 919-996-2880.

Glen Eden Pilot Park

Jun 14-Jun 17 M-Th 9:00am-4:00pm Fee: \$120

Aug 9-Aug 13 M-F 9:00am-4:00pm Fee: \$120

Youth Camps continued to page 12—

All Dolled UP!

Age: 6-8 yrs. Does your child absolutely LOVE dolls, dress up, role playing and having their doll involved in play? If so, this camp is the perfect fit! Each day we will share in activities with our doll such as tea parties, feeding, dress up, games, adventures, etc. Children will create treasured projects for their dolly that may include: beach towels, collage frames, purses, tents, cabanas, accessories... you name it! Campers will also enjoy fun activities, food experiences, and socializing with other doll loving friends. At the end of camp, dolls and participants can come dressed in their finest English fashion and partake in a Tea party at a local tea room, transported by our very own Raleigh Trolley. Campers should bring a doll, snack and water bottle to camp each day.

Greystone Recreation Center

Aug 9-Aug 13 M-F 9:00am-12:00pm Fee: \$115

All-Sports Camp

Age: 7-12 yrs. This camp is perfect for any child that enjoys playing and learning a variety of sports and recreational games. Skills and rules will be taught for many activities including but not limited to the following: soccer, wiffleball, basketball, kickball, flag football, dodgeball, ultimate frisbee and more. Instructional time is 9:30am-1:00pm. Early drop off time is 9:15am and all campers must be picked up by 1:30pm. Participants should bring a snack, bottled water and prepared to be involved in outdoor activities throughout the day

Brier Creek Community Center

Jun 21-Jun 25	M-F	9:30am-1:00pm	Fee: \$150
Jun 28-Jul 2	M-F	9:30am-1:00pm	Fee: \$150
Jul 19-Jul 23	M-F	9:30am-1:00pm	Fee: \$150
Aug 9-Aug 13	M-F	9:30am-1:00pm	Fee: \$150

Art in Motion

Age: 7-10 yrs. Jump into our art in motion adventures as we focus on the process of our art achievements not the outcome. Your artist will be introduced to clay sculpting, utilizing recycled canvases to create out of the box masterpieces, tinker with woodwork, get messy with action art and focus on many other mediums to create different and exciting projects that will help their minds wander and their creativity soar!

Powell Drive Neighborhood Center

Jul 12-Jul 16 M-F 1:30-4:30pm Fee: \$90

Art Time Machine

Age: 6-11 yrs. Travel back in time on an adventure of hands-on art history as we explore the works of artists like Vincent Van Gogh, Henri Matisse, Andy Warhol and Jasper Jones. In this week-long camp, we will work in acrylics, watercolor, and pastels, following the timeline of art from old world masters to modern artists from today. We will apply the lessons that each artist brought to the world in our paintings, collages and maybe even sculptures. The fun will get messy, so make sure you are dressed for it. This camp may include an off-site field trip. Participants should bring a lunch and two snacks each day.

Kiwanis Community Center

Jul 19-Jul 23 M-F 9:00am-4:00pm Fee: \$150

ArtVentures Camp

Discover your inner artist through painting, drawing, sculpting and so much more! Have a blast creating amazing multi-media art. Please pack one snack and a water bottle daily.

Kiwanis Community Center

Ages 5-7

Jun 28-Jul 2 M-F 9:00am-12:00pm Fee: \$100

Ages 8-11

Jun 28-Jul 2 M-F 1:00-4:00pm Fee: \$100

Baseball Camp

Age: 7-10 yrs. This is a developmental camp that will allow players to develop and sharpen their baseball skills and fundamentals during a week of drills, games and instruction. Our instructors will provide knowledgeable instruction on pitching, catching, fielding, hitting, base running and conditioning. Campers will work in small groups during drills and finish the week with a scrimmage. Each camper should come dressed to play in proper baseball attire (T-shirt, baseball pants, glove, hat and cleats) and should also bring a snack and water. Please also bring indoor sneakers and clothes in case of inclement weather.

Kiwanis Community Center

Jul 12-Jul 16 M-F 9:00am-12:30pm Fee: \$100

Basketball Achievements

Age: 8-11 yrs. Camper will learn components of team sports and positive competition in a fun environment. Confidence will be improved by learning basketball fundamentals: shooting, passing, dribbling, defensive drills and conditioning. Structured activities will take place from 9:00am to 4:30pm. Early drop off begins at 8:30am, latest pick up is 6:00pm. Participants should bring a lunch, water bottle and two snacks each day.

Carolina Pines Community Center

Jul 19-Jul 23 M-F 8:30am-6:00pm Fee: \$115





NO BARCODES NEEDED!

In our new registration system, you will be able to easily search by the name of the camp.

Blackbeard's Revenge Pirate's Adventure!

Age: 6-11 yrs. Shiver me timbers as we explore the popular culture behind the life of North Carolina's most famous pirate! Using LEGO Bricks and Technic elements you will build working models to recreate the world of the pirates from the Outer Banks and beyond! The camp experience will include crafts and games as well as our own treasure hunt!

Glen Eden Pilot Park

Jul 12-Jul 16 M-F 9:00am-12:00pm Fee: \$195

Bump, Set, Spike It Up Volleyball Camp

Age: 8-12 yrs. Serve, dig and rotate the fun in this all-day camp for developing volleyball skills and conditioning. This camp is for beginner-to-intermediate players to work on the skills and techniques needed to develop and improve their game. The sport of volleyball, individual and team play will be the focus of this camp. Participants should bring a lunch, 2 snacks and a water bottle each day. Program hours for this camp be from 9:00am - 4:00pm and will not offer an early drop off or late pick up option

Optimist Community Center

Jun 21-Jun 25 M-F 9:00am-4:00pm Fee: \$140
Aug 16-Aug 20 M-F 9:00am-4:00pm Fee: \$140

Camp Compass

Calling ALL OUTDOOR ENTHUSIASTS! Come discover the great outdoors in the company of exceptional leaders and newfound friends! We will be teaching campers outdoor living and wilderness skills. Campers will participate in several of the following activities: learning how to setup a campsite, the basics of wilderness safety, backpacking, arts and crafts and games. This camp is outdoor activity based therefore the campers should be prepared to spend the majority of the day outside. Campers should bring a snack and a water bottle daily.

Glen Eden Pilot Park

Ages 7-9

Jun 21-Jun 25 M-F 1:00-5:00pm Fee: \$125

Ages 7-9

Jul 19-Jul 23 M-F 1:00-5:00pm Fee: \$125

Ages 10-11

Jun 28-Jul 2 M-F 1:00-5:00pm Fee: \$125

Ages 10-11

Jul 26-Jul 30 M-F 1:00-5:00pm Fee: \$125

Ages 12-14

Jul 12-Jul 16 M-F 1:00-5:00pm Fee: \$125

Ages 12-14

Aug 2-Aug 6 M-F 1:00-5:00pm Fee: \$125

Camp Exploration

Age: 6-12 yrs. Campers, join your friends this summer for a fun-filled time which will include sports, games, arts and crafts, special events and so much more! Participants will enjoy time playing with their friends and staff while developing new skills and abilities. Participants should bring a lunch, water bottle and two snacks daily. Please note that there is no camp on 6/18.

Kiwanis Community Center

Jun 14-Jun 17 M-Th 7:30am-6:00pm Fee: \$160
Aug 16-Aug 20 M-F 7:30am-6:00pm Fee: \$200

Craftin' Craze

Age: 8-11 yrs. Come join us for the most creative camp experience as we spend the week focused on a variety of crafts including painting, clay, wooden projects, die cut vinyl design, etc. It will be a week filled with a variety of projects that will allow campers the opportunity to express themselves through artistic design. If you would like to dabble with different mediums and brush up on your artistic skills, then come join us for a week of crafting craze! Participants will need to bring a snack and water bottle to camp each day.

Greystone Recreation Center

Aug 9-Aug 13 M-F 1:00-4:00pm Fee: \$120

Dance Camp

Age: 6-11 yrs. Campers will be exploring various styles of dance, specifically ballet, tap & jazz. This camp will focus on teaching the basic steps & techniques associated with these dances. They will also be introduced to some examples of show management, such as stage presence, stage hair & make-up, art design and more as they prepare for an end of the camp week performance. Participants will also enjoy games, outdoor play and crafts. During the camp, the dancers may work in groups so various levels & ages are welcome. No dance experience required. Participants should bring a lunch and 2 snacks each day. Appropriate shoes for various dance styles such as sneakers, ballet, tap, and/or regular shoes with your dancer's name labeled are preferred but not required. Dancers are welcome to wear dance attire and/or regular clothes. The program hours for this camp are 9:00am-3:00pm, and will not offer an early drop-off or late pick-up option. The week of July 6-9 the price is pro-rated due to the camp only being 4 days

Glen Eden Pilot Park

Jul 6-Jul 9 Tu-F 9:00am-3:00pm Fee: \$115
Aug 16-Aug 20 M-F 9:00am-3:00pm Fee: \$140

DIGI- Advance Minecraft: Command Block

Age: 10-12 yrs. Get ready to wire up your Minecraft worlds with command blocks and Redstone! Even if you're a seasoned Minecraft pro, there's plenty for you to learn. From basic traps to powered machines, Redstone offers Minecraft players a whole new range of opportunities to create amazing things. Minecraft's command block is a pseudo-programming language that consists of logic and execution written in text. We'll learn to spawn creatures, teleport all over your world, and make multiplayer games. Curriculum and instructional staff are provided by Tech Academy. Camp begins at 7:30am and ends at 6:00pm. Digital lesson is from 1:00pm-4:00pm daily. Campers will engage in dynamic and exciting programming when not in the digital lesson such as active & passive games, arts & crafts, science activities and much more. Participants should bring a water bottle, lunch and 2 snacks each day.

Ravenscroft School

Jul 6-Jul 9 Tu-F 7:30am-6:00pm Fee: \$200

DIGI- Crazy Action Contraptions

Age: 10-12 yrs. Unleash your imagination as you journey through the wide-ranging world of LEGO building. This fun, hands-on class shows students how engineering can be fun and silly yet still educational. Students will then be challenged to improve the model and customize their creations. Possible models include the Never-Look-Back Machine, Skittletops, Trapdoor Cable Car Parachute Machine, Rubberband Racer, Balloon-Powered Car, and other Crazy Action Contraptions. Curriculum and instructional staff are provided by Tech Academy. Camp begins at 7:30am and ends at 6:00pm. Digital lesson is from 1:00pm-4:00pm daily. Campers will engage in dynamic and exciting programming when not in the digital lesson such as active & passive games, arts & crafts, science activities and much more. Participants should bring a water bottle, lunch and 2 snacks each day.

Ravenscroft School

Jun 14-Jun 17 M-Th 7:30am-6:00pm Fee: \$200

Youth Camps continued to page 14—

DIGI- EV3 Battlebots

Age: 10-12 yrs. Combining the versatility of the LEGO building system and the Mindstorms EV3 (the most sophisticated microcomputer brick ever made by LEGO), this camp will energize and excite students. Students will construct fun LEGO models, experiment with programs, and compete in robotic challenges. Final challenges will be centered around hitting targets and a sumo battle. Curriculum and instructional staff are provided by Tech Academy. Camp begins at 7:30am and ends at 6:00pm. Digital lesson is from 9:00am-12:00pm daily. Campers will engage in dynamic and exciting programming when not in the digital lesson such as active & passive games, arts & crafts, science activities and much more. Participants should bring a water bottle, lunch and 2 snacks each day.

Ravenscroft School

Jul 6-Jul 9	Tu-F	7:30am-6:00pm	Fee: \$200
Aug 2-Aug 6	M-F	7:30am-6:00pm	Fee: \$250

DIGI- EV3 Robo-Sports

Age: 10-12 yrs. Design build and program robots to take your engineering skills to a higher level. Using the EV3 Intelligent brick from LEGO, servo motors, advanced ultrasonic, touch and light sensors, and specialized Lego technic engineering components, students will build extreme robots, program them to accomplish tasks, respond to external stimuli, and overcome challenges. Possible robots built are a Robotic Arm, Baseball batter, Pitching Machine, Mini-Golf Swinger, a Flipping Gymnast, and a Ball Hunter. Curriculum and instructional staff are provided by Tech Academy. Camp begins at 7:30am and ends at 6:00pm. Digital lesson is from 1:00pm-4:00pm daily. Campers will engage in dynamic and exciting programming when not in the digital lesson such as active & passive games, arts & crafts, science activities and much more. Participants should bring a water bottle, lunch and 2 snacks each day.

Ravenscroft School

Jul 26-Jul 30	M-F	7:30am-6:00pm	Fee: \$250
---------------	-----	---------------	------------

DIGI- EV3 Robo-Wars

Age: 10-12 yrs. Students will combine Mindstorms EV3 with the LEGO building system to bring robots to life! Build robotic machines and droids inspired by designs made in the Battlebot TV show. Final challenges include robot showdowns and challenges in the ring. Curriculum and instructional staff are provided by Tech Academy. Camp begins at 7:30 am and ends at 6:00 pm. Digital lesson is from 9:00am-12:00pm daily. Campers will engage in dynamic and exciting programming when not in the digital lesson such as active & passive games, arts & crafts, science activities and much more. Participants should bring a water bottle, lunch and 2 snacks each day.

Ravenscroft School

Jul 19-Jul 23	M-F	7:30am-6:00pm	Fee: \$250
---------------	-----	---------------	------------

DIGI- Extreme Coding AI & AR

Age: 10-12 yrs. Dive into more advanced computer science topics that include artificial intelligence and augmented reality coding. Computers are getting smarter every day due to advances in machine learning algorithms. Coders can teach computers to recognize faces, play games, and find patterns. In our class, we will create a chatbot, Rock, Paper, Scissors game. We'll then expand our knowledge and code an augmented reality game. Curriculum and instructional staff are provided by Tech Academy. Camp begins at 7:30am and ends at 6:00pm. Digital lesson is from 9:00am-12:00pm daily. Campers will engage in dynamic and exciting programming when not in the digital lesson such as active & passive games, arts & crafts, science activities and much more. Participants should bring a water bottle, lunch and 2 snacks each day.

Ravenscroft School

Jun 14-Jun 17	M-Th	7:30am-6:00pm	Fee: \$200
---------------	------	---------------	------------

DIGI- Extreme EV3 Robotic Engineering

Age: 10-12 yrs. Combining the versatility of the LEGO building system with the most advanced technology LEGO has ever developed, unleash the creative powers of the new LEGO MINDSTORMS EV3 set to create and command robots that walk, talk, think, and do anything you can imagine. We will teach students math, engineering, and robotics concepts by working through step-by-step building projects and example programs to create these amazing robots. Curriculum and instructional staff are provided by Tech Academy. Camp begins at 7:30am and ends at 6:00pm. Digital lesson is from 9:00am-12:00pm daily. Campers will engage in dynamic and exciting programming when not in the digital lesson such as active & passive games, arts & crafts, science activities and much more. Participants should bring a water bottle, lunch and 2 snacks each day.

Ravenscroft School

Jul 12-Jul 16	M-F	7:30am-6:00pm	Fee: \$250
---------------	-----	---------------	------------

DIGI- Game Coding: Super Mario

Age: 10-12 yrs. New Class! This course will give you hands-on experience developing your own game using Scratch 3, a visual coding platform. Students will learn how to think like programmers and learn coding concepts while creating a 2-dimensional, arcade-style Super Mario Bros.-themed game. The first part of the class will be instructor-led; with the time remaining, students will have the opportunity to customize their games. Games created in class will be available online, or students can bring in a USB drive for immediate access. Curriculum and instructional staff are provided by Tech Academy. Camp begins at 7:30am and ends at 6:00pm. Digital lesson is from 9:00am-12:00pm daily. Campers will engage in dynamic and exciting programming when not in the digital lesson such as active & passive games, arts & crafts, science activities and much more. Participants should bring a water bottle, lunch and 2 snacks each day.

Ravenscroft School

Jun 28-Jul 2	M-F	7:30am-6:00pm	Fee: \$250
--------------	-----	---------------	------------

DIGI- Hacking Java Games

Age: 10-12 yrs. Hack into the code of classic games! Students will learn Java coding skills while modifying games such as Asteroids, Tetris, Snake, and more! Coding beginners and more experienced students will love this class. This class requires basic keyboarding skills; bringing a flash drive to save code is recommended. Curriculum and instructional staff are provided by Tech Academy. Camp begins at 7:30am and ends at 6:00pm. Digital lesson is from 9:00am-12:00pm daily. Campers will engage in dynamic and exciting programming when not in the digital lesson such as active & passive games, arts & crafts, science activities and much more. Participants should bring a water bottle, lunch and 2 snacks each day.

Ravenscroft School

Jul 26-Jul 30	M-F	7:30am-6:00pm	Fee: \$250
---------------	-----	---------------	------------

DIGI- Hogwarts Magical Engineering & Robotics

Age: 6-9 yrs. Journey to the magical world of Harry Potter. Build and program magical theme projects. Young imaginations soar! Students will be taught foundational building and introduced to programming concepts with learning about sensors, motors, and special technics components using the Lego Wedo Systems. Possible projects include: Magic Chest, Dragon, Hippogriff, Magic Hat, Magic Carpet, and magical staircase. Curriculum and instructional staff are provided by Tech Academy. Camp begins at 7:30am and ends at 6:00pm. Digital lesson is from 1:00pm-4:00pm daily. Campers will engage in dynamic and exciting programming when not in the digital lesson such as active & passive games, arts & crafts, science activities and much more. Participants should bring a water bottle, lunch and 2 snacks each day.

Ravenscroft School

Aug 2-Aug 6	M-F	7:30am-6:00pm	Fee: \$250
-------------	-----	---------------	------------

DIGI- Intro to Coding with Superheroes

Age: 6-9 yrs. Love video games? Create YOUR OWN VIDEO GAME! Choose your storyline with favorite superheroes as your stars. Add challenges and levels of difficulty, then share them by email or post them on the web to challenge family and friends. The game will be in an animated Flash format, viewable in most internet browsers. Bring a jump drive to the last day of class, or files can be emailed to parents. Curriculum and instructional staff are provided by Tech Academy. Camp begins at 7:30am and ends at 6:00pm. Digital lesson is from 9:00am-12:00pm daily. Campers will engage in dynamic and exciting programming when not in the digital lesson such as active & passive games, arts & crafts, science activities and much more. Participants should bring a water bottle, lunch and 2 snacks each day.

Ravenscroft School

Jul 19-Jul 23	M-F	7:30am-6:00pm	Fee: \$250
---------------	-----	---------------	------------

DIGI- Intro to Game Coding

Age: 6-9 yrs. Learn to create an interactive 2D video game using your FAVORITE characters. Choose characters from Undertale, Pokemon, Nintendo, Minecraft, and even classic characters like Donkey Kong, Pac Man, Sonic, and Mario! In the first class, we will learn to use Scratch, and in the final session, students will be walked through creating a maze game and picking which main character to use. Bring a USB drive to save your games on the last day, or they can be emailed to parents. Curriculum and instructional staff are provided by Tech Academy. Camp begins at 7:30am and ends at 6:00pm. Digital lesson is from 1:00pm-4:00pm daily. Campers will engage in dynamic and exciting programming when not in the digital lesson such as active & passive games, arts & crafts, science activities and much more. Participants should bring a water bottle, lunch and 2 snacks each day.

Ravenscroft School

Jul 6-Jul 9 Tu-F 7:30am-6:00pm Fee: \$200

DIGI- Intro to Video Game Design with Nintendo

Age: 6-9 yrs. Love video games? Create YOUR OWN VIDEO GAME! Choose your storyline with popular Nintendo characters as your stars then add challenges and levels of difficulty. Campers can practice math, logic, and programming and put their video game talents to work! Share your game by email or post it on the web to challenge family and friends. Game will be in an animated Flash format, viewable in most internet browsers. Curriculum and instructional staff are provided by Tech Academy. Camp begins at 7:30am and ends at 6:00pm. Digital lesson is from 9:00am-12:00pm daily. Campers will engage in dynamic and exciting programming when not in the digital lesson such as active & passive games, arts & crafts, science activities and much more. Participants should bring a water bottle, lunch and 2 snacks each day.

Ravenscroft School

Jun 21-Jun 25 M-F 7:30am-6:00pm Fee: \$250

DIGI- Junior Engineering: Theme Park

Age: 6-9 yrs. Have a blast using LEGO Technics Engineering Kits to explore the world of science, technology, engineering, and mathematics. During each session, we will be exploring new engineering principles such as gears, wheels, levers, and pulleys. Then we will build working theme park rides and machines that reinforce concepts learned. After each building project, students will customize, share, compete in challenges and enjoy experimenting with their creations. Possible models include Catapult Games, Crazy Floors, Merry-Go-Rounds, Go-Karts, Moving Clowns, Popcorn Carts, and more. Curriculum and instructional staff are provided by Tech Academy. Camp begins at 7:30am and ends at 6:00pm. Digital lesson is from 1:00pm-4:00pm daily. Campers will engage in dynamic and exciting programming when not in the digital lesson such as active & passive

games, arts & crafts, science activities and much more. Participants should bring a water bottle, lunch and 2 snacks each day.

Ravenscroft School

Jun 28-Jul 2 M-F 7:30am-6:00pm Fee: \$250

DIGI- Minecraft Game Designer: Dungeon Sr

Age: 10-12 yrs. Don't just play Minecraft! Turn Minecraft from a game into a visual learning tool! This class will reinforce problem-solving skills and spatial cognition through learning to create in-game dungeons and treasure maps. This class has a strong emphasis on creativity, exploration, and cooperative learning experiences. While immersed in the fun and creative world of Minecraft, students will learn about concepts in programming and game design. Curriculum and instructional staff are provided by Tech Academy. Camp begins at 7:30am and ends at 6:00pm. Digital lesson is from 1:00pm-4:00pm daily. Campers will engage in dynamic and exciting programming when not in the digital lesson such as active & passive games, arts & crafts, science activities and much more. Participants should bring a water bottle, lunch and 2 snacks each day.

Ravenscroft School

Aug 2-Aug 6 M-F 7:30am-6:00pm Fee: \$250

DIGI- Minecraft Game Designer: Dungeons Jr.

Age: 6-9 yrs. Don't just play Minecraft! Turn Minecraft from a game into a visual learning tool! This class will reinforce problem-solving skills and spatial cognition through learning to create in-game dungeons and treasure maps. This class has a strong emphasis on creativity, exploration, and cooperative learning experiences. While immersed in the fun and creative world of Minecraft, students will learn about concepts in programming and game design. Curriculum and instructional staff are provided by Tech Academy. Camp begins at 7:30am and ends at 6:00pm. Digital lesson is from 9:00am-12:00pm daily. Campers will engage in dynamic and exciting programming when not in the digital lesson such as active & passive games, arts & crafts, science activities and much more. Participants should bring a water bottle, lunch and 2 snacks each day.

Ravenscroft School

Jun 28-Jul 2 M-F 7:30am-6:00pm Fee: \$250

DIGI- Multiplayer Minecraft: City Builder Jr.

Age: 6-9 yrs. Minecraft is a sandbox building game that's been dominating the world of video gaming for the past several years. Collaborate with fellow students to construct a city! Students will take home their completed world files at the end of class. Beginners and experienced Minecrafters alike will love this action-packed camp! Curriculum and instructional staff are provided by Tech Academy. Camp begins at 7:30am and ends at 6:00pm. Digital lesson is from 9:00am-12:00pm daily. Campers will engage

in dynamic and exciting programming when not in the digital lesson such as active & passive games, arts & crafts, science activities and much more. Participants should bring a water bottle, lunch and 2 snacks each day.

Ravenscroft School

Jun 14-Jun 17 M-Th 7:30am-6:00pm Fee: \$200

DIGI- Multiplayer Minecraft: Colosseum Builder

Age: 10-12 yrs. Become the architect of three mini-game battle arenas! Build your own spleef arena, capture the flag base, and king of the hill stadium, then challenge your friends! Battle it out in spleef, plan your base in capture the flag, and have a snowball fight in king of the hill! Students will get a copy of the world map to take home and expand on. We will be using the PC/Java Edition of Minecraft. Curriculum and instructional staff are provided by Tech Academy. Camp begins at 7:30am and ends at 6:00pm. Digital lesson is from 1:00pm-4:00pm daily. Campers will engage in dynamic and exciting programming when not in the digital lesson such as active & passive games, arts & crafts, science activities and much more. Participants should bring a water bottle, lunch and 2 snacks each day.

Ravenscroft School

Jul 19-Jul 23 M-F 7:30am-6:00pm Fee: \$250

DIGI- Multiplayer Minecraft: Mini Game Builder

Age: 10-12 yrs. Become the architect of three mini-game battle arenas! Build your own spleef arena, capture the flag base, and king of the hill stadium, then challenge your friends! Battle it out in spleef, plan your base in capture the flag, and have a snowball fight in king of the hill! Students will get a copy of the world map to take home and expand on. We will be using the PC/Java Edition of Minecraft. Curriculum and instructional staff are provided by Tech Academy. Camp begins at 7:30am and ends at 6:00pm. Digital lesson is from 1:00pm-4:00pm daily. Campers will engage in dynamic and exciting programming when not in the digital lesson such as active & passive games, arts & crafts, science activities and much more. Participants should bring a water bottle, lunch and 2 snacks each day.

Ravenscroft School

Jun 21-Jun 25 M-F 7:30am-6:00pm Fee: \$250

Youth Summer Camps continued to page 16—

DIGI- Multiplayer Minecraft: Theme Park Builder

Age: 6-9 yrs. New Class! Work as a team to create a custom theme park in Minecraft. Use command blocks and Redstone to create this world! Possible projects include roller coasters, water rides, trampoline park, obstacle course, a boat race, bumper boats, a dunk tank, and many more rides and attractions! Students will get a copy of the world map to take home and expand on. We will be using the PC/Java Edition of Minecraft. Curriculum and instructional staff are provided by Tech Academy. Camp begins at 7:30am and ends at 6:00pm. Digital lesson is from 9:00am-12:00pm daily. Campers will engage in dynamic and exciting programming when not in the digital lesson such as active & passive games, arts & crafts, science activities and much more. Participants should bring a water bottle, lunch and 2 snacks each day.

Ravenscroft School

Jul 26-Jul 30 M-F 7:30am-6:00pm Fee: \$250

DIGI- Multiplayer Minecraft: World Builder

Age: 6-9 yrs. New Class! Unleash your creativity as you work collaboratively! Create a world with others in four unique, themed quadrants. Build different biomes or base a section on your favorite movie or video game! Meld your quadrants together with bridges, and separate them with moats of water, lava, or even the void! Students will get a copy of the world map to take home and expand on. We will be using the PC/Java Edition of Minecraft. Curriculum and instructional staff are provided by Tech Academy. Camp begins at 7:30am and ends at 6:00pm. Digital lesson is from 9:00am-12:00pm daily. Campers will engage in dynamic and exciting programming when not in the digital lesson such as active & passive games, arts & crafts, science activities and much more. Participants should bring a water bottle, lunch and 2 snacks each day.

Ravenscroft School

Jul 12-Jul 16 M-F 7:30am-6:00pm Fee: \$250

DIGI- Python Coding

Age: 10-12 yrs. Get a great head start in learning how to code using one of the key programming languages used by professional developers - Python. Its syntax allows programmers to express concepts in fewer lines of code than would be possible in languages such as C++ or Java, making it the perfect coding language for beginners. Python is a text-based language; students should have familiarity with keyboarding and basic computer skills. Curriculum and instructional staff are provided by Tech Academy. Camp begins at 7:30am and ends at 6:00pm. Digital lesson is from 1:00-4:00pm daily. Campers will engage in dynamic and exciting programming when not

in the digital lesson such as active & passive games, arts & crafts, science activities and much more. Participants should bring a water bottle, lunch and 2 snacks each day.

Ravenscroft School

Jul 12-Jul 16 M-F 7:30am-6:00pm Fee: \$250

DIGI- Robotic Builders: Battlebots

Age: 6-9 yrs. Let the battles begin! Designed by the experts at MIT, LEGO WeDo Robotics' unique system teaches students about simple machines, engineering, programming, and so much more. In this camp, students may construct a Catapult, Ninja Star, Tank, Battle Axe, Crossbow, and more! Curriculum and instructional staff are provided by Tech Academy. Camp begins at 7:30am and ends at 6:00pm. Digital lesson is from 1:00-4:00pm daily. Campers will engage in dynamic and exciting programming when not in the digital lesson such as active & passive games, arts & crafts, science activities and much more. Participants should bring a water bottle, lunch and 2 snacks each day.

Ravenscroft School

Jul 12-Jul 16 M-F 7:30am-6:00pm Fee: \$250

DIGI- Robotic Builders: Marine Explorers

Age: 6-9 yrs. Designed by the experts at MIT, this unique system teaches children about simple machines, engineering, programming, and so much more. The LEGO Education WeDo Robotics Builder class allows students to explore different concepts in robotics. Possible models may include Scuba Driver, Clown Fish, Bathyscope, Sea Gulls, Submarine and more. Your students will build LEGO models featuring working motors, tilt sensors, motion detectors, and a LEGO USB Robotics Hub. Curriculum and instructional staff are provided by Tech Academy. Camp begins at 7:30am and ends at 6:00pm. Digital lesson is from 1:00-4:00pm daily. Campers will engage in dynamic and exciting programming when not in the digital lesson such as active & passive games, arts & crafts, science activities and much more. Participants should bring a water bottle, lunch and 2 snacks each day.

Ravenscroft School

Jul 19-Jul 23 M-F 7:30am-6:00pm Fee: \$250

DIGI- Robotic Builders: Mighty Machines

Age: 6-9 yrs. Yes, We CAN learn about Robotics! With the LEGO WeDo Robotics System, young children can build and program their robotic creations. Young imaginations soar! The LEGO Education WeDo Robotics Builder, allows students to explore different Robotic Themes. Students will work with simple machines, program models they design and create, measure time and distance, write, and much more! Curriculum and instructional staff are provided by Tech Academy. Camp begins at 7:30am and ends at 6:00pm. Digital lesson

is from 1:00 -4:00pm daily. Campers will engage in dynamic and exciting programming when not in the digital lesson such as active & passive games, arts & crafts, science activities and much more. Participants should bring a water bottle, lunch and 2 snacks each day.

Ravenscroft School

Jul 26-Jul 30 M-F 7:30am-6:00pm Fee: \$250

DIGI- Star Wars Game Coding

Age: 6-9 yrs. Don't Just PLAY games. CREATE them! All new games and characters! Create and learn to modify our Star Wars-themed games using Scratch. Scratch is programming language, developed by MIT that makes it easy create interactive art, stories, simulations and 2D arcade-styled games. Students will be walked through step-by-step tutorials to create 2-4 working games and animations using popular Star Wars sprites. With time remaining, they will be challenged to modify or improve the games created in class. Bring a USB drive on the last day or games can be emailed to parents. Scratch is free program available online for both Mac and PC. Curriculum and instructional staff are provided by Tech Academy. Camp begins at 7:30am and ends at 6:00pm. Digital lesson is from 9:00am-12:00pm daily. Campers will engage in dynamic and exciting programming when not in the digital lesson such as active & passive games, arts & crafts, science activities and much more. Participants should bring a water bottle, lunch and 2 snacks each day.

Ravenscroft School

Aug 2-Aug 6 M-F 7:30am-6:00pm Fee: \$250

DIGI- Star Wars Robotic Builders Jr.

Age: 6-9 yrs. Designed by the experts at MIT, this unique system teaches students about simple machines, engineering, programming, and so much more. Students will create Star Wars and space-inspired robots. This course builds knowledge of simple machines, engineering, programming in an environment full of galactic fun! Your students will build LEGO models featuring motors, tilt sensors, motion detectors, and a USB Robotics Hub. Models include AT-ST Biped, Spinning Tie Fighter, Cannons, and other out-of-this-world models. Curriculum and instructional staff are provided by Tech Academy. Camp begins at 7:30am and ends at 6:00pm. Digital lesson is from 9:00am-12:00pm daily. Campers will engage in dynamic and exciting programming when not in the digital lesson such as active & passive games, arts & crafts, science activities and much more. Participants should bring a water bottle, lunch and 2 snacks each day.

Ravenscroft School

Jul 6-Jul 9 Tu-F 7:30am-6:00pm Fee: \$200

DIGI- WeDo Robotic Engineering

Age: 6-9 yrs. Make science come to life! Powered by the LEGO WeDo systems and software, students will explore the exciting world of robotics! Learn programming skills, engineering concepts, and the names of robot components. Your students will build LEGO models featuring working motors, tilt sensors, motion detectors, and a LEGO USB Robotics Hub. Curriculum and instructional staff are provided by Tech Academy. Camp begins at 7:30am and ends at 6:00pm. Digital lesson is from 1:00-4:00pm daily. Campers will engage in dynamic and exciting programming when not in the digital lesson such as active & passive games, arts & crafts, science activities and much more. Participants should bring a water bottle, lunch and 2 snacks each day.

Ravenscroft School

Jun 14-Jun 17 M-Th 7:30am-6:00pm Fee: \$200

DIGI-Robotic Builders: Gamer-Bots

Age: 10-12 yrs. Let the Games begin! Designed by the experts at M.I.T., LEGO WeDo Robotics' unique system teaches students about simple machines, engineering, programming, and so much more. Students will be taught foundational building and introduced to programming concepts with learning about the Sensors, Motors, and Special Technics components. Students will build and program smart robots based on popular games: Angry Birds, Chutes and Ladder, Hockey, Just Dance, Pinball, Duck Hunt and more! Curriculum and instructional staff are provided by Tech Academy. Camp begins at 7:30am and ends at 6:00pm. Digital lesson is from 9:00am-12:00pm daily. Campers will engage in dynamic and exciting programming when not in the digital lesson such as active & passive games, arts & crafts, science activities and much more. Participants should bring a water bottle, lunch and 2 snacks each day.

Ravenscroft School

Jun 21-Jun 25 M-F 7:30am-6:00pm Fee: \$250

DIGI-Star Wars Robotic Builders

Age: 10-12 yrs. Designed by the experts at MIT, this unique system teaches students about simple machines, engineering, programming, and so much more. Students will create Star Wars and space-inspired robots. This course builds knowledge of simple machines, engineering, programming in an environment full of galactic fun! Your students will build LEGO models featuring motors, tilt sensors, motion detectors, and a USB Robotics Hub. Models include AT-ST Biped, Spinning Tie Fighter, Cannons, and other out-of-this-world models. Curriculum and instructional staff are provided by Tech Academy. Camp begins at 7:30am and ends at 6:00pm. Digital lesson is from

1:00-4:00pm daily. Campers will engage in dynamic and exciting programming when not in the digital lesson such as active & passive games, arts & crafts, science activities and much more. Participants should bring a water bottle, lunch and 2 snacks each day.

Ravenscroft School

Jun 28-Jul 2 M-F 7:30am-6:00pm Fee: \$250

Edible Engineering

Age: 6-8 yrs. Does your child love to experiment in the kitchen, mix ingredients and form it into delicious delicacies? Campers will have the opportunity to mix, blend, and stir up snacks and even participate in real food prep at local restaurants where children will create a personalized treat. This camp will be a real culinary adventure as we spark interest in their creative side while also taking part in games, activities, arts & crafts, and of course introducing our pallets to savory, sweet and tasty concoctions! Campers should bring snack and a water bottle each day to camp.

Greystone Recreation Center

Jun 28-Jul 2 M-F 9:00am-12:00pm Fee: \$120
Aug 2-Aug 6 M-F 9:00am-12:00pm Fee: \$120

F.A.S.T. Camp

Age: 7-14 yrs. Run faster, jump higher and throw harder than you ever have before! The camp activities will include basic fitness drills; drills to improve gross motor skills, agility, balance, and strength; plyometric drills; sports fundamental drills; and fitness games. Participants will also learn about nutrition and being healthy. Instructional time is from 9:00am to 4:00pm. Campers should bring two snacks and a lunch daily.

Barwell Road Community Center

Jul 19-Jul 23 M-F 8:00am-5:30pm Fee: \$140

Fit and Fun Camp

Age: 6-12 yrs. Our high-energy and fun camp creates workouts which combine cardiovascular/resistance training and functional training in a one of a kind environment. Our camp is designed to help children work on developing cardiovascular/ muscular endurance, team work, and perseverance of physical and mental challenges. The atmosphere created by the class is fun and motivational which fosters a "can do" attitude. All of the movements are taught safely and effectively under the close supervision of the thoroughly trained instructors. For kids who are new to exercise, our program introduces them to fitness at an early age and makes it easier for them to continue this "healthy habit" for the rest of their lives. For kids who are already exercising or playing sports, our program is designed to help them reach their next level of fitness and improve their performance. Participants should bring a snack and water bottle daily.

Glen Eden Pilot Park

Aug 9-Aug 13 M-F 9:00am-12:30pm Fee: \$100

Flag Football Camp

Age: 6-12 yrs. Flag football camp introduces a wide range of skills throughout the week including passing, receiving and deflagging, with a strong focus on the rules of the game. Each day ends with mini games where the coaches encourage good sportsmanship and teamwork. Participants will develop an understanding of offensive and defensive plays, and be encouraged to implement these skills into realistic scrimmages and game-play situations. Flag football summer camp is appropriate for players ranging from beginners, to those already well versed in the sport. Groups are separated by age and ability to ensure all players flourish in a positive learning environment while having a great time! Participants should bring a snack and water bottle daily.

Glen Eden Pilot Park

Jun 14-Jun 17 M-Th 9:00am-12:30pm Fee: \$80

Full STEAM Ahead

Age: 8-11 yrs. This camp didn't forget about the ARTs when it comes to STEM (Science, Technology, Engineering, and Math)! By incorporating art in the STEM curriculum, the camper's creativity will become front and center. Participants will experience a curriculum that is fundamentally packed with engaging activities and content that promotes hands-on learning. Campers will participate in various programs ranging from math challenges to art projects and science experiments. We are committed to our participants moving Full STEAM Ahead! Instructional time is from 9:00am to 4:00pm. Campers will participate in a variety of recreational activities during non-instructional time. Campers should bring lunch, two snacks, and a water bottle daily.

Brentwood Park

Jul 12-Jul 16 M-F 8:00am-6:00pm Fee: \$175
Aug 2-Aug 6 M-F 8:00am-6:00pm Fee: \$175

Girls in Motion Youth

Age: 7-10 yrs. Girls in Motion is a fun way to keep your girl active in an all-girl environment. This camp will allow participants to try out new and different sports, at an introductory level, while playing some of the all-time favorites as well. No experience is necessary in any sport as girls will focus on teambuilding, leadership, confidence, and having fun as individuals and as part of a team. We will build friendships while we encourage girls to give their all, build one another up, and to have fun as they take on new challenges and push themselves to become better players, teammates, and opponents. Come be a part of our girl sports world at Powell Drive Neighborhood Park..

Laurel Hills Community Center

Aug 16-Aug 20 M-F 8:30am-4:30pm Fee: \$145

Youth Summer Camps continued to page 18—

Girls Rule Sports Camp

Age: 6-12 yrs. Girls Rule Sports Camp is designed to empower and encourage young girls to participate in active recreation while trying new and exciting sports. During Girls Rule Sports Camp, campers will learn about the benefits of active recreation in an environment that fosters increased self-esteem, confidence, and building new friendships. Throughout this week-long camp, participants will focus on a new sport each day all while having fun in a traditional camp environment. Sports covered will include; soccer, softball, flag football, street hockey, volleyball, and basketball. Campers should bring two snacks, a lunch and a water bottle daily. Campers will participate in indoor and outdoor activities throughout the day. Program hours are 9:00am - 4:30pm.

Marsh Creek Community Center

Aug 9-Aug 13 M-F 8:30am-5:30pm Fee: \$180

Green Road Adventures Camp

Age: 6-11 yrs. End the summer with a bang! Get ready for a week of nonstop fun and excitement! Join us in our own backyard at Green Road for an action-filled summer day camp packed with engaging team-building activities, relays, and scavenger hunts. Arts & crafts, trivia, and other exciting adventures also await! This is sure to be a camp that is entertaining and enjoyable for each and every participant! Program hours are 9:00am-4:30pm. Early drop-off begins at 7:30am, and all campers must be picked up by 6:00pm. Campers should bring a lunch and two snacks each day.

Green Road Community Center

Aug 16-Aug 20 M-F 7:30am-6:00pm Fee: \$150

Hall of Fame Sports Camp

Age: 7-10 yrs. Campers will be exposed to a variety of sports and workouts. Water day, video games and arts and crafts are just some of many activities we will enjoy. Campers will learn fundamentals in basketball, soccer, flag football, hockey and baseball. Get Ready for a week of fun and sports. Campers should bring lunch and two snacks with them daily.

Roberts Park Community Center

Aug 16-Aug 20 M-F 8:00am-5:00pm Fee: \$100

Happy Trails

Age: 6-12 yrs. End your summer with a Bang! Keep the good times rolling at Jaycee before school starts. Come join us for a week long back to school bash including arts and crafts, games, sports activities and other exciting events. Program hours are 9:00am to 4:30pm. Early drop-off is at 7:30am and all campers must be picked up by 6:00pm. Participants should bring a lunch and two snacks daily.

Jaycee Community Center

Aug 16-Aug 20 M-F 7:30am-6:00pm Fee: \$150

Harry Potter Master Engineering w/LEGO Materials

Age: 8-12 yrs. Master the magic of Harry Potter using LEGO! Visit Diagon Alley, play a game of Quidditch and duel the evil Lord Voldemort. Hone your magical skills while learning about advanced Muggle (STEM) concepts. Participants should bring a snack and bottled water. Staff and curriculum provided by Play-Well TEKologies.

Brier Creek Community Center

Jul 12-Jul 16 M-F 1:00-4:00pm Fee: \$230
Aug 2-Aug 6 M-F 1:00-4:00pm Fee: \$230

Inventor's Workshop

Age: 6-8 yrs. Childhood curiosity, experimentation and imagination can develop one's play instinct; our Inventor's Workshop will highlight camper's creativity, challenge critical thinking, enhance problem solving, encourage teambuilding and provide opportunities for children to tinker, design and build a variety of gadgets, models, mazes, projects and machines with moveable wheels/arms. Throughout the camp, participants will learn about physical concepts such as friction, speed, and movement. Campers will also participate in games, activities, food experiences, science experiments, arts & crafts and more. Come join us for a week of innovation, fun and excitement. Inventors should pack a snack and water bottle each day!

Greystone Recreation Center

Jun 14-Jun 17 M-Th 1:00-4:00pm Fee: \$95
Jul 12-Jul 16 M-F 9:00am-12:00pm Fee: \$115

Just BEAD It

Age: 8-11 yrs. Campers will design and create their own unique designs with bracelets, necklaces, earrings and various other accessories using techniques such as braiding, beading, and embellishment. These young designers will show off their skills in a showcase at the end of the week and go home with a collection of personalized jewelry to model all over town. Look out, your designer may find themselves with a new hobby or side business. Bring your creativity, it's time to BEAD it! Our young artists should bring a water bottle and snack each day!

Greystone Recreation Center

Jul 19-Jul 23 M-F 9:00am-12:00pm Fee: \$120

Kamp Kiwanis

Age: 12-14 yrs. Campers learn together about social issues in our community and work with local agencies that are making a difference. They will hear from community leaders and engage in reflection activities. Participants will also receive leadership and team-building training, and learn about housing, hunger, poverty, caring for the environment, and other issues facing the local community. Campers will participate in various community service projects throughout the week. Please note that this camp runs July 6th-10th and closed on July 5th.

Kiwanis Community Center

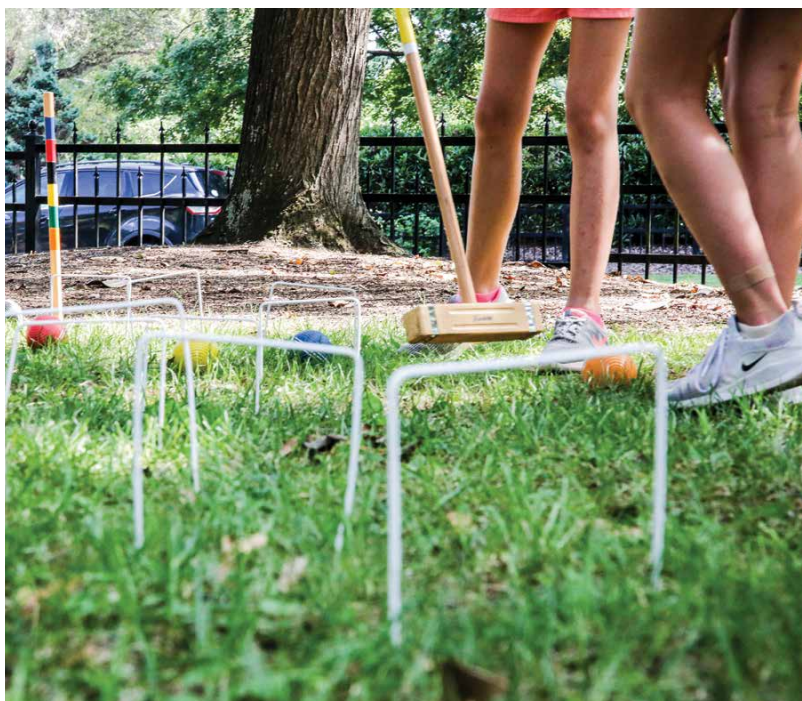
Jul 6-Jul 9 Tu-F 9:00am-12:00pm Fee: \$160

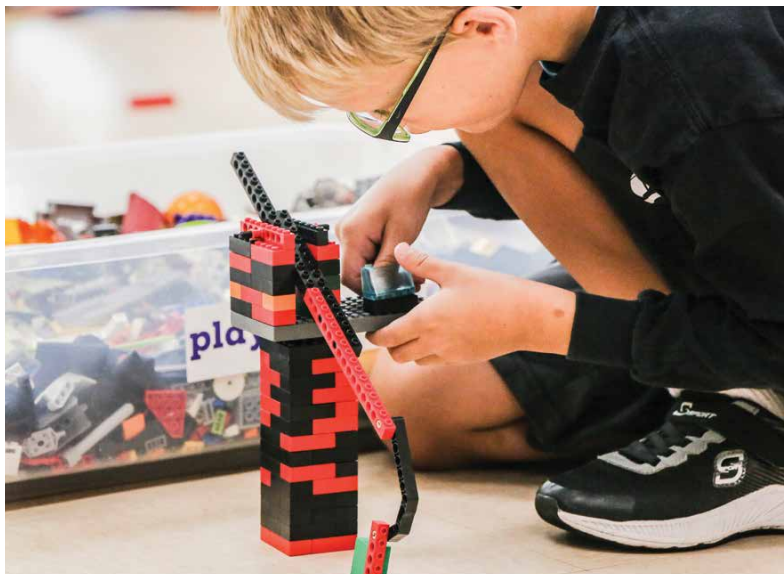
Kick It Up - Soccer

Age: 6-10 yrs. Kick, pass, and score a goal! We will do these and much more. From passing and dribbling to shooting and defense, our campers will work on teamwork and good sportsmanship. There will be time on the field and in the gym. A snack and a craft will add more fun! Campers will need an additional snack and lunch as well as a water bottle. Participants will be involved in indoor and outdoor activities throughout the day. Program hours are 9:00am - 4:30pm.

Marsh Creek Community Center

Jul 26-Jul 30 M-F 8:30am-5:30pm Fee: \$180





Kid Scientist

Age: 7-10 yrs. Are you ready to experiment and explore the world of science? Your future scientist will participate in themed experiments and record observations as we look at a different field of science every day. We will explore different scientific concepts and experiments to help us understand how things work in our world. We will learn about fun and safe reactions through nature and our own creations. Get ready for your scientist to experience this explosion of fun and learning.

Powell Drive Neighborhood Center

Jun 28-Jul 2 M-F 1:30-4:30pm Fee: \$90

Kids Cup Challenge

Age: 7-10 yrs. Is your camper ready to CHALLENGE themselves physically, mentally, and creatively? Get ready for campers to work towards different goals every day by taking on new obstacles. Our challengers will have to think outside the box working individually and as a team to race against the clock and against one another. Daily activities will include physically and mentally challenging activities, creative conquests, team and group initiatives, as well as engineering skills.

Powell Drive Neighborhood Center

Aug 2-Aug 6 M-F 1:30-4:30pm Fee: \$90

Krafty Sports

Age: 6-11 yrs. Come and join the "FANdemonium" as we spend each day learning all the components of a chosen sport and completing sports-themed craft projects. Join up and enjoy the full game experience. Participants should bring a lunch and two snacks each day. The program hours for this camp are 8:00am-4:00pm. Early drop-off and late pick-up are not available for this camp.

Kiwanis Community Center

Aug 2-Aug 6 M-F 8:00am-4:00pm Fee: \$145

LEGO® Brick City Architects

Age: 6-11 yrs. Bricksburg needs a refresh and is looking for architects who let their imagination run wild! Using LEGO Bricks and Technic elements, campers will build city-themed models including buildings, vehicles, bridges and more to accommodate the people of their new city - Brick by Brick! Campers will also get to construct famous landmarks! All participants take home crafts and at the end of the week, a custom mini figure!

Glen Eden Pilot Park

Aug 2-Aug 6 M-F 9:00am-12:00pm Fee: \$195

LEGO® Junior Robotics with WeDo 2.0

Age: 7-11 yrs. Here's your chance to turn your next LEGO creation into a robot, programmed to do exactly what you tell it to do! Our junior robotics camp works with WeDO 2.0, the newest version of elementary-level robotics from LEGO. Using drag-and-drop icon-based software, WeDO 2.0 software provides an introduction into the world of computer-programming and robotics that will equip your child to succeed in a technology-based marketplace. This fun, action-packed week combines real-life skills with real-kid fun!

Glen Eden Pilot Park

Jul 19-Jul 23 M-F 9:00am-12:00pm Fee: \$195

LEGO® Midway Mania

Age: 6-11 yrs. The North Carolina State Fair may have been temporarily closed but you can build your very own working Amusement Park! Campers will build a new motorized ride each day, learning how to make things spin, roll, turn and rock! Each day includes carnival-themed games, group challenges, model-building and more. All participants take home crafts and at the end of the week, a custom mini figure!

Glen Eden Pilot Park

Jul 26-Jul 30 M-F 9:00am-12:00pm Fee: \$195

Let's Sew Something

Age: 10-14 yrs. This sewing camp is offered to those who have some knowledge/experience with the use of a sewing machine. During this camp, the campers will accomplish the following: Short review of sewing machine operation/safety and pattern reading. Learn about fabric and how it is made. How to read, cut and assemble a pattern into a finished project. Learn new techniques. Various techniques will be discussed, depending on the project. Participants will learn about various fabrics and where they come from. In addition, they will explore patterns. By the end of this week, participants will come away with some new techniques in the assembly of an intermediate project utilizing new skills they have learned. Sewing machines and some supplies will be provided. Participants will be required to provide their own fabric and thread for all projects. Participants must have knowledge in the use of a sewing machine. No time will be spent teaching the basic operation of a sewing machine, those skills are taught in our beginner camp. Participants should bring a lunch and two snacks each day.

Pullen Community Center

Jul 19-Jul 23 M-F 9:00am-5:00pm Fee: \$150

Aug 2-Aug 6 M-F 9:00am-5:00pm Fee: \$150

Mad Lab

Age: 6-8 yrs. Come into our scientist lab for the week! During this camp, we will be doing lots of funky experiments. There will also be water, nature, and invention stations set up for the participants to create masterpieces. Participants will be making crafts and science snacks during the week. Participants should bring one snack each day.

Pullen Community Center

Jul 26-Jul 30 M-F 1:00-5:00pm Fee: \$100

Master Builders

Age: 8-11 yrs. Trigger your builder's lively imagination and creativity while encouraging problem solving, teamwork and learning through play with our very own Master Builders. In this workshop, young constructors will master the craft of basic brick building while challenging themselves with more complex projects and trials. These future architects will engage in hands-on play, arts & crafts, science experiments, group challenges and food experiences all themed to design and building. Please remember to send these creative masterminds with a water bottle and snack each day to help refuel inspiration.

Greystone Recreation Center

Jul 19-Jul 23 M-F 1:00-4:00pm Fee: \$130

Youth Summer Camps continued to page 20—

Nature Week at the Creek

Age: 6-10 yrs. Hey, what's that sound? It's the call of the wild! Our camp will provide a variety of outdoor recreational opportunities to homebodies and outdoor enthusiasts alike. The camp day will consist of traditional camp activities such as arts and crafts, games and group activities all with a nature theme. Through special guests and hiking experiences campers will learn about local conservation and wildlife. Campers should bring two snacks, a lunch and a water bottle daily. Participants will be involved in indoor and outdoor activities throughout the day. Program hours are 9:00am - 4:30pm.

Marsh Creek Community Center

Jul 19-Jul 23 M-F 8:30am-5:30pm Fee: \$200

Ooey Gooley Recycle Art Camp

Age: 6-11 yrs. If you like to get messy, this camp is for you. Come along as we learn to take what some people call trash and turn it into treasure. The fun may get extremely messy, so please wear appropriate clothes and join us in this trash-to-treasure camp. Make sure to include two snacks and a lunch daily. Early drop off and late pick up options are not offered for this camp.

Kiwanis Community Center

Jul 26-Jul 30 M-F 9:00am-4:00pm Fee: \$150

Out of this World

Age: 6-8 yrs. 3, 2, 1... Blast Off! Join us for a journey into outer space as we use our imaginations and skills to complete an astronaut training mission. This week-long space academy will have camper's engaged in activities to enhance critical thinking, discovery, and fun. These future stargazers will participate in experiments, food experiences, games, arts & crafts and more... including a field trip. This camp is sure to be out of this world! Astronaut hopefuls should pack a snack and water bottle each day.

Greystone Recreation Center

Jun 14-Jun 17 M-Th 9:00am-12:00pm Fee: \$95

Passport to Fun

Age: 6-8 yrs. In Passport to Fun, campers will transform into tourists as we discover the wonders of the World. We will embark on a journey around the world, expanding our knowledge on cultures, plants, languages, foods, animals and landmarks from various countries. Children will discover where countries are located through basic geography and opportunities to explore maps. There will also be a field trip during the week to support understanding of a specific country we have studied. Get your passport ready (don't worry, we will provide that) and come along on a journey of a lifetime. Our young explorers should plan to bring a water bottle and snack each day!

Greystone Recreation Center

Jun 28-Jul 2 M-F 1:00-4:00pm Fee: \$115



Raleigh History Hunters

Age: 9-13 yrs. This two week-long summer camp presented by HRM will focus on the history of Raleigh, Wake County and North Carolina through crafts, programs, presentations and activities. The summer camp will be designed by members of COR Museum and Mordecai Historic Park to feature virtual and in-person lessons, historic crafts and activities, and more. Participants will spend their time hunting through history, playing historic games, and learning about the city's history. The program will last for two weeks and each camp will feature the same content. Participants should bring a lunch and two snacks each day. Program hours are 9:00am to 5:00pm Drop off is available from 8:45am and all campers must be picked up by 5:00pm.

Fred Fletcher Park

Jun 14-Jun 25	M-F	9:00am-5:00pm	Fee: \$400
Jul 5-Jul 16	M-F	9:00am-5:00pm	Fee: \$400
Jul 19-Jul 30	M-F	9:00am-5:00pm	Fee: \$400
Aug 2-Aug 13	M-F	9:00am-5:00pm	Fee: \$400

Science Exploration Camp

Age: 8-11 yrs. Campers will explore various disciplines of science, including agricultural and environmental life sciences, biological sciences, engineering sciences, and physical sciences. Campers will perform experiments and will take part in traditional camp activities, including arts and crafts and games. This is a great camp for STEM participants. Drop-off is available starting at 8:45am. Participants should bring a water bottle, lunch and two snacks each day.

Powell Drive Neighborhood Center

Jul 26-Jul 30 M-F 9:00am-5:00pm Fee: \$185

Sew it Seams

Age: 8-11 yrs. Do you have an eye for design and love expressing your creativity through art, crafts and various textures? In this week-long creative setting, campers will sharpen their techniques and learn new skills! Campers will design and create projects such as pillows, purses, cross-stitch, sewing buttons, small stuffed pets and more! They will also learn how to work a sewing machine and practice using it with the help of an instructor. Your youngster will enjoy the independence and creativity as they stitch seams while conversing with other artistic enthusiasts. Our young designers should bring a water bottle and snack to camp each day!

Greystone Recreation Center

Jul 12-Jul 16 M-F 1:00-4:00pm Fee: \$125

Sewing Camp for Beginners

Age: 10-14 yrs. This sewing camp is offered to those who have little or no experience with machine sewing. Significant time will be spent learning:

- The basic operation and functions of a sewing machine.
- How to thread the machine and fill the bobbin.
- The various hand tools used regularly when machine sewing.
- Sewing machine safety.

In addition, participants will be introduced to patterns: language, creating a pattern, and learning the various markings on a pattern and how to use them. They will cut out a project from fabric and assemble the pieces to complete an easy to sew project by week's end. By the end of this camp, participants will have a basic understanding of operating

a sewing machine and the assembly of a simple project or projects utilizing the skills they have learned. Sewing machines and some supplies will be provided. Participants will be required to provide their own fabric and thread for all projects. No sewing experience is required. Participants should bring a lunch and two snacks each day.

Pullen Community Center

Jun 21-Jun 25	M-F	9:00am-5:00pm	Fee: \$150
Jun 28-Jul 2	M-F	9:00am-5:00pm	Fee: \$150

SKATEch

Age: 8-13 yrs. SKATEch combines the art of skateboarding with technology to provide campers with an exciting and unique experience. Campers will have supervised skateboarding time at the Marsh Creek skatepark or access to portable skatepark elements on a daily basis. Campers will create a digital project highlighting their experiences from the week. Campers are encouraged to bring their own or reserve a set of elbow and knee pads, a helmet and skateboard. Campers will also need two snacks, a lunch and water bottle daily. Campers will participate in indoor and outdoor activities throughout the day. Program hours are 9:00am-4:30pm. Campers will participate in a variety of recreational activities during non-program time. Please note that counselors will supervise skateboarding for safety but will not provide skateboarding instruction.

Marsh Creek Community Center

Aug 2-Aug 6	M-F	8:30am-5:30pm	Fee: \$200
-------------	-----	---------------	------------

So You Say You Can Dance Camp

Age: 6-11 yrs. This camp is for beginner to intermediate campers and will include the performing art of dance with a focus on jazz, lyrical, hip hop, cheer and modern. Campers will participate in a recital at the end of the week. Camp will include traditional camp activities such as active games, passive games, and arts and crafts. Early drop-off is available starting at 8:45am. Participants should bring a water bottle, lunch and two snacks each day.

Powell Drive Neighborhood Center

Jun 21-Jun 25	M-F	9:00am-5:00pm	Fee: \$140
---------------	-----	---------------	------------

Space Cadets

Age: 6-8 yrs. Are you one with the force? Join us the week of July 26th to master the power of the force and become a master of the galactic world! Young pupils will make their capes, craft lighted swords, create droids and attend our training camp to harness the force. Our young cadets will enjoy obstacles, participate in food experiences, arts and crafts, science experiments and traditional games and activities with a cosmic twist. Their might is sure to be tested as they work to don the honorary robe and release their inner hero. Your space cadet will make memories that are out of this world! Please be sure to send trainees with a water bottle and snack each day!

Greystone Recreation Center

Jul 26-Jul 30	M-F	9:00am-12:00pm	Fee: \$110
---------------	-----	----------------	------------

Spike Camp

Age: 12-16 yrs. This beginning level volleyball camp focuses on the fundamentals: Passing, setting, serving and spiking. Boys and girls will also work on digs, diving, offensive and defensive game strategies. Participants should bring a lunch, water bottle and two snacks each day. Structured activities are from 9:00am to 4:30pm. Early drop-off begins at 8:30am, late pick up by 6:00pm.

Carolina Pines Community Center

Jun 21-Jun 25	M-F	8:30am-6:00pm	Fee: \$115
Jul 12-Jul 16	M-F	8:30am-6:00pm	Fee: \$115

Squad: Cheer and Dance Team Camp

Age: 7-10 yrs. Are you ready to show your spirit? Come join our cheer and dance team squad! Participants will learn pom motions, jumps, leg holds, turns, high kicks, and more. Your camper will go home every day with a new understanding of the cheer/dance team world! At the end of the week we will show off all our hard work with a performance and recognize each spirit leader with a trait they exhibited throughout the week. Come join the fun and get ready to yell and sweat with the Laurel Hills Cheer/Dance Team Squad!

Laurel Hills Community Center

Jul 26-Jul 30	M-F	9:00am-12:00pm	Fee: \$90
---------------	-----	----------------	-----------

Summer Explorers Life

Age: 6-12 yrs. Come and explore an endless variety of activities at Summer Explorers Life Camp! Participants will enjoy recreational activities; including arts & crafts, food experiences, science, activity specialists, sports, games, and more! Don't miss the exciting on-site field trips, special events, and swimming at City of Raleigh Aquatics facilities each week. This program offers low camper to staff ratios with caring and experienced staff who have attended 25+ hours of training focused on working with school-aged participants. Structured program hours are 9:00am-4:30pm. Curbside early drop off is available at all locations from 7:30-9:00am. Campers must be picked up by 6:00pm. Activities will take place both indoors and outdoors throughout the day. Participants should bring a lunch, refillable water bottle and two snacks each day. Camp fees will be prorated to \$96 for the week of June 14-June 17 and July 6-July 9.

Hilburn Academy

Jun 21-Jun 25	M-F	7:30am-6:00pm	Fee: \$120
Jun 28-Jul 2	M-F	7:30am-6:00pm	Fee: \$120
Jul 6-Jul 9	Tu-F	7:30am-6:00pm	Fee: \$96
Jul 12-Jul 16	M-F	7:30am-6:00pm	Fee: \$120
Jul 19-Jul 23	M-F	7:30am-6:00pm	Fee: \$120
Jul 26-Jul 30	M-F	7:30am-6:00pm	Fee: \$120
Aug 2-Aug 6	M-F	7:30am-6:00pm	Fee: \$120

Ravenscroft School

Jun 21-Jun 25	M-F	7:30am-6:00pm	Fee: \$120
Jun 28-Jul 2	M-F	7:30am-6:00pm	Fee: \$120
Jul 6-Jul 9	Tu-F	7:30am-6:00pm	Fee: \$96
Jul 12-Jul 16	M-F	7:30am-6:00pm	Fee: \$120
Jul 19-Jul 23	M-F	7:30am-6:00pm	Fee: \$120
Jul 26-Jul 30	M-F	7:30am-6:00pm	Fee: \$120
Aug 2-Aug 6	M-F	7:30am-6:00pm	Fee: \$120

Underwood Magnet Elementary School

Jun 21-Jun 25	M-F	7:30am-6:00pm	Fee: \$120
Jun 28-Jul 2	M-F	7:30am-6:00pm	Fee: \$120
Jul 6-Jul 9	Tu-F	7:30am-6:00pm	Fee: \$96
Jul 12-Jul 16	M-F	7:30am-6:00pm	Fee: \$120
Jul 19-Jul 23	M-F	7:30am-6:00pm	Fee: \$120
Jul 26-Jul 30	M-F	7:30am-6:00pm	Fee: \$120
Aug 2-Aug 6	M-F	7:30am-6:00pm	Fee: \$120

Summer X-Press Plus Camp

Age: 5-11 yrs. Looking for one more week of fun? Join us for this extension of our Summer X Press program. Daily activities include sports, games, art, crafts, fieldtrips and so much more. Structured activities are from 9:00am-4:30pm each day. Early drop off begins at 7:30am and pick up must be by 6:00pm. Campers will need to bring a lunch and 2 snacks every day.

John Chavis Community Center

Aug 16-Aug 20	M-F	7:30am-6:00pm	Fee: \$100
---------------	-----	---------------	------------

Swim and Serve: Best of Millbrook

Age: 7-11 yrs. Come experience the best that your local park has to offer. Swim and Serve will be based out of the community center at Millbrook Exchange Park, but will utilize some of the other great amenities that the park has to offer. Each day campers will go to the pool at the neighboring aquatic facility to swim. Instructors will be on site to teach basic swimming and help excel current swimmers, but there will also be time for open swim in the main pool and splash pad. Campers will also receive daily lessons at the onsite tennis courts. Campers should provide 2 snacks and a lunch daily, and are encouraged to bring a reusable water bottle to keep with them throughout the day.

Millbrook Exchange Community Center

Aug 16-Aug 20	M-F	8:00am-5:00pm	Fee: \$160
---------------	-----	---------------	------------

Track and Field Camp

Age: 7-14 yrs. Campers will learn how to participate in running events at a track meet. Sprinters and distance runners will receive training to improve or enhance their running styles. Campers will learn basic strength and conditioning exercises through recreational activities in a fun and competitive atmosphere. The experience will allow campers to engage in track and field events with the knowledge and self-confidence to excel. Instructional time is from 9:00am to 4:00pm Early drop-off starts at 7:30am and participants must be picked up by 6:00pm Campers will participate in a variety of recreational activities during non-instructional time. Campers should bring two snacks and a lunch daily. Camp will not meet on Monday, July 5th in observance of the holiday.

Barwell Road Community Center

Jul 6-Jul 9	Tu-F	8:00am-5:30pm	Fee: \$120
-------------	------	---------------	------------

Youth Summer Camps continued to page 22—

Twirl & Swirl

Age: 6-9 yrs. Is your young performer ready to try something new? This baton twirling camp will give your star an opportunity to learn the art of baton twirling. Twirlers will learn and combine basic twirling and dance skills that will be organized into a "out of this twirl" dazzling routine. Baton twirling instills discipline, confidence and the value of hard work, dedication and perseverance. No prior experience is necessary. Instructor, Lauren Nogle, has been awarded Gold, Silver, and Bronze medals at three different World Baton Twirling Championships, a national silver medalist, a three time California state champion, a two time North Carolina state champion and the NC State Feature Twirler from 2012-2014; she will bring experience and enthusiasm to inspire young performers with a new and exciting type of rhythmic gymnastics/dance. Twirlers should wear athletic footwear and clothing; batons will be provided, but children are welcome to bring their own if they have one. Please send water bottles and snacks each day to help refresh our young shooting stars.

Greystone Recreation Center

Aug 2-Aug 6 M-F 1:00-4:00pm Fee: \$275

Ultimate Frisbee Camp

Age: 6-12 yrs. Campers will discover the sport of Ultimate Frisbee in a fun, exciting and nurturing environment! Campers will learn important fundamentals and techniques to help each camper improve their skills and understanding of Ultimate Frisbee. Campers will understand "The Spirit of the Game" which is a governing rule in Ultimate Frisbee which is based on self-officiating. Participants should bring a snack and water bottle daily. Due to the camp only being 4 days, camp is pro-rated to \$80.

Glen Eden Pilot Park

Jul 6-Jul 9 Tu-F 9:00am-12:30pm Fee: \$80

Wonders of Wizardry

Age: 8-11 yrs. Has your child ever wanted to experience a magical fantasy world, the deliciousness of a Wizard butter brew or the excitement of magic and experiments? "Wonders of Wizardry" will provide arts & crafts, science experiments, food experiences, and wizarding activities like House Sorting, Quidditch, personalized Patronuses, and more. If your child is a fan of the wizarding world, this week will be an incredible chance to indulge his/her love for one of the most

iconic genres of this generation. While we can't promise that your child will master spells, we can assure their week in Wonders of Wizardry will be one for the (spell) books! Please send young wizards with a water bottle and snack each day!

Greystone Recreation Center

Jun 21-Jun 25 M-F 1:00-4:00pm Fee: \$115
Jul 26-Jul 30 M-F 1:00-4:00pm Fee: \$115

World of Sports Camp

Age: 8-11 yrs. World of Sports Camp gives campers the opportunity to learn teamwork and sportsmanship through a variety of fun games & activities. Campers will participate in a variety of sports from around the world, will also make some sports-related arts and craft projects. Campers should bring a lunch, two snacks, and water daily.

Kiwanis Community Center

Jun 21-Jun 25 M-F 9:00am-5:00pm Fee: \$175





WOW Camp

Age: 6-11 yrs. Come join the summer camp staff for an additional week of traditional summer camp fun and excitement. Participants will take part in activities such as arts and crafts, games, sports and other exciting events. Structured activities will be during the hours of 9:00am to 4:30pm Early drop-off begins at 7:30am, latest pickup is 6:00pm Participants should bring a lunch, water bottle and two snacks each day.

Carolina Pines Community Center

Aug 16-Aug 20 M-F 7:30am-6:00pm Fee: \$115

Traditional Camps

Summer X-Press Camp

Age: 6-12 yrs. The Summer X-Press Program provides a high-quality summer camp experience at a reasonable cost. This program incorporates a stimulating and exciting atmosphere through organized activities including: arts and crafts, recreational sports and games, field trips, specialty programs and much more. The program is staffed by caring and experienced counselors that attend more than 20 hours of training focused on working with school-aged participants. Participants should be prepared to have tons of fun with plenty of laughs, smiles and excitement. Structured program hours are 9:00am-4:30pm. Early drop off is available at 7:30am and all campers must be picked up by 6pm. Participants will be involved in indoor and outdoor activities throughout the day. Participants should bring a lunch, refillable water bottle, and two snacks each day. Camp fees will be prorated the week of June 14-June 17 and July 6-July 9 to \$28 for \$35 a week sites and \$56 for \$70 a week sites.

Abbots Creek Community Center

Jun 14-Jun 17	M-Th	7:30am-6:00pm	Fee: \$56
Jun 21-Jun 25	M-F	7:30am-6:00pm	Fee: \$70
Jun 28-Jul 2	M-F	7:30am-6:00pm	Fee: \$70
Jul 6-Jul 9	Tu-F	7:30am-6:00pm	Fee: \$56
Jul 12-Jul 16	M-F	7:30am-6:00pm	Fee: \$70
Jul 19-Jul 23	M-F	7:30am-6:00pm	Fee: \$70
Jul 26-Jul 30	M-F	7:30am-6:00pm	Fee: \$70
Aug 2-Aug 6	M-F	7:30am-6:00pm	Fee: \$70
Aug 9-Aug 13	M-F	7:30am-6:00pm	Fee: \$70

Barwell Road Community Center

Jun 14-Jun 17	M-Th	7:30am-6:00pm	Fee: \$56
Jun 21-Jun 25	M-F	7:30am-6:00pm	Fee: \$70
Jun 28-Jul 2	M-F	7:30am-6:00pm	Fee: \$70
Jul 6-Jul 9	Tu-F	7:30am-6:00pm	Fee: \$56
Jul 12-Jul 16	M-F	7:30am-6:00pm	Fee: \$70
Jul 19-Jul 23	M-F	7:30am-6:00pm	Fee: \$70
Jul 26-Jul 30	M-F	7:30am-6:00pm	Fee: \$70
Aug 2-Aug 6	M-F	7:30am-6:00pm	Fee: \$70
Aug 9-Aug 13	M-F	7:30am-6:00pm	Fee: \$70

Biltmore Hills Community Center

Jun 14-Jun 17	M-Th	7:30am-6:00pm	Fee: \$28
Jun 21-Jun 25	M-F	7:30am-6:00pm	Fee: \$35
Jun 28-Jul 2	M-F	7:30am-6:00pm	Fee: \$35
Jul 6-Jul 9	Tu-F	7:30am-6:00pm	Fee: \$28
Jul 12-Jul 16	M-F	7:30am-6:00pm	Fee: \$35
Jul 19-Jul 23	M-F	7:30am-6:00pm	Fee: \$35
Jul 26-Jul 30	M-F	7:30am-6:00pm	Fee: \$35
Aug 2-Aug 6	M-F	7:30am-6:00pm	Fee: \$35
Aug 9-Aug 13	M-F	7:30am-6:00pm	Fee: \$35

Carolina Pines Community Center

Jun 14-Jun 17	M-Th	7:30am-6:00pm	Fee: \$56
Jun 21-Jun 25	M-F	7:30am-6:00pm	Fee: \$70
Jun 28-Jul 2	M-F	7:30am-6:00pm	Fee: \$70
Jul 6-Jul 9	Tu-F	7:30am-6:00pm	Fee: \$56
Jul 12-Jul 16	M-F	7:30am-6:00pm	Fee: \$70
Jul 19-Jul 23	M-F	7:30am-6:00pm	Fee: \$70
Jul 26-Jul 30	M-F	7:30am-6:00pm	Fee: \$70
Aug 2-Aug 6	M-F	7:30am-6:00pm	Fee: \$70
Aug 9-Aug 13	M-F	7:30am-6:00pm	Fee: \$70

Green Road Community Center

Jun 14-Jun 17	M-Th	7:30am-6:00pm	Fee: \$56
Jun 21-Jun 25	M-F	7:30am-6:00pm	Fee: \$70
Jun 28-Jul 2	M-F	7:30am-6:00pm	Fee: \$70
Jul 6-Jul 9	Tu-F	7:30am-6:00pm	Fee: \$56

Jul 12-Jul 16	M-F	7:30am-6:00pm	Fee: \$70
Jul 19-Jul 23	M-F	7:30am-6:00pm	Fee: \$70
Jul 26-Jul 30	M-F	7:30am-6:00pm	Fee: \$70
Aug 2-Aug 6	M-F	7:30am-6:00pm	Fee: \$70
Aug 9-Aug 13	M-F	7:30am-6:00pm	Fee: \$70

Halifax Community Center

Jun 14-Jun 17	M-Th	7:30am-6:00pm	Fee: \$56
Jun 21-Jun 25	M-F	7:30am-6:00pm	Fee: \$70
Jun 28-Jul 2	M-F	7:30am-6:00pm	Fee: \$70
Jul 6-Jul 9	Tu-F	7:30am-6:00pm	Fee: \$56
Jul 12-Jul 16	M-F	7:30am-6:00pm	Fee: \$70
Jul 19-Jul 23	M-F	7:30am-6:00pm	Fee: \$70
Jul 26-Jul 30	M-F	7:30am-6:00pm	Fee: \$70
Aug 2-Aug 6	M-F	7:30am-6:00pm	Fee: \$70
Aug 9-Aug 13	M-F	7:30am-6:00pm	Fee: \$70

Hill Street Neighborhood Center

Jun 14-Jun 17	M-Th	7:30am-6:00pm	Fee: \$56
Jun 21-Jun 25	M-F	7:30am-6:00pm	Fee: \$70
Jun 28-Jul 2	M-F	7:30am-6:00pm	Fee: \$70
Jul 6-Jul 9	Tu-F	7:30am-6:00pm	Fee: \$56
Jul 12-Jul 16	M-F	7:30am-6:00pm	Fee: \$70
Jul 19-Jul 23	M-F	7:30am-6:00pm	Fee: \$70
Jul 26-Jul 30	M-F	7:30am-6:00pm	Fee: \$70
Aug 2-Aug 6	M-F	7:30am-6:00pm	Fee: \$70
Aug 9-Aug 13	M-F	7:30am-6:00pm	Fee: \$70

Jaycee Community Center

Jun 14-Jun 17	M-Th	7:30am-6:00pm	Fee: \$56
Jun 21-Jun 25	M-F	7:30am-6:00pm	Fee: \$70
Jun 28-Jul 2	M-F	7:30am-6:00pm	Fee: \$70
Jul 6-Jul 9	Tu-F	7:30am-6:00pm	Fee: \$56
Jul 12-Jul 16	M-F	7:30am-6:00pm	Fee: \$70
Jul 19-Jul 23	M-F	7:30am-6:00pm	Fee: \$70
Jul 26-Jul 30	M-F	7:30am-6:00pm	Fee: \$70
Aug 2-Aug 6	M-F	7:30am-6:00pm	Fee: \$70
Aug 9-Aug 13	M-F	7:30am-6:00pm	Fee: \$70

John Chavis Community Center

Jun 14-Jun 17	M-Th	7:30am-6:00pm	Fee: \$56
Jun 21-Jun 25	M-F	7:30am-6:00pm	Fee: \$70
Jun 28-Jul 2	M-F	7:30am-6:00pm	Fee: \$70
Jul 6-Jul 9	Tu-F	7:30am-6:00pm	Fee: \$56
Jul 12-Jul 16	M-F	7:30am-6:00pm	Fee: \$70
Jul 19-Jul 23	M-F	7:30am-6:00pm	Fee: \$70

Youth Summer Camps continued to page 24—

Jul 26-Jul 30	M-F	7:30am-6:00pm	Fee: \$70
Aug 2-Aug 6	M-F	7:30am-6:00pm	Fee: \$70
Aug 9-Aug 13	M-F	7:30am-6:00pm	Fee: \$70

Lake Lynn Community Center

Jun 14-Jun 17	M-Th	7:30am-6:00pm	Fee: \$56
Jun 21-Jun 25	M-F	7:30am-6:00pm	Fee: \$70
Jun 28-Jul 2	M-F	7:30am-6:00pm	Fee: \$70
Jul 6-Jul 9	Tu-F	7:30am-6:00pm	Fee: \$56
Jul 12-Jul 16	M-F	7:30am-6:00pm	Fee: \$70
Jul 19-Jul 23	M-F	7:30am-6:00pm	Fee: \$70
Jul 26-Jul 30	M-F	7:30am-6:00pm	Fee: \$70
Aug 2-Aug 6	M-F	7:30am-6:00pm	Fee: \$70
Aug 9-Aug 13	M-F	7:30am-6:00pm	Fee: \$70

Laurel Hills Community Center

Jun 14-Jun 17	M-Th	7:30am-6:00pm	Fee: \$56
Jun 21-Jun 25	M-F	7:30am-6:00pm	Fee: \$70
Jun 28-Jul 2	M-F	7:30am-6:00pm	Fee: \$70
Jul 6-Jul 9	Tu-F	7:30am-6:00pm	Fee: \$56
Jul 12-Jul 16	M-F	7:30am-6:00pm	Fee: \$70
Jul 19-Jul 23	M-F	7:30am-6:00pm	Fee: \$70
Jul 26-Jul 30	M-F	7:30am-6:00pm	Fee: \$70
Aug 2-Aug 6	M-F	7:30am-6:00pm	Fee: \$70
Aug 9-Aug 13	M-F	7:30am-6:00pm	Fee: \$70

Lions Park Community Center

Jun 14-Jun 17	M-Th	7:30am-6:00pm	Fee: \$56
Jun 21-Jun 25	M-F	7:30am-6:00pm	Fee: \$70
Jun 28-Jul 2	M-F	7:30am-6:00pm	Fee: \$70
Jul 6-Jul 9	Tu-F	7:30am-6:00pm	Fee: \$56
Jul 12-Jul 16	M-F	7:30am-6:00pm	Fee: \$70
Jul 19-Jul 23	M-F	7:30am-6:00pm	Fee: \$70
Jul 26-Jul 30	M-F	7:30am-6:00pm	Fee: \$70
Aug 2-Aug 6	M-F	7:30am-6:00pm	Fee: \$70
Aug 9-Aug 13	M-F	7:30am-6:00pm	Fee: \$70

Method Road Community Center

Jun 14-Jun 17	M-Th	7:30am-6:00pm	Fee: \$56
Jun 21-Jun 25	M-F	7:30am-6:00pm	Fee: \$70
Jun 28-Jul 2	M-F	7:30am-6:00pm	Fee: \$70
Jul 6-Jul 9	Tu-F	7:30am-6:00pm	Fee: \$56
Jul 12-Jul 16	M-F	7:30am-6:00pm	Fee: \$70
Jul 19-Jul 23	M-F	7:30am-6:00pm	Fee: \$70
Jul 26-Jul 30	M-F	7:30am-6:00pm	Fee: \$70
Aug 2-Aug 6	M-F	7:30am-6:00pm	Fee: \$70
Aug 9-Aug 13	M-F	7:30am-6:00pm	Fee: \$70

Millbrook Exchange Community Center

Jun 14-Jun 17	M-Th	7:30am-6:00pm	Fee: \$56
Jun 21-Jun 25	M-F	7:30am-6:00pm	Fee: \$70
Jun 28-Jul 2	M-F	7:30am-6:00pm	Fee: \$70
Jul 6-Jul 9	Tu-F	7:30am-6:00pm	Fee: \$56
Jul 12-Jul 16	M-F	7:30am-6:00pm	Fee: \$70
Jul 19-Jul 23	M-F	7:30am-6:00pm	Fee: \$70
Jul 26-Jul 30	M-F	7:30am-6:00pm	Fee: \$70
Aug 2-Aug 6	M-F	7:30am-6:00pm	Fee: \$70
Aug 9-Aug 13	M-F	7:30am-6:00pm	Fee: \$70

Optimist Community Center

Jun 14-Jun 17	M-Th	7:30am-6:00pm	Fee: \$56
Jun 21-Jun 25	M-F	7:30am-6:00pm	Fee: \$70
Jun 28-Jul 2	M-F	7:30am-6:00pm	Fee: \$70
Jul 6-Jul 9	Tu-F	7:30am-6:00pm	Fee: \$56
Jul 12-Jul 16	M-F	7:30am-6:00pm	Fee: \$70
Jul 19-Jul 23	M-F	7:30am-6:00pm	Fee: \$70
Jul 26-Jul 30	M-F	7:30am-6:00pm	Fee: \$70
Aug 2-Aug 6	M-F	7:30am-6:00pm	Fee: \$70
Aug 9-Aug 13	M-F	7:30am-6:00pm	Fee: \$70

Ralph Campbell Neighborhood Center

Jun 14-Jun 17	M-Th	7:30am-6:00pm	Fee: \$28
Jun 21-Jun 25	M-F	7:30am-6:00pm	Fee: \$35
Jun 28-Jul 2	M-F	7:30am-6:00pm	Fee: \$35
Jul 6-Jul 9	Tu-F	7:30am-6:00pm	Fee: \$28
Jul 12-Jul 16	M-F	7:30am-6:00pm	Fee: \$35
Jul 19-Jul 23	M-F	7:30am-6:00pm	Fee: \$35
Jul 26-Jul 30	M-F	7:30am-6:00pm	Fee: \$35
Aug 2-Aug 6	M-F	7:30am-6:00pm	Fee: \$35
Aug 9-Aug 13	M-F	7:30am-6:00pm	Fee: \$35

Roberts Park Community Center

Jun 14-Jun 17	M-Th	7:30am-6:00pm	Fee: \$28
Jun 21-Jun 25	M-F	7:30am-6:00pm	Fee: \$35
Jun 28-Jul 2	M-F	7:30am-6:00pm	Fee: \$35
Jul 6-Jul 9	Tu-F	7:30am-6:00pm	Fee: \$28
Jul 12-Jul 16	M-F	7:30am-6:00pm	Fee: \$35
Jul 19-Jul 23	M-F	7:30am-6:00pm	Fee: \$35
Jul 26-Jul 30	M-F	7:30am-6:00pm	Fee: \$35
Aug 2-Aug 6	M-F	7:30am-6:00pm	Fee: \$35
Aug 9-Aug 13	M-F	7:30am-6:00pm	Fee: \$35

Sanderford Road Neighborhood Center

Jun 14-Jun 17	M-Th	7:30am-6:00pm	Fee: \$28
Jun 21-Jun 25	M-F	7:30am-6:00pm	Fee: \$35
Jun 28-Jul 2	M-F	7:30am-6:00pm	Fee: \$35
Jul 6-Jul 9	Tu-F	7:30am-6:00pm	Fee: \$28
Jul 12-Jul 16	M-F	7:30am-6:00pm	Fee: \$35
Jul 19-Jul 23	M-F	7:30am-6:00pm	Fee: \$35
Jul 26-Jul 30	M-F	7:30am-6:00pm	Fee: \$35
Aug 2-Aug 6	M-F	7:30am-6:00pm	Fee: \$35
Aug 9-Aug 13	M-F	7:30am-6:00pm	Fee: \$35

Sgt. Courtney T. Johnson Neighborhood Center

Jun 14-Jun 17	M-Th	7:30am-6:00pm	Fee: \$28
Jun 21-Jun 25	M-F	7:30am-6:00pm	Fee: \$35
Jun 28-Jul 2	M-F	7:30am-6:00pm	Fee: \$35
Jul 6-Jul 9	Tu-F	7:30am-6:00pm	Fee: \$28
Jul 12-Jul 16	M-F	7:30am-6:00pm	Fee: \$35
Jul 19-Jul 23	M-F	7:30am-6:00pm	Fee: \$35
Jul 26-Jul 30	M-F	7:30am-6:00pm	Fee: \$35
Aug 2-Aug 6	M-F	7:30am-6:00pm	Fee: \$35
Aug 9-Aug 13	M-F	7:30am-6:00pm	Fee: \$35

Tarboro Road Community Center

Jun 14-Jun 17	M-Th	7:30am-6:00pm	Fee: \$28
Jun 21-Jun 25	M-F	7:30am-6:00pm	Fee: \$35
Jun 28-Jul 2	M-F	7:30am-6:00pm	Fee: \$35
Jul 6-Jul 9	Tu-F	7:30am-6:00pm	Fee: \$28
Jul 12-Jul 16	M-F	7:30am-6:00pm	Fee: \$35
Jul 19-Jul 23	M-F	7:30am-6:00pm	Fee: \$35
Jul 26-Jul 30	M-F	7:30am-6:00pm	Fee: \$35
Aug 2-Aug 6	M-F	7:30am-6:00pm	Fee: \$35
Aug 9-Aug 13	M-F	7:30am-6:00pm	Fee: \$35

Worthdale Community Center

Jun 14-Jun 17	M-Th	7:30am-6:00pm	Fee: \$28
Jun 21-Jun 25	M-F	7:30am-6:00pm	Fee: \$35
Jun 28-Jul 2	M-F	7:30am-6:00pm	Fee: \$35
Jul 6-Jul 9	Tu-F	7:30am-6:00pm	Fee: \$28
Jul 12-Jul 16	M-F	7:30am-6:00pm	Fee: \$35
Jul 19-Jul 23	M-F	7:30am-6:00pm	Fee: \$35
Jul 26-Jul 30	M-F	7:30am-6:00pm	Fee: \$35
Aug 2-Aug 6	M-F	7:30am-6:00pm	Fee: \$35
Aug 9-Aug 13	M-F	7:30am-6:00pm	Fee: \$35

Summer X-Press International

Age: 6-12 yrs. Summer X-Press International provides the same high-quality experience as Summer X-Press, but with an international twist. Campers learn about countries and cultures from around the world while they discover, play, and explore together through recreational sports and games, arts and crafts, field trips, food experiences, and more. The program is staffed by caring and experienced counselors who attend more than 20 hours of training on working with school-aged participants. Activities take place indoors and outdoors, and participants should bring a lunch and two snacks each day.

Peach Road Cultural Center

Jun 14-Jun 17	M-Th	7:30am-6:00pm	Fee: \$28
Jun 21-Jun 25	M-F	7:30am-6:00pm	Fee: \$35
Jun 28-Jul 2	M-F	7:30am-6:00pm	Fee: \$35
Jul 6-Jul 9	Tu-F	7:30am-6:00pm	Fee: \$28
Jul 12-Jul 16	M-F	7:30am-6:00pm	Fee: \$35
Jul 19-Jul 23	M-F	7:30am-6:00pm	Fee: \$35
Jul 26-Jul 30	M-F	7:30am-6:00pm	Fee: \$35
Aug 2-Aug 6	M-F	7:30am-6:00pm	Fee: \$35
Aug 9-Aug 13	M-F	7:30am-6:00pm	Fee: \$35



Teen

The entire management team was professional and incredibly responsive. They greeted my teen with warmth and ended the day with smiles. The team needs to be commended for their ability to keep the teens engaged and active.

— Parent of Summer Camp Participant

Specialty Camps

EnlighTEENment

Age: 11-14 yrs. "To have fun? or not to have fun? That is the question." Join us for a week of enlighTEENment to make sure your answer is "To have fun!!!". Week of EnlighTEENment is a teen camp with a focus on education and recreation with the goal of easing your teen back into school one week at a time. Camp will have a different topic each day. Topics will be approached in a fun, creative, engaging manner and consists of arts, science and technology, outdoor recreation, nature, community service, and more! Although camp will have an educational component we will still have lots of camp fun consisting of active games, projects and other camp activities. Campers should bring two snacks, a lunch and water bottle daily. Campers will participate in indoor and outdoor activities throughout the day. Program hours are 9:00am - 5:00pm.

Marsh Creek Community Center

Aug 16-Aug 20 M-F 8:30am-5:30pm Fee: \$200

Galactic Glow Sports Camp

Age: 12-14 yrs. Galactic Glow Sports Camp is for teens who enjoy sports and fun. This camp will feature dodgeball, basketball, pickleball, wiffleball, nine square and laser tag in a glow-in-the-dark environment. This camp will also feature team competitions, STEM activities, art projects and fitness. Participants will need to bring a lunch and 2 snacks each day. For more information contact Teen Programs at 919-996-2139.

Saint Monica Teen Center

Aug 16-Aug 20 M-F 8:00am-5:30pm Fee: \$120

Girls in Motion Teen

Age: 11-13 yrs. Girls in Motion is a fun way to keep your girl active in an all-girl environment. This camp will allow participants to try out new and different sports, at an introductory level, while playing some of the all-time favorites as well. No experience is necessary in any sport as girls will focus on teambuilding, leadership, confidence, and having fun as individuals and as part of a team. We will build friendships while we encourage girls to give their all, build one another up, and to have fun as they take on new challenges and push themselves to become better players, teammates, and opponents.

Laurel Hills Community Center

Aug 16-Aug 20 M-F 8:30am-4:30pm Fee: \$145

Leaders in Training

Age: 13-15 yrs. Leaders in Training is designed to provide teenagers with an experience that promotes and develops young leaders. Teens will learn a sense of self, build life skills and understand how these shape their connections to the world today. Teambuilding, challenge programs and outdoor recreation activities will put young leaders to the test! Exposure to career and/or trade opportunities, financial literacy, career options and health & wellness opportunities will also be featured in this camp. Sign-In/Drop off is from 8:00am-8:30am and Pick-Up/Sign-Out is from 5:00-5:30pm. Participants should bring a lunch, two snacks, sunscreen and a reusable water bottle each day. Participants should dress in comfortable clothing as it relates to the daily schedule.

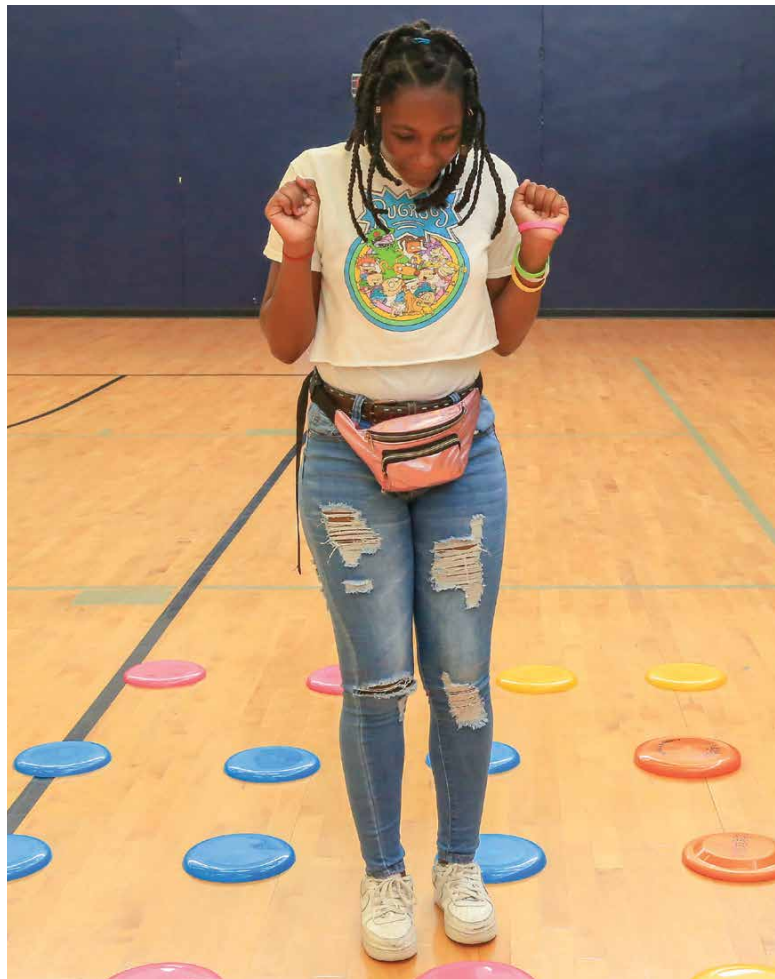
Forest Ridge Park

Jun 28-Jul 2	M-F	8:00am-5:30pm	Fee: \$185
Jul 26-Jul 30	M-F	8:00am-5:30pm	Fee: \$185

RC AERONAUTICS 1

Age: 13-15 yrs. Attention campers here's your chance to build and fly your very own remote-controlled airplane! If you're interested in airplanes, electronics, and building, then say no more! Learn how to construct an aircraft out of some household materials, hot glue, wires, and sophisticated electronics. Safely prepare for takeoff using a fun, software-based RC flight simulator. Then later, take control of your own newly constructed aircraft using a transmitter you programmed to get flying outside and above





the trees. Gain the necessary entry level skills to fly, repair, and rebuild. With staff supervision, campers will be using hot glue guns and sharp knives to construct their aircraft. And at the end, campers will take home what they've built... or crashed. Do you have the right stuff?

Dorothea Dix Park

Jul 12-Jul 23 M-F 8:30am-4:30pm Fee: \$500

Squad: Cheer and Dance Middle School Camp

Age: 11-14 yrs. Are you ready to show your spirit? Come join our cheer/dance squad! Participants will learn pom motions, jumps, leg holds, turns, high kicks, and more. Your camper will go home every day with a new understanding of the cheer/dance team world! At the end of the week we will show off all our hard work with a performance and recognize each spirit leader with a trait they exhibited throughout the week. Come join the fun and get ready to yell and sweat with the Laurel Hills Cheer/Dance Team Squad!

Powell Drive Neighborhood Center

Jul 19-Jul 23 M-F 1:30-4:30pm Fee: \$90

Teens Outdoors & Occupied!

Age: 13-15 yrs. Teens Outdoors & Occupied is designed to introduce and expose teenagers to outdoor recreation and the adventures they provide. Activities are generally always on the

go and could include paddling, cycling, hiking, survival skills, teambuilding and nature education. Leadership and life skills components are implemented to enhance this outdoor experience. Sign-In/Drop off is from 8:00am-8:30am and Pick-Up/Sign-Out is from 5:00pm-5:30pm. Participants should bring a lunch, two snacks, sunscreen and a reusable water bottle each day. Participants should dress in comfortable clothing as it relates to the daily schedule.

Forest Ridge Park

Jun 21-Jun 25	M-F	8:00am-5:30pm	Fee: \$185
Jul 12-Jul 16	M-F	8:00am-5:30pm	Fee: \$185
Jul 19-Jul 23	M-F	8:00am-5:30pm	Fee: \$185
Aug 2-Aug 6	M-F	8:00am-5:30pm	Fee: \$185

Youth Fire Academy

Age: 12-14 yrs. This camp is led by the City of Raleigh Fire Department. Participants will learn about the occupational aspects of being a fireman. Classroom and physical fitness challenge activities will include first aid, fire behavior, fire inspections, code enforcement, fire prevention, fire investigations, thermal imaging demos, basic water rescue and more. Campers will learn about a typical day at the fire station and will get to see and experience fire trucks and equipment first hand with actual firemen! Participants should bring a lunch and

two snacks each day. For more information contact Teen Programs at 919-996-2139.

Thomas G. Crowder Woodland Center

Jun 21-Jun 25	M-F	8:00am-5:00pm	Fee: \$185
Jun 28-Jul 2	M-F	8:00am-5:00pm	Fee: \$185

Traditional Camps

Teen X-Treme Camp

Age: 12-14 yrs. Teen X-treme is a high quality summer camp program specifically designed for teens ages 12-14. This program leads teens through a broad curriculum of socially interactive experiences that includes arts and crafts, indoor/outdoor recreational games, character & leadership development, and other fun activities. Participants should bring a lunch and two snacks daily. Eastgate Park will have a strong concentration of outdoor activities. The weeks of June 14th-18th and July 5th -9th, will be prorated to \$40 for \$50 a week sites and \$80 for \$100 a week sites.

Abbotts Creek Community Center

Jun 14-Jun 17	M-Th	7:30am-6:00pm	Fee: \$80
Jun 21-Jun 25	M-F	7:30am-6:00pm	Fee: \$100
Jun 28-Jul 2	M-F	7:30am-6:00pm	Fee: \$100
Jul 6-Jul 9	Tu-F	7:30am-6:00pm	Fee: \$80
Jul 12-Jul 16	M-F	7:30am-6:00pm	Fee: \$100
Jul 19-Jul 23	M-F	7:30am-6:00pm	Fee: \$100
Jul 26-Jul 30	M-F	7:30am-6:00pm	Fee: \$100
Aug 2-Aug 6	M-F	7:30am-6:00pm	Fee: \$100
Aug 9-Aug 13	M-F	7:30am-6:00pm	Fee: \$100

Biltmore Hills Community Center

Jun 14-Jun 17	M-Th	7:30am-6:00pm	Fee: \$40
Jun 21-Jun 25	M-F	7:30am-6:00pm	Fee: \$50
Jun 28-Jul 2	M-F	7:30am-6:00pm	Fee: \$50
Jul 6-Jul 9	Tu-F	7:30am-6:00pm	Fee: \$40
Jul 12-Jul 16	M-F	7:30am-6:00pm	Fee: \$50
Jul 19-Jul 23	M-F	7:30am-6:00pm	Fee: \$50
Jul 26-Jul 30	M-F	7:30am-6:00pm	Fee: \$50
Aug 2-Aug 6	M-F	7:30am-6:00pm	Fee: \$50
Aug 9-Aug 13	M-F	7:30am-6:00pm	Fee: \$50

Eastgate Neighborhood Center

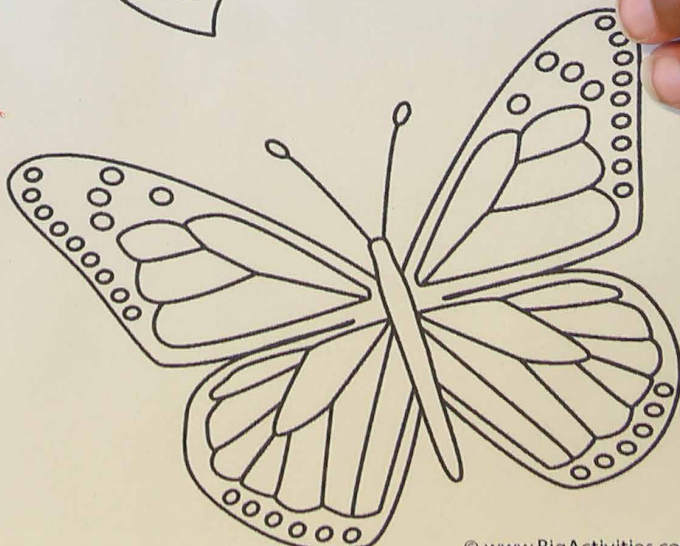
Jun 14-Jun 17	M-Th	7:30am-6:00pm	Fee: \$80
Jun 21-Jun 25	M-F	7:30am-6:00pm	Fee: \$100
Jun 28-Jul 2	M-F	7:30am-6:00pm	Fee: \$100
Jul 6-Jul 9	Tu-F	7:30am-6:00pm	Fee: \$80
Jul 12-Jul 16	M-F	7:30am-6:00pm	Fee: \$100
Jul 19-Jul 23	M-F	7:30am-6:00pm	Fee: \$100
Jul 26-Jul 30	M-F	7:30am-6:00pm	Fee: \$100
Aug 2-Aug 6	M-F	7:30am-6:00pm	Fee: \$100
Aug 9-Aug 13	M-F	7:30am-6:00pm	Fee: \$100

Marsh Creek Community Center

Jun 14-Jun 17	M-Th	7:30am-6:00pm	Fee: \$80
Jun 21-Jun 25	M-F	7:30am-6:00pm	Fee: \$100
Jun 28-Jul 2	M-F	7:30am-6:00pm	Fee: \$100
Jul 6-Jul 9	Tu-F	7:30am-6:00pm	Fee: \$80
Jul 12-Jul 16	M-F	7:30am-6:00pm	Fee: \$100
Jul 19-Jul 23	M-F	7:30am-6:00pm	Fee: \$100
Jul 26-Jul 30	M-F	7:30am-6:00pm	Fee: \$100
Aug 2-Aug 6	M-F	7:30am-6:00pm	Fee: \$100
Aug 9-Aug 13	M-F	7:30am-6:00pm	Fee: \$100

Saint Monica Teen Center

Jun 14-Jun 17	M-Th	7:30am-6:00pm	Fee: \$40
Jun 21-Jun 25	M-F	7:30am-6:00pm	Fee: \$50
Jun 28-Jul 2	M-F	7:30am-6:00pm	Fee: \$50
Jul 6-Jul 9	Tu-F	7:30am-6:00pm	Fee: \$40
Jul 12-Jul 16	M-F	7:30am-6:00pm	Fee: \$50
Jul 19-Jul 23	M-F	7:30am-6:00pm	Fee: \$50
Jul 26-Jul 30	M-F	7:30am-6:00pm	Fee: \$50
Aug 2-Aug 6	M-F	7:30am-6:00pm	Fee: \$50
Aug 9-Aug 13	M-F	7:30am-6:00pm	Fee: \$50



Specialized Recreation

My sons doctor recommended this type camp for my son and specifically mentioned Raleigh Parks and Rec. I found Camp Friendly when I googled it. I am so glad we found it!!

— Parent of Summer Camp Participant

The following camps are community-based recreation programs specifically designed to provide recreation and leisure opportunities in the least restrictive environment for individuals with disabilities in a camp environment that is safe, fun, allows independence, and enhances quality of life. Camp fees are \$150 per week for city residents and \$165 for non-residents. Camp will not run on Monday, July 5th - camp fees will be pro-rated to \$120 for city residents and \$135 for non-residents for all sessions. All participants should bring the following labeled items daily: lunch, 2 snacks, water bottle and a full change of clothes.

Due to changing operational guidelines and Eligibility Requirements, staff may not be able to provide specific supports as outlined in the camp descriptions. Please visit our webpage or contact us directly for the most current information.

To allow time to complete our assessment process, registration for all weeks of Camp Friendly and Camp Exploration will close on May 7, 2021. All campers must complete the following components of our assessment process as a final step to complete the registration process.

- Families will receive additional forms that must be completed and returned.

**All camper forms must be completed and returned no later than 3 weeks prior to the camper's first day of camp.*

- Camp Supervisors will review the information and schedule a follow up interview with the participant/family. Camp Supervisors may

determine the most appropriate format to conduct the interview (live in-person for new participants and virtual/phone for returning campers). Interviews are part of our assessment process and allow us the opportunity to learn more about the camper while providing a forum where we can provide answers and follow-up to more specific questions.

**All interviews must occur at least 2 weeks prior to the camper's first day of camp.*

Any paperwork not received or interviews not completed by the appropriate deadline will forfeit the camper's space at camp, at which time a full refund will be given.

After completing the assessment process above, if it is determined by either the family or the Camp Supervisor, that Camp Friendly/Exploration is not suitable for the camper based on our operational guidelines and supports available, we will grant a full refund for the weeks in which the camper is registered.

Please visit our website at www.raleighnc.gov and search "Specialized Recreation and Inclusion Services." Navigate to the Summer Camps tab for the most current information.

If you would like to speak with us further before beginning the registration process please contact Specialized Recreation at 919-996-2147 and we will be happy to answer any questions you may have regarding the camp programs and registration process.



Camp Exploration Day Session

Age: 15-21 yrs. The Day Session is for campers with disabilities who can engage in a small group setting (approximately 6 campers with 2 staff). Hours of operation are 8:00am-5:00pm with a curriculum day of 9:00am-4:00pm. Activities include games, nature, music and movement, arts and crafts and weekly specialist visits. Under normal camp guidelines and operations, the following are examples of how staff and campers will engage at camp.

Behavior: Staff will provide positive behavior support, redirection, preferred activities, and use behavior support strategies provided by families. Campers are expected to exhibit appropriate camp behavior, without presenting a safety concern to themselves, other campers or staff. Unsafe behaviors may include but are not limited to: biting, hitting, kicking, pinching, running, spitting, etc.

Feeding: Staff will provide verbal and visual prompting, reminders, assist with placement of food, break up food into small pieces, open containers for the camper. Campers should be able to physically feed themselves.

Participation: Staff will engage campers through multiple means of instruction, sensory engagement, supported transitions, and program modifications. Campers are expected to stay with their group, follow given/modeled direction, and demonstrate engagement during camp activities, during transitions, and in the community on field trips.

Toileting & Personal Care: staff will provide verbal and visual prompting and provide occasional assistance with pulling up and/or changing clothing. Campers should be able to clean/wipe themselves independently or with minimal/prompting from staff. Please contact 919-996-2147 for more information.

Five Points Center

Jun 14-Jun 18	M-F	8:00am-5:00pm
Jun 21-Jun 25	M-F	8:00am-5:00pm
Jun 28-Jul 2	M-F	8:00am-5:00pm
Jul 6-Jul 9	Tu-F	8:00am-5:00pm
Jul 12-Jul 16	M-F	8:00am-5:00pm
Jul 19-Jul 23	M-F	8:00am-5:00pm
Jul 26-Jul 30	M-F	8:00am-5:00pm
Aug 2-Aug 6	M-F	8:00am-5:00pm
Aug 9-Aug 13	M-F	8:00am-5:00pm

Camp Exploration Personal Assistant Session

Age: 15-21 yrs. The Personal Assistant Session is for campers who plan to provide their own personal assistant for more significant needs, beyond the scope of the Day Session for behavior, feeding, mobility, participation or personal care & toileting. Families must provide their own personal assistant and register for the Personal Assistant Session. Campers will be included with other Day Session campers in small groups and engaged in program activities by staff, while the Personal Assistant remains with the camper & group throughout the camp day to provide appropriate support as needed. Activities include games, nature, music and movement, arts and crafts and weekly specialist visits. Camp hours of operation are 8:00am-5:00pm with a curriculum day of 9:00am-4:00pm. The City of Raleigh Parks, Recreation and Cultural Resources Department Personal Assistant Policy requires paperwork to be submitted by the Personal Assistant and approved prior to attending the program. These forms must be submitted no less than 2 weeks prior to the Personal Assistant attending camp. If forms are not submitted by the appropriate deadline or if the Personal Assistant does not complete the online process, forms will not be processed in

time and the Personal Assistant may not be authorized to attend camp. If necessary, the family will be provided a full refund. Please contact 919.996.2147 for more information.

Five Points Center

Jun 14-Jun 18	M-F	8:00am-5:00pm
Jun 21-Jun 25	M-F	8:00am-5:00pm
Jun 28-Jul 2	M-F	8:00am-5:00pm
Jul 6-Jul 9	Tu-F	8:00am-5:00pm
Jul 12-Jul 16	M-F	8:00am-5:00pm
Jul 19-Jul 23	M-F	8:00am-5:00pm
Jul 26-Jul 30	M-F	8:00am-5:00pm
Aug 2-Aug 6	M-F	8:00am-5:00pm
Aug 9-Aug 13	M-F	8:00am-5:00pm

Camp Friendly Day Session

Age: 6-14 yrs. The Day Session is for campers with disabilities who can engage in a small group setting (approximately 6-8 campers with 2-3 staff). Hours of operation are 8:00am-5:00pm with a curriculum day of 9:00am-4:00pm. Activities include games, nature, music and movement, arts and crafts and weekly specialist visits. Under normal camp guidelines and operations, the following are examples of how staff and campers will engage at camp.

Behavior: Staff will provide positive behavior support, redirection, preferred activities, and use behavior support strategies provided by families. Campers are expected to exhibit appropriate camp behavior, without presenting a safety concern to themselves, other campers or staff.

Feeding: Staff will provide verbal and visual prompting, reminders, assist with placement of food, break up food into small pieces, open containers for the camper. Campers should be able to physically feed themselves.

Participation: Staff will engage campers through multiple means of instruction, sensory engagement, supported transitions, and program modifications. Campers are expected to stay with their group, follow given/modeled direction, and demonstrate engagement during camp activities, during transitions, and in the community on field trips.

Toileting & Personal Care: Staff will provide verbal and visual prompting, assist camper with pull-up/diaper and/or clothing. Campers should be able to clean/wipe themselves with minimal assistance from staff. Contact 919-996-2147 for more information.

Carolina Pines Community Center

Jun 14-Jun 18	M-F	8:00am-5:00pm
Jun 21-Jun 25	M-F	8:00am-5:00pm
Jun 28-Jul 2	M-F	8:00am-5:00pm
Jul 6-Jul 9	Tu-F	8:00am-5:00pm
Jul 12-Jul 16	M-F	8:00am-5:00pm
Jul 19-Jul 23	M-F	8:00am-5:00pm
Jul 26-Jul 30	M-F	8:00am-5:00pm
Aug 2-Aug 6	M-F	8:00am-5:00pm
Aug 9-Aug 13	M-F	8:00am-5:00pm


Durant Nature Preserve

Jun 14-Jun 18	M-F	8:00am-5:00pm
Jun 21-Jun 25	M-F	8:00am-5:00pm
Jun 28-Jul 2	M-F	8:00am-5:00pm
Jul 6-Jul 9	Tu-F	8:00am-5:00pm
Jul 12-Jul 16	M-F	8:00am-5:00pm

Jul 19-Jul 23	M-F	8:00am-5:00pm
Jul 26-Jul 30	M-F	8:00am-5:00pm
Aug 2-Aug 6	M-F	8:00am-5:00pm
Aug 9-Aug 13	M-F	8:00am-5:00pm
Pullen Community Center		
Jun 14-Jun 18	M-F	8:00am-5:00pm
Jun 21-Jun 25	M-F	8:00am-5:00pm
Jun 28-Jul 2	M-F	8:00am-5:00pm
Jul 6-Jul 9	Tu-F	8:00am-5:00pm
Jul 12-Jul 16	M-F	8:00am-5:00pm
Jul 19-Jul 23	M-F	8:00am-5:00pm
Jul 26-Jul 30	M-F	8:00am-5:00pm
Aug 2-Aug 6	M-F	8:00am-5:00pm
Aug 9-Aug 13	M-F	8:00am-5:00pm

Camp Friendly Personal Assistant Session

Age: 6-14 yrs. The Personal Assistant Session is for campers who plan to provide their own personal assistant for more significant needs, beyond the scope of the Day Session for behavior, feeding, mobility, participation or personal care & toileting. Families must provide their own personal assistant and register for the Personal Assistant Session. Campers will be included with other Day Session campers in small groups and engaged in program activities by staff, while the Personal Assistant remains with the camper & group throughout the camp day to provide appropriate support as needed. Activities include games, nature, music and movement, arts and crafts and weekly specialist visits. Camp hours of operation are 8:00am-5:00pm with a curriculum day

 **NO BARCODES NEEDED!**
 In our new registration system, you will be able to easily search by the name of the camp.

of 9:00am-4:00pm. The City of Raleigh Parks, Recreation and Cultural Resources Department Personal Assistant Policy requires paperwork to be submitted by the Personal Assistant and approved prior to attending the program. These forms must be submitted no less than 2 weeks prior to the Personal Assistant attending camp. If forms are not submitted by the appropriate deadline or if the Personal Assistant does not complete the online process, forms will not be processed in time and the Personal Assistant may not be authorized to attend camp. If necessary, the family will be provided a full refund. Contact 919-996-2147 for more information.

Carolina Pines Community Center

Jun 14-Jun 18	M-F	8:00am-5:00pm
Jun 21-Jun 25	M-F	8:00am-5:00pm
Jun 28-Jul 2	M-F	8:00am-5:00pm
Jul 6-Jul 9	Tu-F	8:00am-5:00pm
Jul 12-Jul 16	M-F	8:00am-5:00pm
Jul 19-Jul 23	M-F	8:00am-5:00pm
Jul 26-Jul 30	M-F	8:00am-5:00pm
Aug 2-Aug 6	M-F	8:00am-5:00pm
Aug 9-Aug 13	M-F	8:00am-5:00pm

Durant Nature Preserve

Jun 14-Jun 18	M-F	8:00am-5:00pm
Jun 21-Jun 25	M-F	8:00am-5:00pm
Jun 28-Jul 2	M-F	8:00am-5:00pm
Jul 6-Jul 9	Tu-F	8:00am-5:00pm
Jul 12-Jul 16	M-F	8:00am-5:00pm
Jul 19-Jul 23	M-F	8:00am-5:00pm
Jul 26-Jul 30	M-F	8:00am-5:00pm
Aug 2-Aug 6	M-F	8:00am-5:00pm
Aug 9-Aug 13	M-F	8:00am-5:00pm

Pullen Community Center

Jun 14-Jun 18	M-F	8:00am-5:00pm
Jun 21-Jun 25	M-F	8:00am-5:00pm
Jun 28-Jul 2	M-F	8:00am-5:00pm
Jul 6-Jul 9	Tu-F	8:00am-5:00pm
Jul 12-Jul 16	M-F	8:00am-5:00pm
Jul 19-Jul 23	M-F	8:00am-5:00pm
Jul 26-Jul 30	M-F	8:00am-5:00pm
Aug 2-Aug 6	M-F	8:00am-5:00pm
Aug 9-Aug 13	M-F	8:00am-5:00pm



2021 Camp Policies

Age Verification

The City of Raleigh Parks, Recreation, and Cultural Resources Department strives to provide age-appropriate curriculum and programming for all recreation services delivered. To meet this goal, the age of the participant, as of the cut-off date for the program, is required at the time of registration to appropriately place the participant in our programs. The Parks, Recreation and Cultural Resources Department reserves the right to request that the parent/guardian provide a legal document (i.e. birth certificate) verifying the age of the participant, as of August 1st of this year that was denoted on the registration form. If legal documentation is requested and not provided within 24 hours, the program supervisor may offer the parent/guardian a transfer to an age-appropriate program if available or dismiss the participant from the program. The parent/guardian will be responsible for any difference in fee if a transfer occurs. No refund will be given if the participant is dismissed from the program.

Babysitting

Any babysitting arrangements with present or former staff of the Raleigh Parks, Recreation, and Cultural Resources Department are separate and independent from any Departmental program. These arrangements must be based on the independent responsibility and judgment of the parent/guardian. The City of Raleigh Parks, Recreation, and Cultural Resources Department shall not be responsible for any claims or liability in connection with such babysitting activities.

Behavior Management

We utilize and encourage the practice of praise and positive reinforcement as effective methods of behavior management. We believe that when participants receive positive and understanding interactions, they can develop good self-concept, problem-solving abilities, and self-discipline. Our programs will create an environment that encourages positive choices through understanding participant's basic needs and explaining program expectations.

The City of Raleigh Parks and Recreation Department supports and practices the following Behavior Management practices:

- Positive Reinforcement-providing participants a positive program environment.
 - Redirection-stop the undesired behavior and redirect participant to make a positive choice.
 - Time Out -Provide an opportunity for discussion between staff and the participant by asking questions about the behavior.
- When positive choices are not made by the participants, the following procedures will be followed:
1. Initially, participants will be given a reminder of behavior expectations and the opportunity to make positive choices.
 2. If the behavior persists after a verbal warning will be provided. In conjunction, a Behavior Action Plan will be developed and implemented to identify specific behaviors that require improvement. PROR staff will work with the participant and parent/guardian to develop appropriate behavior management solutions.
 3. If behavior problems continue after implementation of the Behavior Action Plan, a first Behavior Incident Report will be presented to the parent/guardian.
 4. Additional behavior problems will constitute a second Behavior Incident Report presented to the parent/guardian and a possible two (2) full-day suspension from the program may occur. The parent/guardian may be requested to pick up the participant within an hour of the initial contact with the parent/guardian. If a parent/guardian does not pick up the participant within an hour, a late fee may be charged.
 5. If a behavior problem persists, a third Behavior Incident Report will be presented, and the participant may be asked to leave the program. A two (2) full day suspension will be issued to the participant while the behavior incident reports are being reviewed.
 6. For severe offenses, such as but not limited to: fighting/hitting, theft, vandalism, bullying in program or through social media, possession of weapons or drugs, severe verbal threats, sexual misconduct, leaving the program/building without proper dismissal, or any other safety-related behavior, the participant may be suspended or dismissed from the program immediately.
 7. Refunds will not be available for program participants who have been suspended from camp because of behavior issues.

2021 Camp Policies

8. Participants will not be disciplined in camp for behavior that occurred outside of camp hours, even at parental requests.
9. Participation in camp activities during program hours is required.

Confidentiality

Raleigh Parks, Recreation, and Cultural Resources Department staff will not discuss confidential matters or personal information with anyone outside of the Department or with unauthorized individuals.

All participants are encouraged to respect the confidentiality of other participants by not disclosing personal information on social media such as Facebook, Twitter, etc. Departmental staff are not permitted to share personal information or pictures about any participants or staff with social media such as Facebook, Twitter, Instagram, SnapChat etc. or discuss any personal information about participants outside of the workplace.

Dress Code

Participants should wear cool, comfortable clothing and athletic shoes in order to participate in recreational or athletic activities each day. Due to active play, swimsuits should provide full coverage, such as one-piece bathing suits or board shorts/shirts. If appropriate attire is not worn, therefore preventing participation, the parent/guardian may be asked to bring appropriate clothing or will be required to pick up the participant. Certain programs may have additional clothing requirements.

Unacceptable attire: sandals or flip-flops; shirts with spaghetti straps; clothing that displays drugs, alcohol, tobacco, sexual, or gang references; bikinis or speedo briefs; excessively loose pants or shirts; revealing clothing; jewelry; Crocs™. Certain camps may allow exceptions to this list.

Electronic Devices/Items from Home

No electronic devices are permitted at camp programs (examples: cell phones, gaming/music devices, etc.) unless accommodations have been made for the participant through a Support Plan. Staff reserves the right to confiscate electronic devices if issues arise.

Participants may have the opportunity to bring in items (toys, books, etc.) from home. Should you choose to allow your participant to bring in items from home the City of Raleigh Parks, Recreation and Cultural Resources Department does not assume any responsibility for lost, stolen, broken or confiscated items.

Departmental staff reserves the right to confiscate any item that is not appropriate or may be used in an inappropriate manner while in our program.

Items that are not appropriate include, but are not limited to:

- Any type of weapon (toy guns, knives, swords, including anything that can be used to approximate a weapon by the participant).
- Any item that can be used to harass or intimidate another participant.
- Any item that causes disruption to scheduled activities
- Confiscated items will be returned to the parent/guardian at the end of the day.

Field Trips

Raleigh Parks, Recreation, and Cultural Resources will transport participants offsite in vehicles provided by or contracted by the City of Raleigh. If a program participant arrives at the program after the scheduled departure for a field trip, it is the responsibility of the parent/guardian to either:

- Transport the participant to the field trip location and sign-in the participant with a City of Raleigh program staff member at the field trip site, or;
- Transport the participant to the program site once the program returns from the field trip location and sign-in.

Buses will leave the program location at the advertised scheduled time. Departure times will not be altered to accommodate participants arriving late to the program site.

Participants will not be permitted to be dropped off at the program site while the camp program is off-site on a field trip. Refunds will not be awarded if participant misses a field trip. The City of Raleigh Parks, Recreation, and Cultural Resources Department does not accept responsibility for a program participant until they are signed in with program staff.

If a parent/guardian needs to pick up a participant early while still off-site on a field trip, it is the responsibility of the parent/guardian to pick up the participant at the field trip location. Recognizing emergency situations may occur, it is requested that the camp staff be informed of the need to pick up the program participant prior to the departure from the program site to the field trip.

Camp Policies continued to page 34 —

2021 Camp Policies

2021 Camp Policies continued —

Food

- Parent/Guardians should review camp descriptions for lunch, snack and drink requirements. Refrigerators and microwaves are not available for campers to use.
- Participants are not permitted to share lunches or snacks.
- Siblings should bring separate lunch containers for their individual lunches.
- Vending machines will not be available for purchasing drinks or snacks during program hours.
- Any food brought into any program to be served to all participants must be store-bought with labeled ingredient information. Due to allergy concerns, homemade food items will not be accepted into our programs to be served to participants. Parent/Guardians should notify camp supervisor at least 24 hours in advance if food will be brought into camp.
- Parent/Guardians should notify the camp staff of a child's food allergies or dietary restrictions and discuss possible accommodations.

Illness/Injury

Any participant should remain home from all programs if they have had any of the following in the past twenty-four (24) hours:

- Fever (100 degrees or higher without fever-reducing medication), diarrhea, vomiting, sore throat, undiagnosed rash, chicken pox, pink eye, ring worm, head lice, or any other potentially contagious condition.
- Physical injury that does not allow the participant to safely participate in program activities.
- If a participant demonstrates any of the above while at the program, the parent/guardian will have one hour to pick up the participant from the program location.
- If the participant becomes sick while at the program, he/she will be separated from the other participants while the parent/guardian is called to come and pick them up. After 24 hours, if the participant is symptom-free or written documentation has been received from a doctor stating the participant is not contagious or can safely participate, they may return to the program. If you suspect that your participant has a

contagious condition that may be spread to others, please notify your Camp Director as soon as possible. Please do not bring the participant back to the program until the program director has been contacted.

The above criteria apply to all participants, as well as those with Inclusion Plans or other accommodations.

Inclusion and Medical Support

In accordance with the Americans with Disabilities Act (ADA), Raleigh Parks, Recreation and Cultural Resources provides support to participants with disabilities and/or medical conditions who request a program modification. Participants who indicate a disability or medical condition AND request an accommodation will be contacted by Inclusion Services for follow-up. Those who do NOT request an accommodation will not be contacted by Inclusion Services.

Support plans are designed to be individualized based upon the participant's specific condition and the program(s) they register for. Additional forms are required from the parent/guardian and may require a physician's signature for specific medical support requests.

The accommodation/support request should be received at least two weeks prior to the start date of the program, so we can ensure appropriate supports are in place. The medical support process may take extended time for physician signatures, specialized training etc., so we suggest more advanced notice if possible. Please contact Inclusion Services at 919.996.2147 for more information or to request support.

Late Pick-up

Participants that are picked up after the closing time of the program will be charged a late fee. The fee is as follows: Once the parent/guardian is up to ten minutes late a \$5 fee will be charged per family. An additional \$1 per family will be added for every minute past ten minutes late. Payment is due at the time of late pick-up. Continual late pickups may lead to dismissal from the program in relation to excessive late pick-up policy forms.

Lost/Stolen Items

The City of Raleigh Parks, Recreation and Cultural Resources Department is not responsible for any personal items lost or stolen at our programs.

2021 Camp Policies

Medication

When possible, participants should take medications outside of program hours. Parents/Guardians should notify the program staff of any medication, to include prescription and over the counter, that may be administered during program hours and a PRCR medication form will need to be completed for each medication.

Movies

Movies may be shown while participants are in Raleigh Parks, Recreation, and Cultural Resources Programs. Before movies are shown, the title of the movie will be communicated to parent/guardians.

Participant Release

The Security Key Tag Identification Process is in place to properly identify individuals that have the parent/legal guardian's permission to sign-out a participant from the camp program. Legal guardians and other individuals listed on the participant form as an authorized pick-up person will be issued a security tag by showing a photo ID. A parent/guardian will not be issued multiple key tags to be given to other individuals authorized to pick up the participant. All authorized persons must be prepared to show a legal form of identification, such as a key tag and/or photo ID, each time a participant is released to their custody.

Before the program begins parent/guardians should inform staff of any changes to the pick-up list by contacting the Recreation Business Office at 919-996-4800.

Any person listed as a parent/guardian on the registration form may add or remove additional person(s) to the authorized pick up list. Parents and guardians should contact the Registration Business Office at 919-996-4800 or camp.registration@raleighnc.gov to change information. Parents/guardians should inform anyone picking up a participant without a key tag that they will be required to show legal photo identification (e.g. school or work badge, driver's license).

The Raleigh Parks, Recreation and Cultural Resources Department recognizes that anyone listed as a parent/guardian on the registration form has equal access to their child in our programs. Should a parent/guardian desire to restrict access by the other, he/she shall be required to provide legal documentation authorizing. PRCR staff reserves the right to validate the appropriateness and authority of the documentation

provided. Understanding the sensitivity of each instance, it may be necessary for PRCR staff to contact each of the parent/guardians involved in the legal proceedings to inform of the action being taken and/or obtain additional information.

Payment

If the required payment is not provided with the registration forms, the participant's registration will not be processed. We will attempt to notify you by telephone or email and you will have until the end of following business day to remit payment.

Personal Care

The City of Raleigh Parks, Recreation, and Cultural Resources Department does not provide personal care for program participants, unless otherwise stated in the program description or as indicated in an individual participant's inclusion/medical support plan. Raleigh Parks, Recreation, and Cultural Resources staff does not assist in the toileting of any program participants or help with dressing participants. The Department requires that all program participants are independent for toileting and personal care in order to participate. Program participants must be able to change their own clothing if soiled. Raleigh Parks, Recreation, and Cultural Resources staff is not permitted to change program participant's soiled clothing.

If a toileting accident does occur, a change of clothes must be brought to the program site or the participant must be picked up from the program site within one hour of the incident. If toileting accidents are frequent, participants may be dismissed from the program.

Sunscreen and Insect Repellent

If needed, the parent/guardian should apply these products to participants before they come to the program each day. Please supply any sunscreen and/or insect repellent that the participant may need during any program. Staff will provide frequent opportunities for participants to reapply over the course of the day. Staff or siblings may assist participants in applying sunscreen only to exposed skin that the participant cannot reach on their own. Spray or mist type sunscreen and/or insect repellent are recommended. These products are not to be shared with other campers. Participants in Specialized Recreation camps may be assisted in applying sunscreen and/or insect repellent, as provided and directed by the parent/guardian.

Camp Policies continued to page 36 —

2021 Camp Policies

2021 Camp Policies continued —

Swimming Information (for applicable camps)

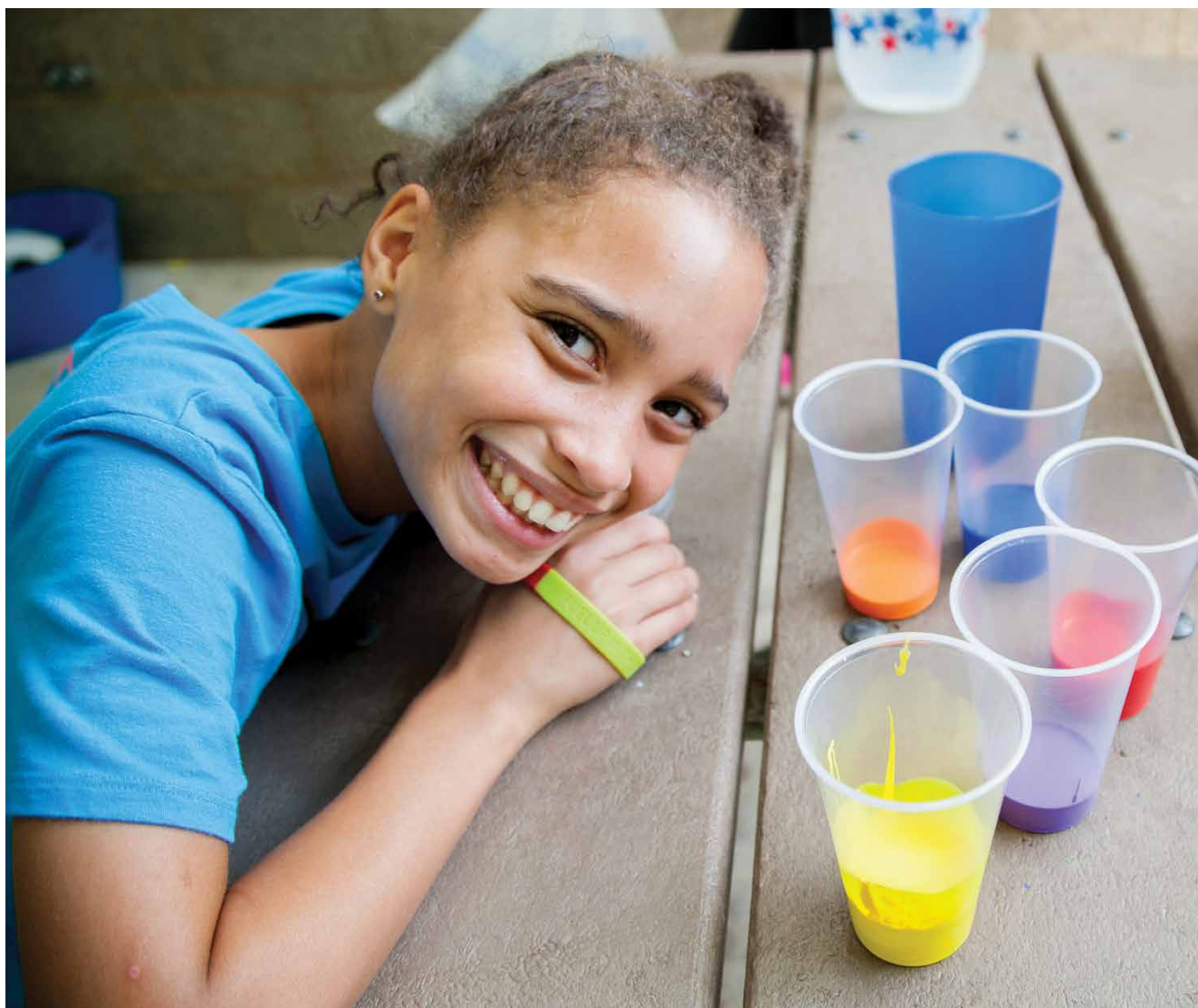
Raleigh Parks, Recreation, and Cultural Resources staff conduct swim tests for all program participants and issue lifejackets to non-swimmers. To swim without a lifejacket, a swimmer must be able to swim one length of the pool (approximately 25 yds. or 75 ft.) on their front and tread water for 30 seconds. All non-swimmers will be required to wear a lifejacket or parents/guardians can request that staff not allow the participant to participate in the swim test and automatically place the participant in a lifejacket. Staff reserves the right to place a participant in a life jacket in the interest of a participant's safety. All participants, regardless of swimming ability, will wear lifejackets when participating in water activities including swimming in lakes, rivers, or the ocean.

Waitlist Notification

If your participant clears the waitlist, you will be notified by telephone and/or email. You will have until the end of the following business day to accept and remit payment for the requested program. Your acceptance must be confirmed in writing. If notification is not received with the specified time frame you will forfeit your participant's placement.

Withdrawal and Transfers

All withdrawals and transfers must be received in writing 14 days or more in advance of the start date of the program. Non-attendance or non-participation in a program does not entitle a patron to a credit of the registration fee.





Donate to Financial Assistance Fund

Together we connect and enrich our community through exceptional experiences



Play It Forward Financial Assistance Fund

Throughout the past 25 years the Parks, Recreation, and Cultural Resources Department has provided assistance to families and individuals who desire to participate in departmental programs but for financial reasons cannot always afford to. From 1993, when the department held its first employee auction to help raise funds for this purpose, to today, the fund has helped over 7,500 individuals in Raleigh and the surrounding communities to participate in recreation programs that encourage healthy lifestyles, promote self-confidence and teach life-long lessons. Assistance is awarded based on financial need and is offered to support all who wish to participate in our programs.

To make a tax-deductible donation, please mail a completed form to:

City Of Raleigh

Financial Assistance Program – 6107
P.O. Box 590 Raleigh, NC 27602
City of Raleigh tax ID number: 56-6000236

Play It Forward Scholarship Fund

BY CHECK

☐ Yes, we/I would like to help by donating to the Financial Assistance Scholarship Fund.

Please accept my gift of: ☐ \$10 ☐ \$20 ☐ \$50 ☐ Other _____

☐ My check is enclosed (Payable to the City of Raleigh and Tax Deductible)

Name(s): _____

Phone: _____

Address: _____

City: _____ State: _____ Zip: _____

ONLINE

To make a tax-deductible donation online, visit parks.raleighnc.gov and search "Play It Forward".

Summer Camp Locations

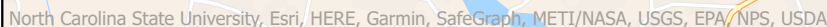
City of Raleigh Facilities

1	Abbotts Creek 9950 Durant Road 27614	919-996-2770
2	Barwell Road Community Center 5857 Barwell Park Drive 27610	919-996-5994
3	Biltmore Hills Community Center 2615 Fitzgerald Drive 27610	919-831-6895
5	Brier Creek Community Center 18010 Globe Road 27617	919-420-2340
6	Carolina Pines Community Center 2305 Lake Wheeler Road 27603	919-831-6435
7	Chavis Community Center "John Chavis Park" 505 Martin Luther King Jr. Boulevard 27601	919-831-6989
8N	Durant Nature Preserve North 8305 Camp Durant Road 27615 Camp Friendly	919-996-2147
9	Eastgate Park 4200 Quail Hollow Drive 27609	919-996-2139
41	Fred Fletcher Park 820 Clay Street 27605	919-996-6833
10	Glen Eden Park c/o Jaycee Park 1500 Glen Eden Drive 27612	919-996-6833
11	Green Road Community Center 4201 Green Road 27604	919-872-4140
12	Greystone Community Center 7713-55 Leadmine Road 27615	919-996-4848
13	Halifax Community Center 1023 Halifax Street 27604	919-996-6378
14	Hill Street Center 2307 Hill Street 27604	919-996-5300
15	Jaycee Community Center 2405 Wade Avenue 27607	919-996-6833
16	Kiwanis Park 2525 Noble Road 27608	919-996-3135
17	Lake Lynn Community Center 7921 Ray Road 27613	919-996-2911
18	Laurel Hills Community Center 3808 Edwards Mill Road 27612	919-420-2383
19	Lions Park 516 Dennis Avenue 27604	919-996-4726
20	Marsh Creek Park 3050 New Hope Road 27604	919-996-4920
21	Method Road Community Center 514 Method Road 27607	919-996-6066
22	Millbrook Exchange Community Center 1905 Spring Forest Road 27615	919-996-4156
24	Optimist Community Center 5900 Whittier Drive 27609	919-870-2880

25	Peach Road 911 Illegnes Road 27603	919-807-8545
26	Powell Drive Park 740 Powell Drive 27606 Nature Camps	919-996-6066 919-996-2117
27	Pullen Community Center 408 Ashe Avenue 27607	919-831-6052
28	Raleigh City Museum 220 Fayetteville Street, 27601	919-996-2220
29	Ralph Campbell Community Center 756 Lunar Drive 27610	919-250-2757
30	Roberts Park Community Center 1300 E. Martin Street 27610	919-831-6830
31	St. Monica Teen Center 15 N. Tarboro Street 27601	919-996-4770
32	Sanderford Road Park 2623 Sanderford Road 27610	919-831-1898
33	Sgt. Courtney T. Johnson Center "Southgate" 1801 Proctor Road 27610	919-831-6719
34	Tarboro Road Community Center 121 N. Tarboro Street 27610	919-831-6505
35	Walnut Creek Wetland Center 950 Peterson Street 27610	919-996-2760
36	Worthdale Community Center 1001 Cooper Road 27610	919-996-2730

Non-City-Owned Sites

37	Hilburn Academy 7100 Hilburn Drive 27613	919-996-6165
39	Ravenscroft School 7409 Falls of Neuse Road 27615	919-996-6165
40	Underwood Elementary 1614 Glenwood Avenue 27608	919-996-6165



C

1

4

Miles

2/1/2021

Prepared by City of Raleigh PRCR GIS



City of Raleigh
Parks, Recreation and Cultural Resources
P.O. Box 590 Raleigh, NC 27602
PRCR 6501

PRSRT STD
US Postage
PAID
Raleigh, NC
Permit No.813

You are never too old for **Camp!**



Visit parks.raleighnc.gov for Summer Camp Job Opportunities



[Instagram.com/
raleighparks](https://www.instagram.com/raleighparks)



[YouTube.com/
raleighparksandrec](https://www.youtube.com/raleighparksandrec)



[@raleighparks](https://twitter.com/raleighparks)



[pinterest.com/
raleighparks](https://www.pinterest.com/raleighparks)



[facebook.com/
raleighparks](https://www.facebook.com/raleighparks)