

TARBORO ROAD PARK PROJECT

The Tarboro Road Park Project aligns with the City of Raleigh's vision to transform the site into a vibrant community asset, providing versatile spaces capable of hosting a wide range of recreational activities. This redevelopment is made possible by the \$29.3 Million from the 2022 Raleigh Parks Bond.

The new two-story 21,000 SF community center is strategically positioned on the eastern side of the site to maintain visibility and access to the central park amenities. To the west, a new parking area and sports court will serve as a buffer, separating recreational activities from the neighboring residential area. The playground, situated at the heart of the site, will allow for City staff supervision, ensuring a safe and enjoyable environment. A hardscaped plaza will be developed between the new center and the St. Monica Teen Center, providing a shared gathering area with safe pedestrian access between the two facilities. The connection, referred to as the "past to present promenade", will allow for opportunities to incorporate public art and tell the rich history of the neighborhood.

Additionally, direct pedestrian pathways from Tarboro Street and the new Bus Rapid Transit stop along Edenton Street will lead to the community center entrance. Covered porch opportunities are provided along the center's frontage to the park, offering sheltered outdoor gathering spaces and integrating the building with the surrounding park amenities.

This historic St. Monica Teen Center will receive renovations focused primarily on interior upgrades. This modernization effort aims to enhance the building's functionality and long-term efficiency while supporting the overall redevelopment goals for the Tarboro Road Park site.

PROJECT SCHEDULE

Open House / Schematic Design Phase	June 26, 2025 (5 - 7PM)
Design Development Phase	Fall 2025
Construction Document Phase	Spring 2026
Construction Phase	Spring 2027
Completion	Early - Mid 2029

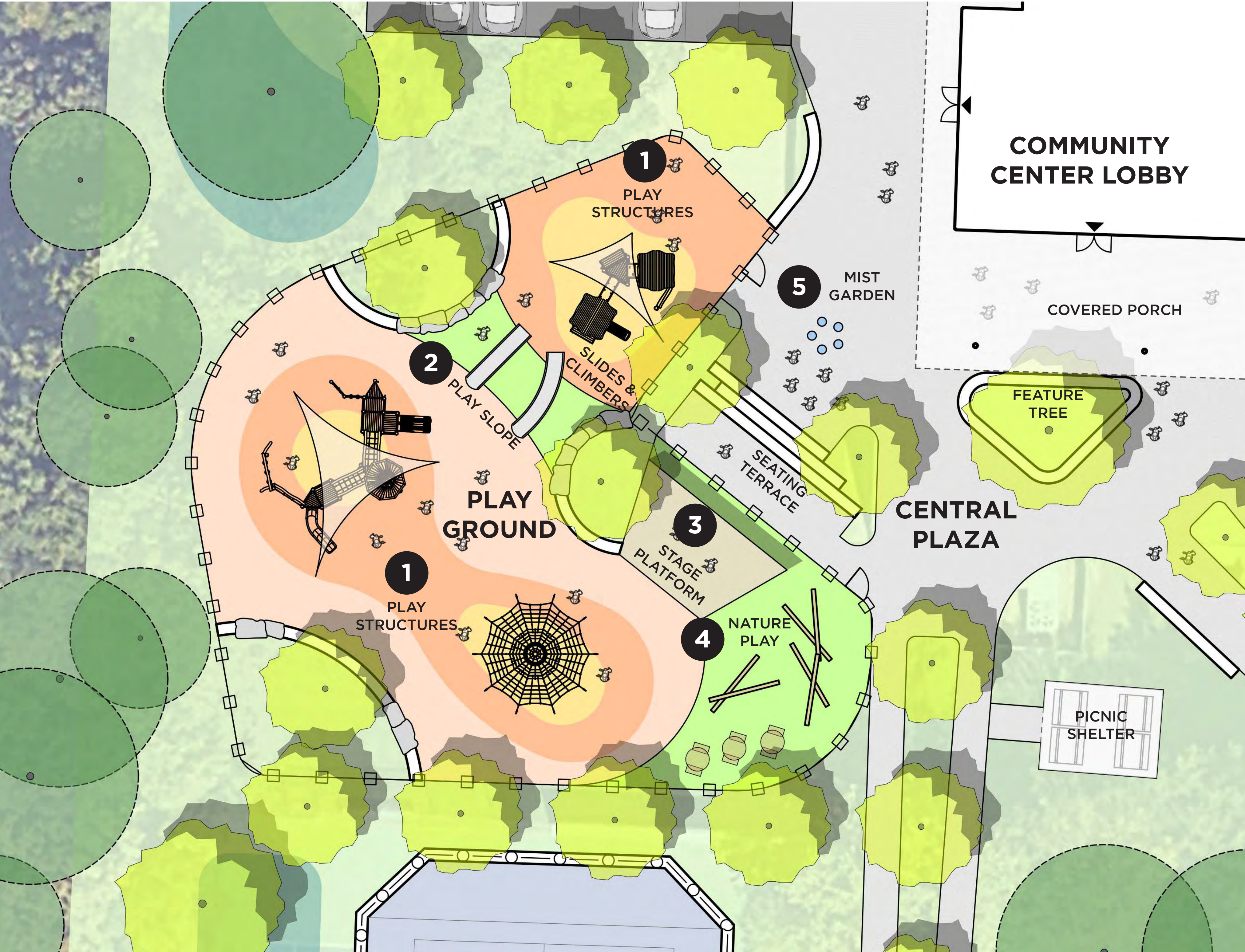


TARBORO ROAD PARK OVERALL PLAN



“HEART” OF THE PARK

ENLARGED PLAN



1 PLAY STRUCTURES



2 PLAY SLOPE



3 STAGE PLATFORM

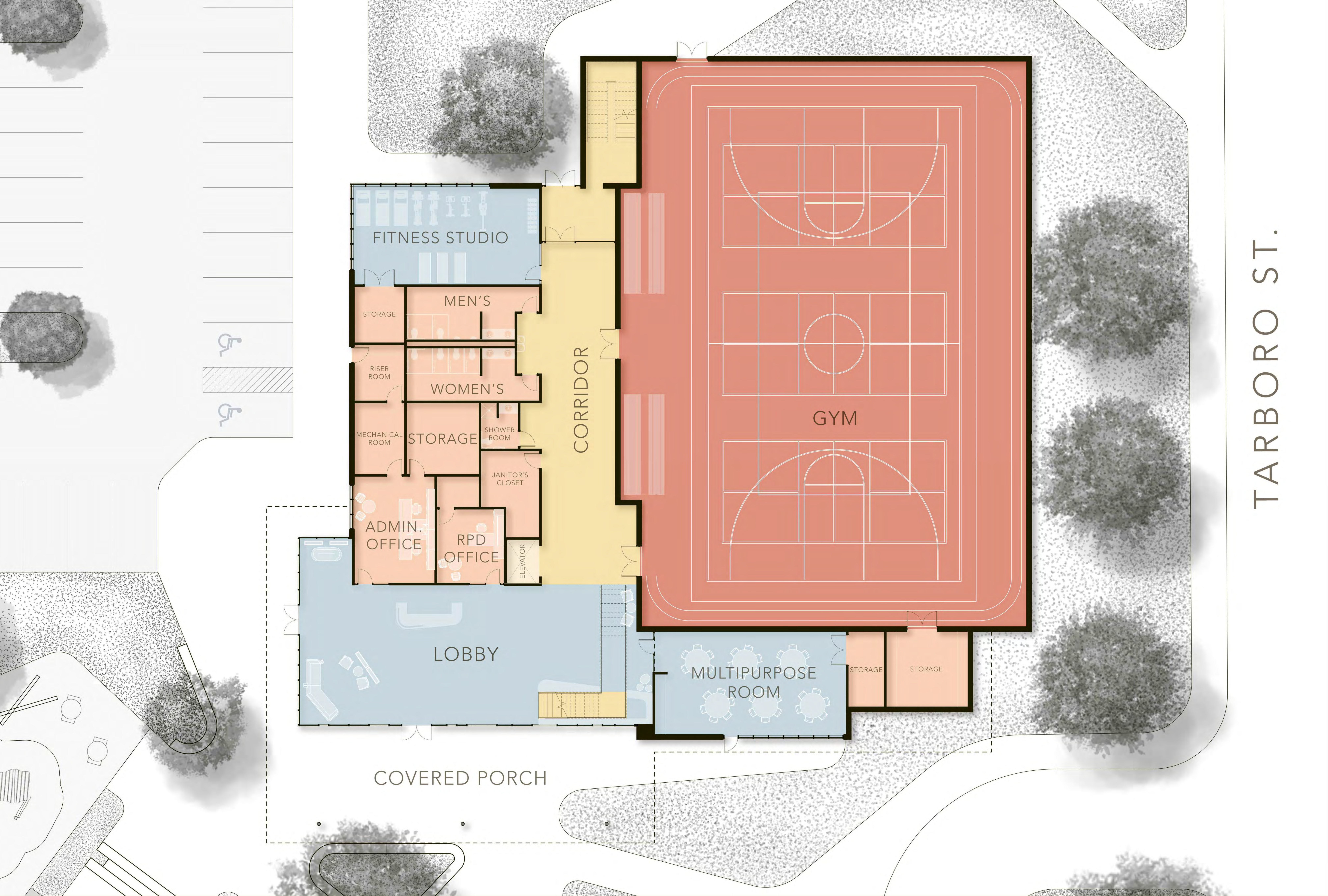


4 NATURE PLAY

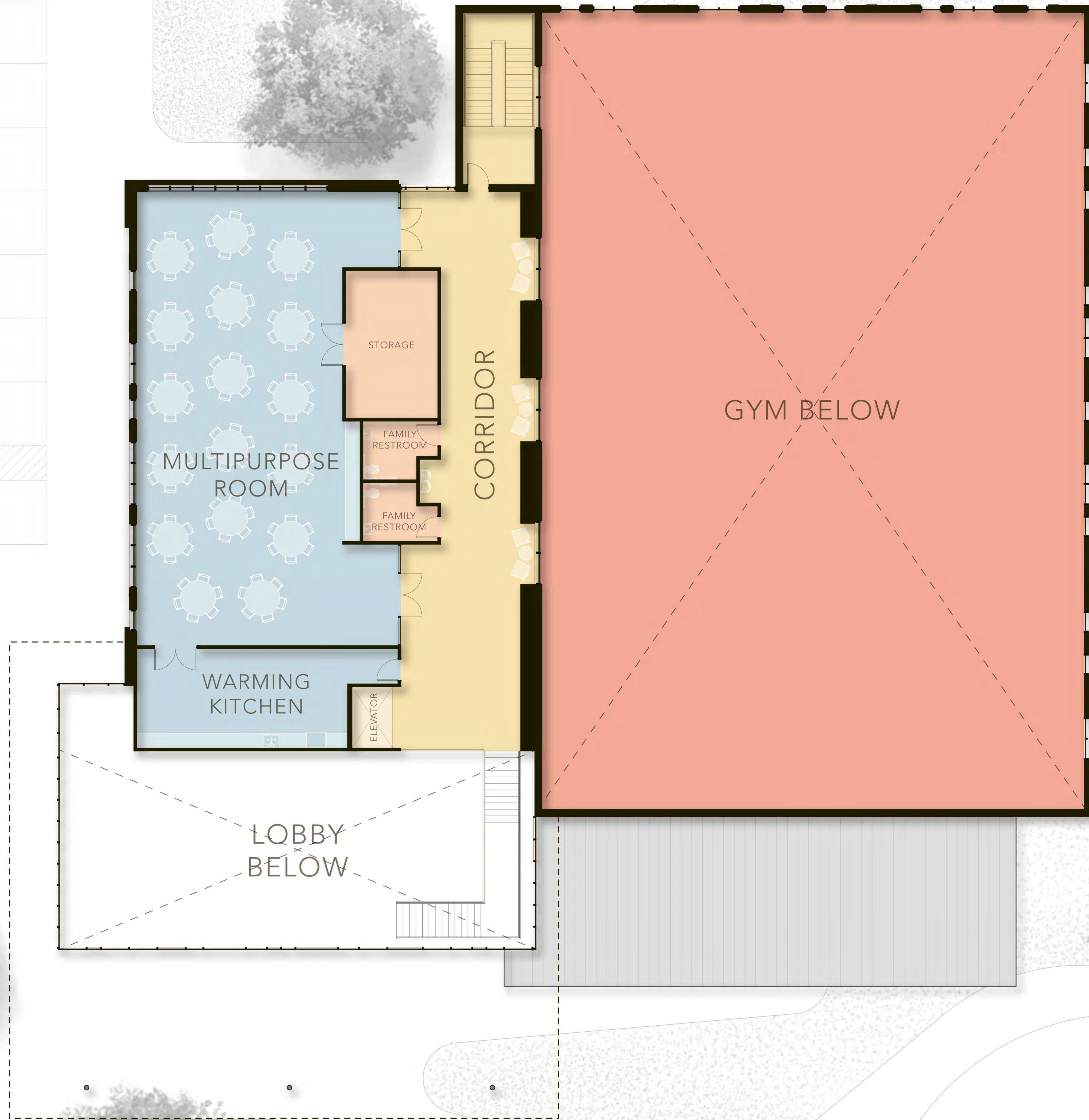


5 MIST GARDEN





TARBORO ST.





VIEW FROM PARKING LOT



VIEW AT ENTRY TOWARDS ST. MONICA



VIEW FROM PLAYGROUND



VIEW FROM "PAST TO PRESENT PROMENADE"

