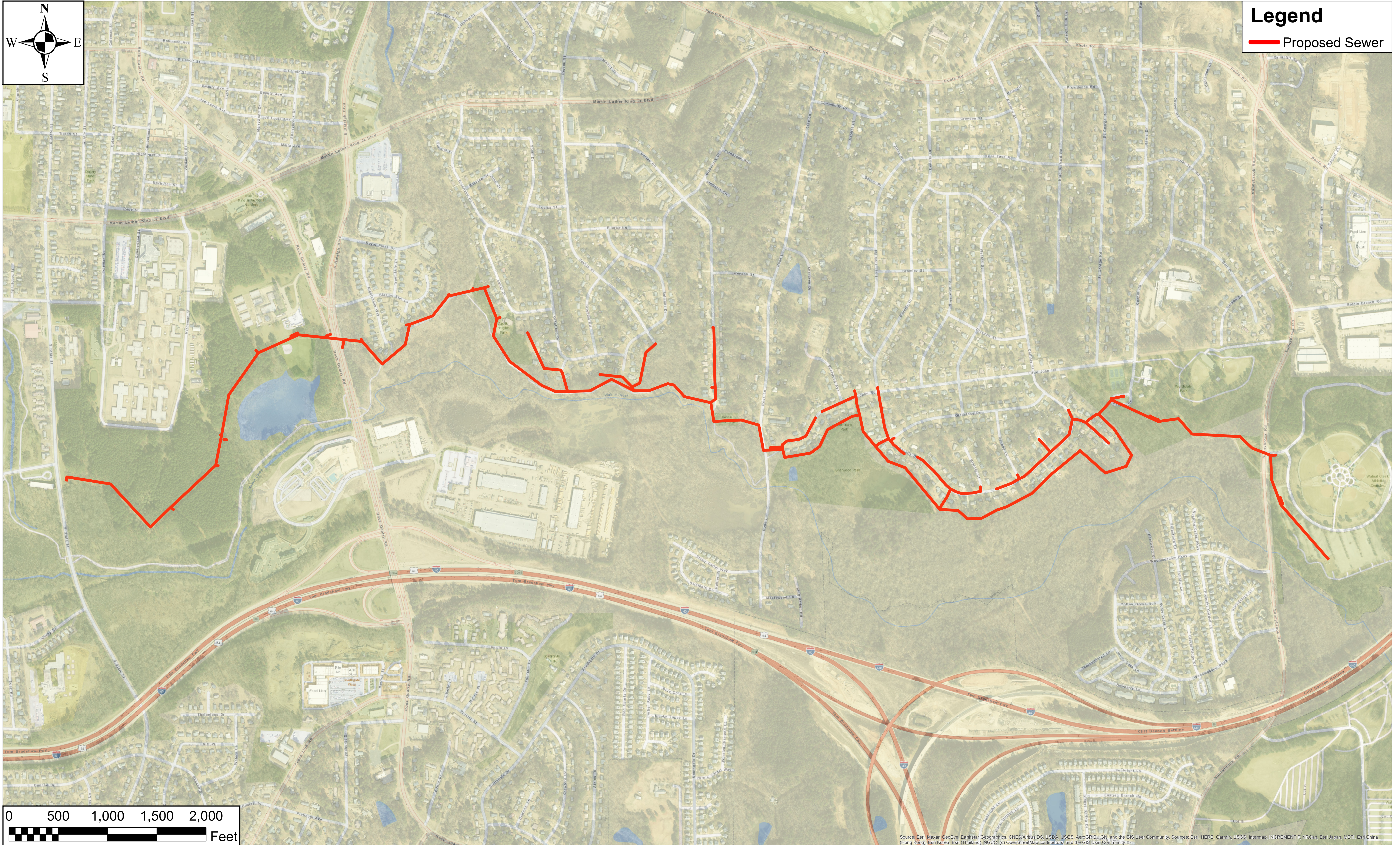


Legend
Proposed Sewer



Source: Esri, Maxar, GeoEye, Earthstar Geographics, CNES/Airbus DS, USDA, USGS, AeroGRID, IGN, and the GIS User Community. Sources: Esri, HERE, Garmin, USGS, Intermap, INCREMENT P, NRCan, Esri, Japan, METI, Esri, China (Hong Kong), Esri, Korea, Esri (Thailand), NGCC, (c) OpenStreetMap contributors, and the GIS User Community.

PROJECT OVERVIEW Upper Walnut Creek Interceptor Replacement