

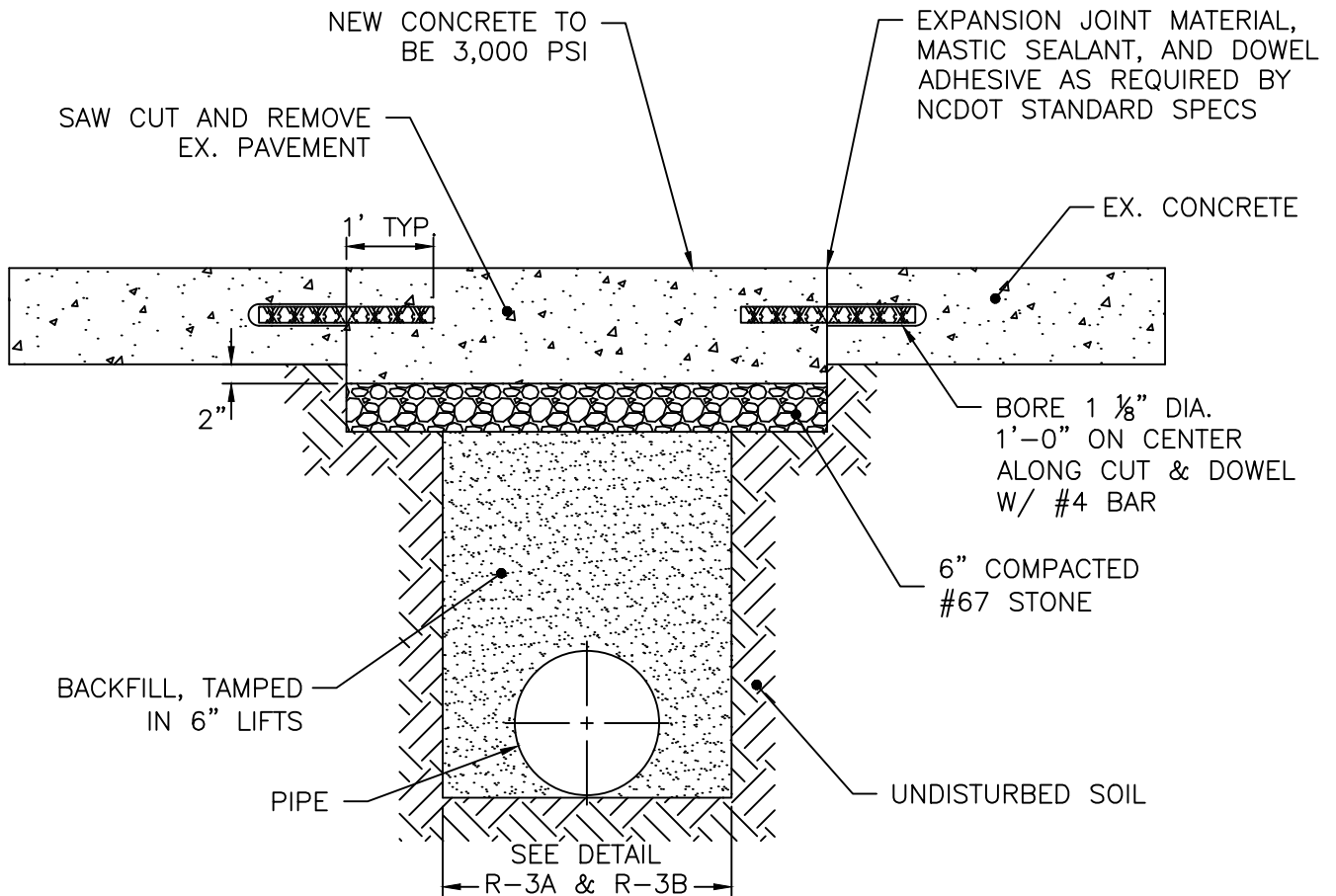


Raleigh Water

STANDARD REUSE DETAILS

TABLE OF CONTENTS

R-1	STANDARD CONCRETE PAVEMENT PATCH
R-2	STANDARD ASPHALT PAVEMENT PATCH
R-3A	TRENCH BOTTOM DIMENSIONS & BACKFILLING REQUIREMENTS FOR PVC
R-3B	TRENCH BOTTOM DIMENSIONS & BACKFILLING REQUIREMENTS FOR DI
R-4A	THRUST BLOCKING DESIGN DATA FOR DI REUSE MAINS
R-4B	THRUST BLOCKING DESIGN DATA FOR PVC REUSE MAINS
R-5	THRUST BLOCK INSTALL FOR 16" AND LARGER VALVES AND DEAD END MAINS
R-6	THRUST BLOCKING VIEWS
R-7	THRUST BLOCKING DESIGN QUANTITY TABLE
R-8	THRUST BLOCKING DESIGN QUANTITY TABLE
R-9	STANDARD VERTICAL BEND
R-10	MAIN AND VALVE MARKERS FOR REUSE WATER IN EASEMENTS
R-11	4"-24" TAPPING SLEEVE AND VALVE ASSEMBLY
R-12	VALVE RESTRAINT AT TEES AND CROSSES FOR LINES (4"-24")
R-13	BUTTERFLY VALVE MANHOLE FOR 16" AND LARGER MAINS
R-14	RECLAIMED WATER VALVE AND BOX INSTALLATION
R-15	STANDARD VALVE BOX
R-16	REUSE AIR RELEASE VALVE
R-17	STANDARD MANHOLE COVER
R-18	STANDARD 1" RECLAIMED WATER SERVICE AND METER BOX INSTALLATION
R-19	TEMPORARY REUSE MAIN BLOW OFF ASSEMBLY
R-20	PERMANENT REUSE MAIN BLOW OFF ASSEMBLY



NOTES:

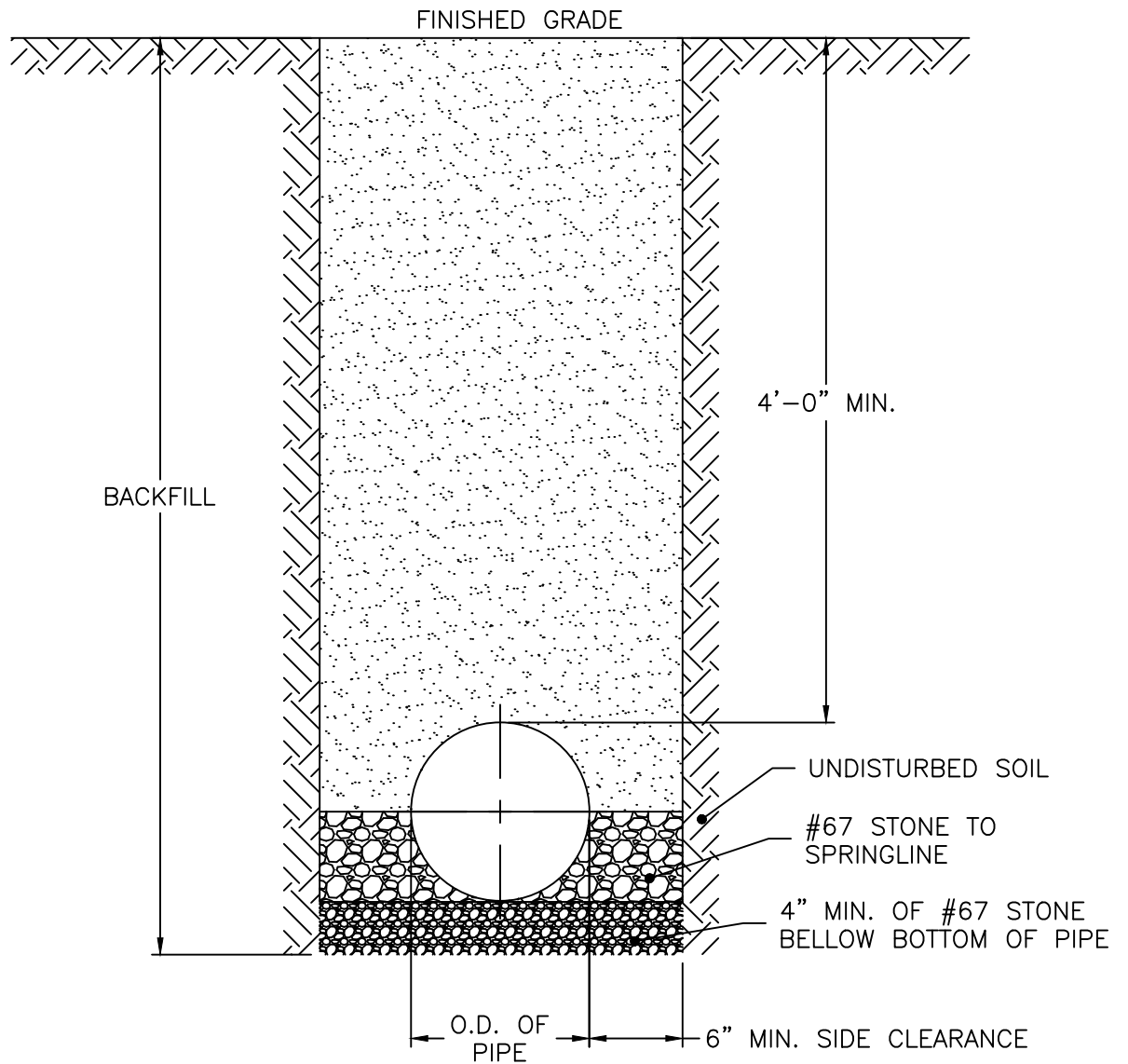
1. SEE DETAIL R-3A & R-3B FOR ADDITIONAL TRENCH AND PIPE BEDDING DETAILS.
2. PAVEMENT CUTS WITHIN NCDOT ROW SHALL CONFORM TO THE APPROVED ON SITE ENCROACHMENT PERMIT.
3. THE PAVEMENT CUT SHALL BE DEFINED BY A STRAIGHT EDGE AND CUT WITH AN APPROVED SAW CUT MACHINE.
4. THE TRENCH SUBGRADE MATERIAL SHALL BE BACKFILLED WITH SUITABLE MATERIAL AND COMPACTED TO AT LEAST 95% OF THE MAXIMUM DRY DENSITY AS DETERMINED BY AASHTO T 99 AS MODIFIED BY NCDOT.
5. THE FINAL 6" OF FILL SHALL CONSIST OF ABC MATERIAL COMPACTED TO AT LEAST 100% OF THE MAXIMUM DRY DENSITY AS DETERMINED BY AASHTO T 180 AS MODIFIED BY NCDOT.

CITY OF RALEIGH		
STANDARD DETAIL		
<i>REVISIONS</i>	<i>DATE: 01/18/2025</i>	<i>NOT TO SCALE</i>
	STANDARD CONCRETE PAVEMENT PATCH	
	R-1	

SEE TRANSPORTATION DETAIL
T-10.05.1 FOR ASPHALT REPAIR

SEE TRANSPORTATION DETAIL
T-10.05.2 FOR ASPHALT REPAIR EXTENTS

CITY OF RALEIGH		
STANDARD DETAIL		
<i>REVISIONS</i>	<i>DATE: 01/18/2025</i>	<i>NOT TO SCALE</i>
	STANDARD ASPHALT PAVEMENT PATCH	
	R-2	

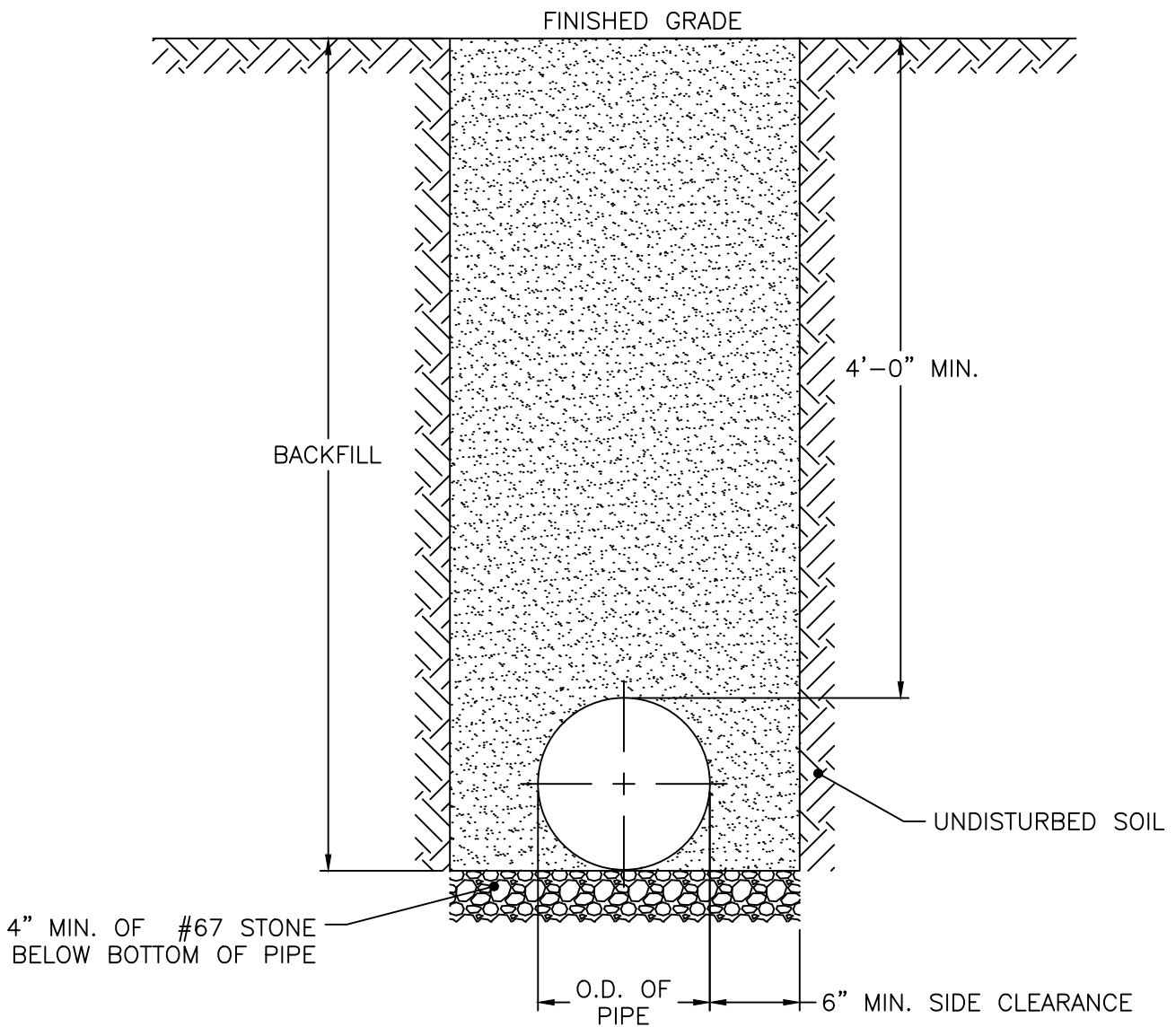


NOTES:

1. TRENCHES REQUIRING SHORING AND BRACING, DIMENSIONS SHALL BE TAKEN FROM THE INSIDE FACE OF THE SHORING AND BRACING.
2. NO ROCKS OR BOULDERS 4" OR LARGER TO BE USED IN BACKFILL.
3. ALL BACKFILL MATERIAL SHALL BE SUITABLE NATIVE MATERIAL.
4. BACKFILL SHALL BE TAMPED IN 6" LIFTS.
5. ACHIEVE 95% COMPACTION IN BACKFILL.

**CITY OF RALEIGH
STANDARD DETAIL**

<i>REVISIONS</i>	<i>DATE: 01/18/2025</i>	<i>NOT TO SCALE</i>
	TRENCH BOTTOM DIMENSIONS AND BACKFILLING REQUIREMENTS FOR PVC REUSE MAINS	
	R-3A	

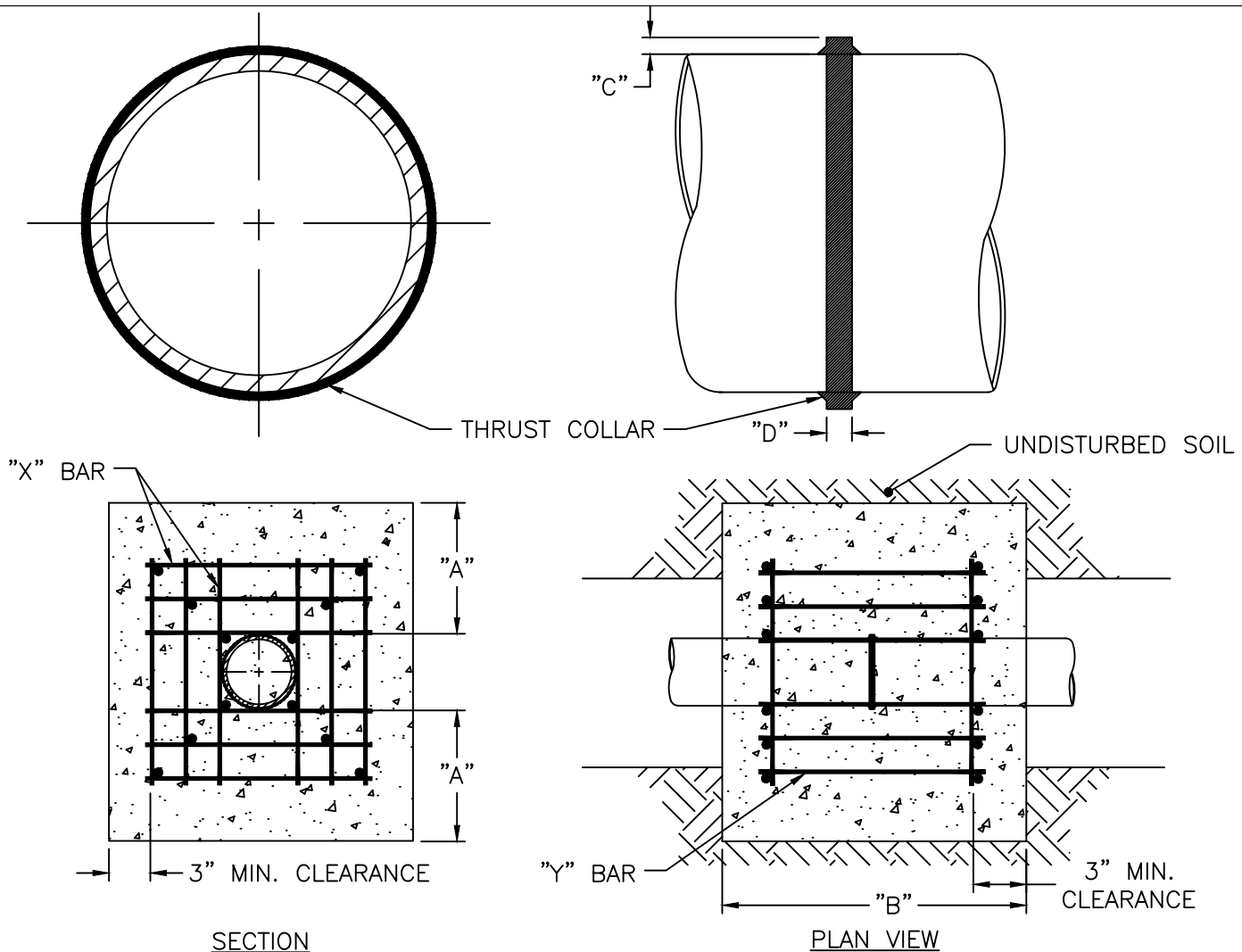


NOTES:

1. TRENCHES REQUIRING SHORING AND BRACING, DIMENSIONS SHALL BE TAKEN FROM THE INSIDE FACE OF THE SHORING AND BRACING.
2. NO ROCKS OR BOULDERS 4" OR LARGER TO BE USED IN BACKFILL.
3. ALL BACKFILL MATERIAL SHALL BE SUITABLE NATIVE MATERIAL.
4. BACKFILL SHALL BE TAMPED IN 6" LIFTS.
5. ACHIEVE 95% COMPACTION IN BACKFILL.

CITY OF RALEIGH
STANDARD DETAIL

REVISIONS	DATE: 01/18/2025	NOT TO SCALE
	TRENCH BOTTOM DIMENSIONS AND BACKFILLING REQUIREMENTS FOR DI REUSE MAINS	
	R-3B	



SECTION

PLAN VIEW

REINFORCING REQUIREMENTS

THRUST COLLAR AND THRUST SCHEDULE

I.D. PIPE	REBAR SIZE	"X" BAR LENGTH	"X" BAR WEIGHT	"Y" BAR LENGTH	"Y" BAR WEIGHT	NO. REQUIRED
6"-36"	#5	2'-2"+ O.D. PIPE	1.043 LBS/FT	1'-1"	1.1 LBS. EACH	X-24 Y-12
≥48"	#6	3'-0"+ O.D. PIPE	1.502 LBS/FT	1'-3"	1.9 LBS. EACH	X-24 Y-12

I.D. PIPE	"A"	"B"	"C"	"D"
6"-16"	1'-4"	1'-7"	2"	3/8"
20"-24"	1'-4"	1'-7"	3"	1/2"
30"-36"	1'-4"	1'-7"	4"	5/8"
≥48"	1'-8"	1'-9"	6"	7/8"

NOTES:

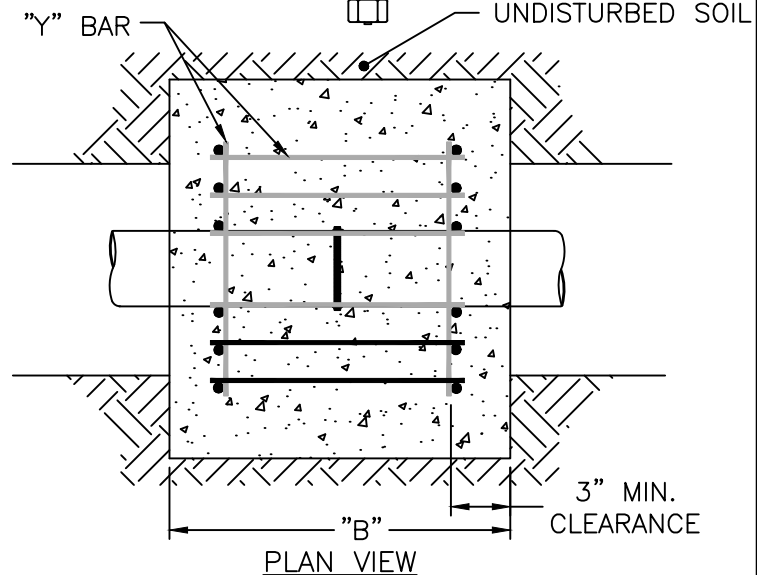
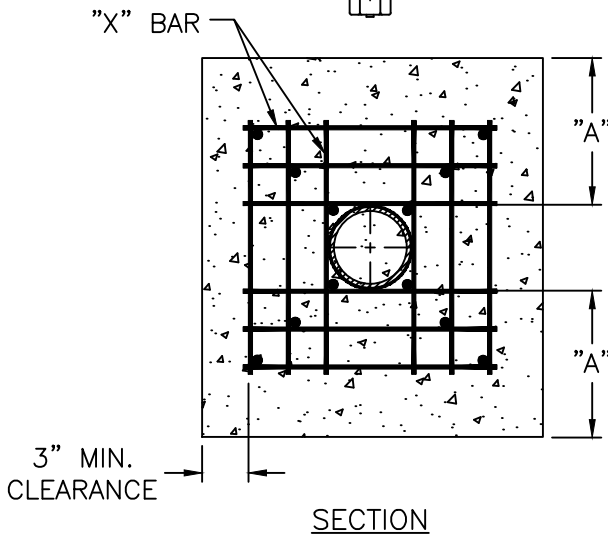
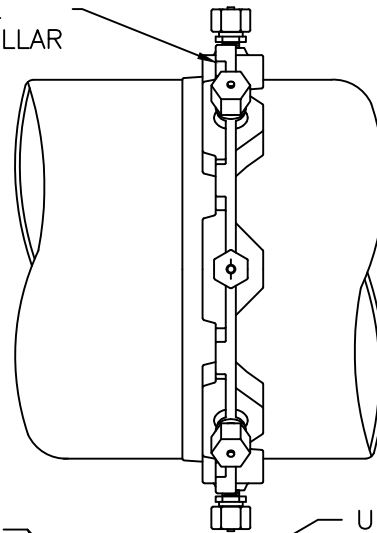
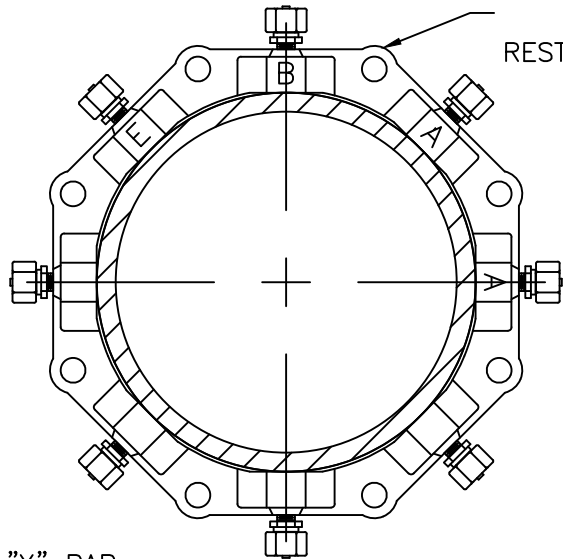
1. SEE DETAIL R-6 FOR THRUST BLOCK LOCATIONS.
2. CONCRETE SHALL BE 3,000 PSI AND TRANSIT MIXED.
3. REINFORCING BARS SHALL BE DEFORMED AND TIED TOGETHER.
4. TRENCH BOTTOM WIDTH IN VICINITY OF THRUST BLOCK INSTALLATION SHALL BE THE MINIMUM WIDTH AS SHOWN ON DETAIL R-3A.
5. BACKFILL TAMPED IN 6" LIFTS, SEE DETAIL R-3A.
6. THRUST COLLAR MUST BE FACTORY WELDED ON BOTH SIDES ALONG BOTH EDGES OF COLLAR AROUND CIRCUMFERENCE.

CITY OF RALEIGH
STANDARD DETAIL

REVISIONS DATE: 01/18/2025 NOT TO SCALE

THRUST BLOCKING DESIGN
DATA FOR DI REUSE MAINS

R-4A



REINFORCING REQUIREMENTS

I.D. PIPE	REBAR SIZE	"X" BAR LENGTH	"X" BAR WEIGHT	"Y" BAR LENGTH	"Y" BAR WEIGHT	NO. REQUIRED
6"-36"	#5	2'-2"+ O.D. PIPE	1.043 LBS/FT	1'-1"	1.1 LBS. EACH	X-24 Y-12
≥48"	#6	3'-0"+ O.D. PIPE	1.502 LBS/FT	1'-3"	1.9 LBS. EACH	X-24 Y-12

THRUST COLLAR AND THRUST SCHEDULE

I.D. PIPE	"A"	"B"
6"-16"	1'-4"	1'-7"
20"-24"	1'-4"	1'-7"
30"-36"	1'-4"	1'-7"
≥48"	1'-8"	1'-9"

NOTES:

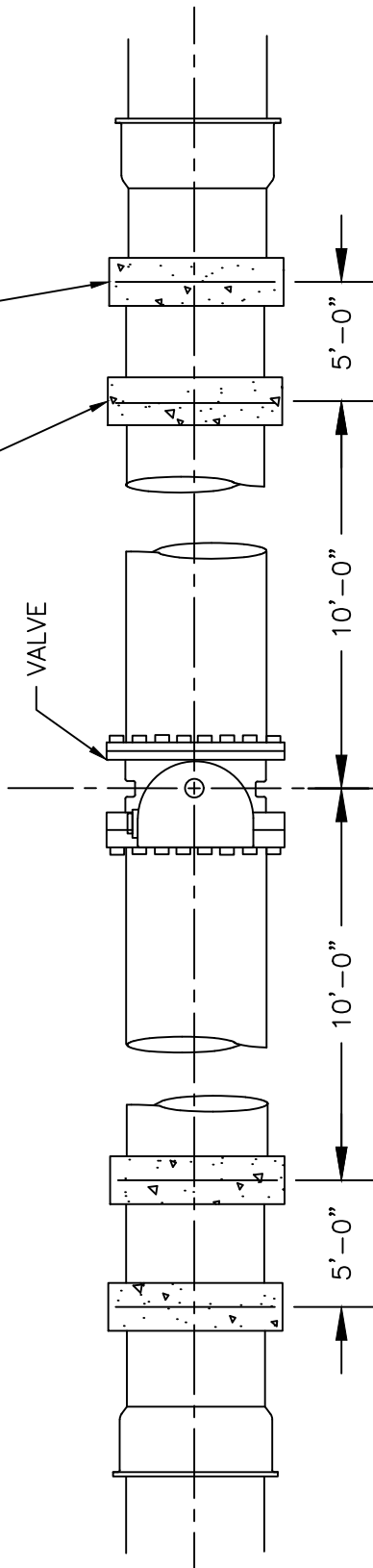
1. SEE DETAIL R-6 FOR THRUST BLOCK LOCATIONS.
2. CONCRETE SHALL BE 3,000 PSI AND TRANSIT MIXED.
3. REINFORCING BARS SHALL BE DEFORMED AND TIED TOGETHER.
4. TRENCH BOTTOM WIDTH IN VICINITY OF THRUST BLOCK INSTALLATION SHALL BE THE MINIMUM WIDTH AS SHOWN ON DETAIL R-3B.
5. BACKFILL TAMPED IN 6" LIFTS, SEE DETAIL R-3B.
6. MECHANICAL RESTRAINING COLLAR SHALL BE AS MANUFACTURED BY MEGA-LUG OR EQUAL.

CITY OF RALEIGH
STANDARD DETAIL

REVISIONS	DATE: 01/18/2025	NOT TO SCALE
	THRUST BLOCKING DESIGN DATA FOR PVC REUSE MAINS	
	R-4B	

16" MAIN - 1 THRUST BLOCK REQUIRED, ON MAINS GREATER THAN 16" 2 THRUST BLOCKS REQUIRED.

STANDARD THRUST BLOCK, SEE DETAIL R-4A OR R-4B

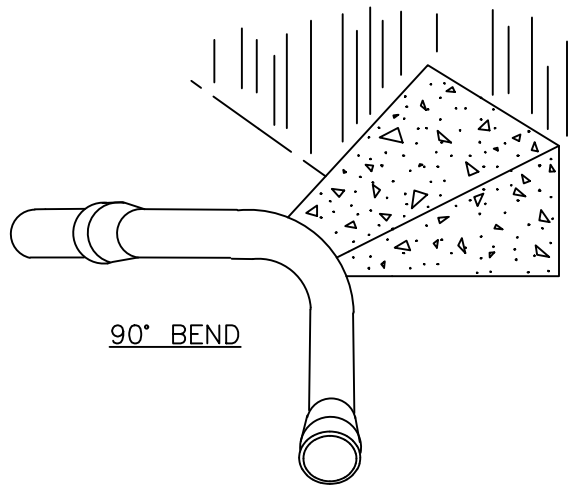
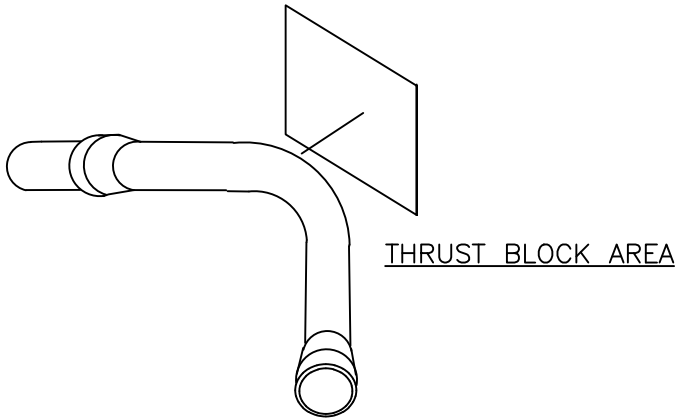
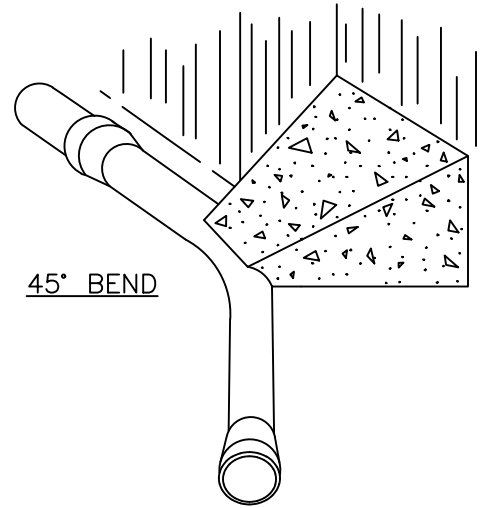
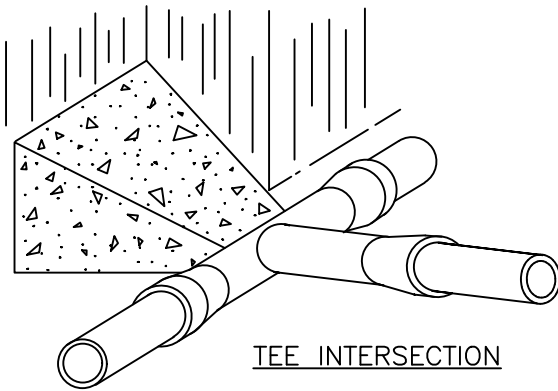


THRUST BLOCKING AT VALVES 16" AND LARGER

CITY OF RALEIGH
STANDARD DETAIL

REVISIONS	DATE: 01/18/2025	NOT TO SCALE
	THRUST BLOCK INSTALLATION FOR 16" AND LARGER VALVES AND DEAD END REUSE MAINS	
	R-5	

THRUST BLOCKING



NOTES:

1. CONCRETE SHALL BE 3,000 PSI.
2. CONCRETE SHALL NOT CONTACT BOLTS OR ENDS OF MECHANICAL JOINT FITTINGS.
3. TRENCHES SHALL CONFORM TO DETAIL R-3A & R-3B.
4. SEE DETAIL R-7 & R-8 (THRUST BLOCK TABLES), FOR AREA OF CONCRETE REQUIRED.
5. ALL BENDS AND INTERSECTIONS SHALL HAVE CONCRETE THRUST BLOCKING.

CITY OF RALEIGH		
STANDARD DETAIL		
<i>REVISIONS</i>	<i>DATE: 01/18/2025</i>	<i>NOT TO SCALE</i>
	THRUST BLOCKING VIEWS	
	R-6	

REACTION BEARING AREAS FOR HORIZONTAL WATER PIPE BENDS
BASED ON TEST PRESSURE OF 200 PSI

ALL AREAS GIVEN IN SQUARE FEET

SIZE OF BEND	DEGREE OF BEND	STATIC THRUST IN POUNDS	MODERATELY DRY CLAY 4,000 LBS/FT ²	SOFT CLAY 2,000 LBS/FT ²	1,600 LBS/FT ² GRAVEL/COARSE SAND	8,000 LBS/FT ² DRY CLAY (ALWAYS DRY)	SAND, COMPACT FIRM 8,000 LBS/FT ²	SAND-CLEAN DRY 4,000 LBS/FT ²	SOIL 1,000 LBS/FT ² QUICKSAND (VERY POOR)	ROCK-POOR 10,000 LBS/FT ²
6"	11 ¼°	1,108	1	1	1	1	1	1	2	1
	22 ½°	2,207	1	2	2	1	1	1	3	1
	45°	4,328	2	3	3	1	1	2	5	1
	90°	7,996	2	4	5	1	1	2	8	1
	PLUG	5,655	2	3	4	1	1	2	6	1
8"	11 ¼°	1,970	1	1	2	1	1	1	2	1
	22 ½°	3,922	1	2	3	1	1	1	4	1
	45°	7,694	2	4	5	1	1	2	8	1
	90°	14,215	4	8	9	2	2	4	15	2
	PLUG	10,053	3	5	6	2	2	3	10	1
12"	11 ¼°	4,433	2	3	3	1	1	2	5	1
	22 ½°	8,826	3	5	6	2	2	3	9	1
	45°	17,312	5	9	11	3	3	5	18	2
	90°	31,983	8	16	19	4	4	8	32	4
	PLUG	22,619	6	12	14	3	3	6	23	3
16"	11 ¼°	7,881	2	4	5	1	1	2	8	1
	22 ½°	15,691	4	8	10	2	2	4	16	2
	45°	30,779	8	16	19	4	4	8	31	4
	90°	56,861	15	29	35	8	8	15	57	6
	PLUG	40,213	10	21	25	5	5	10	41	5

NOTES:

- REACTION BEARING AREAS ARE IN SQUARE FEET MEASURED IN A VERTICAL PLANE IN THE TRENCH SIDE AT AN ANGLE OF 90° TO THE THRUST VECTOR.
- USE 6" 90° BEND VALUE FOR HYDRANTS FOR ADDITIONAL SAFETY FACTOR.

CITY OF RALEIGH
STANDARD DETAIL

<i>REVISIONS</i>	<i>DATE: 01/18/2025</i>	<i>NOT TO SCALE</i>
	THRUST BLOCKING DESIGN QUANTITY TABLE	
	R-7	

REACTION BEARING AREAS FOR HORIZONTAL WATER PIPE BENDS
BASED ON TEST PRESSURE OF 200 PSI

ALL AREAS GIVEN IN SQUARE FEET

SIZE OF BEND	DEGREE OF BEND	STATIC THRUST IN POUNDS	MODERATELY DRY CLAY 4,000 LBS/FT ²	SOFT CLAY 2,000 LBS/FT ²	1,600 LBS/FT ² GRAVEL/COARSE SAND	8,000 LBS/FT ² DRY CLAY (ALWAYS DRY)	SAND, COMPACT FIRM 8,000 LBS/FT ²	SAND-CLEAN DRY 4,000 LBS/FT ²	SOIL 1,000 LBS/FT ² QUICKSAND (VERY POOR)	ROCK-POOR 10,000 LBS/FT ²
24"	11 ¼°	17,734	5	9	11	3	3	5	18	2
	22 ½°	35,305	9	18	22	5	5	9	36	4
	45°	69,252	18	35	42	9	9	18	70	7
	90°	127,936	32	64	77	16	16	32	128	113
	PLUG	90,478	23	46	55	12	12	23	91	10
30"	11 ¼°	27,709	7	14	17	4	4	7	2	3
	22 ½°	55,163	14	28	34	7	7	14	56	6
	45°	108,206	28	55	65	14	14	28	109	11
	90°	199,900	50	100	120	25	25	50	200	20
	PLUG	141,372	36	71	85	18	18	36	142	15
36"	11 ¼°	39,901	10	20	24	5	5	10	40	4
	22 ½°	79,439	20	40	48	10	10	20	30	8
	45°	155,816	39	78	94	20	20	39	156	16
	90°	287,855	72	144	172	36	36	72	288	29
	PLUG	203,575	51	102	122	26	26	51	204	21
48"	11 ¼°	70,935	18	36	43	9	9	18	71	8
	22 ½°	141,218	36	71	85	18	18	36	142	15
	45°	277,007	70	139	166	35	35	70	277	28
	90°	511,742	128	256	320	64	64	128	512	52
	PLUG	361,911	91	181	217	46	46	91	362	37

NOTES:

- REACTION BEARING AREAS ARE IN SQUARE FEET MEASURED IN A VERTICAL PLANE IN THE TRENCH SIDE AT AN ANGLE OF 90° TO THE THRUST VECTOR.
- USE 6" 90° BEND VALUE FOR HYDRANTS FOR ADDITIONAL SAFETY FACTOR.

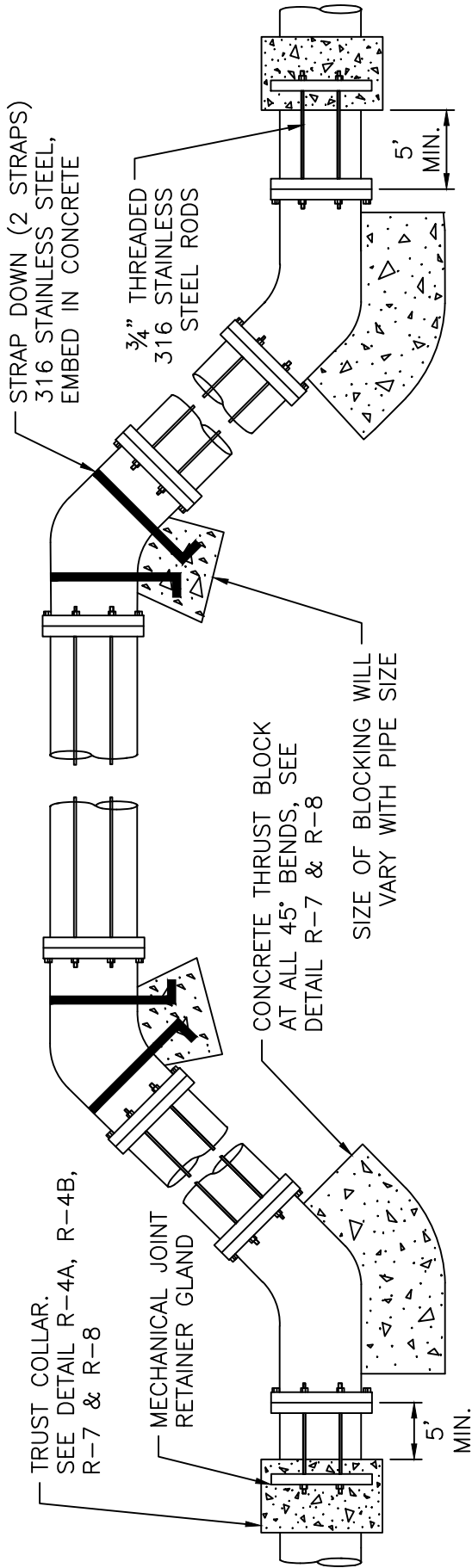
CITY OF RALEIGH
STANDARD DETAIL

REVISIONS DATE: 01/18/2025 NOT TO SCALE

THRUST BLOCKING DESIGN
QUANTITY TABLE

R-8

TOP OF GROUND



STRAP REQUIREMENTS

SIZE OF 45° BEND	STATIC TRUST IN POUNDS	NO. OF RODS REQUIRED	STRAP WIDTH	STRAP THICKNESS
6"	4,328	2	1"	3/16"
8"	7,694	4	1.5"	3/16"
12"	17,312	4	2"	1/4"
16"	30,779	8	2"	1/2"
24"	69,252	8	4"	1/2"

ROD REQUIREMENTS

PIPE DIA	RODDING	RJ GLANDS	THRUST COLLAR	THRUST BLOCKING
<12"	X	X	X	
≥12"	X	X	X	X

RESTRAINT REQUIREMENTS

"X" DENOTES REQUIRED RESTRAINT.

NOTES:

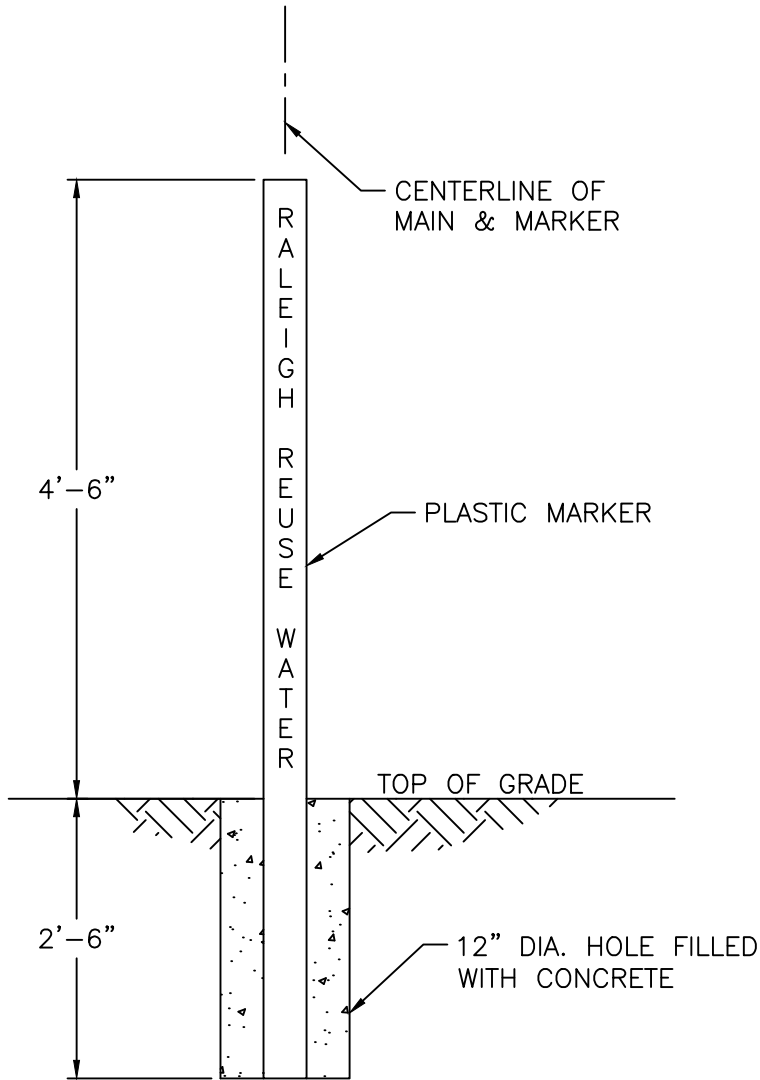
1. STEEL RODS AND BOLTS SHALL BE 3/4" 316 STAINLESS STEEL.
2. CONCRETE SHALL NOT CONTACT BOLTS OR ENDS OF MECHANICAL JOINT BENDS.
3. RESTRAINED MECHANICAL GLANDS TO BE USED AT ALL FITTINGS.
4. MUST USE DUCTILE IRON EYE BOLTS WHERE NECESSARY.
5. 3' MINIMUM COVER MUST BE MAINTAINED.
6. EXTERNAL RESTRAINT REQUIRED. INTEGRAL BELL RESTRAINT REQUIRES DIRECTOR'S APPROVAL.

CITY OF RALEIGH
STANDARD DETAIL

REVISIONS DATE: 01/18/2025 NOT TO SCALE

STANDARD VERTICAL BEND

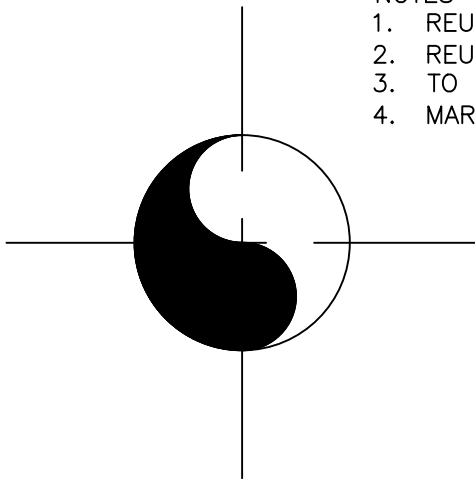
R-9



REUSE WATER

NOTES

1. REUSE WATER MARKER TO BE PURPLE IN COLOR.
2. REUSE WATER MARKER TO BE LABELED "RALEIGH REUSE WATER".
3. TO BE SPACED ALONG CENTERLINE OF MAIN EVERY 300 FEET.
4. MARKERS TO BE ROUND AND 4" IN DIAMETER.



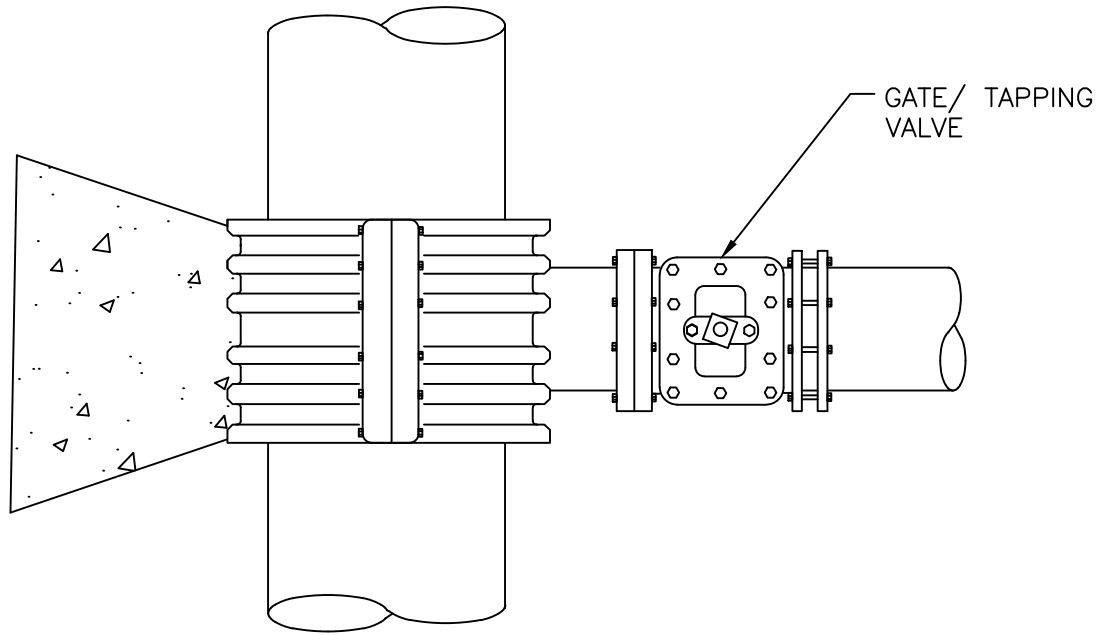
REUSE WATER MAIN

**CITY OF RALEIGH
STANDARD DETAIL**

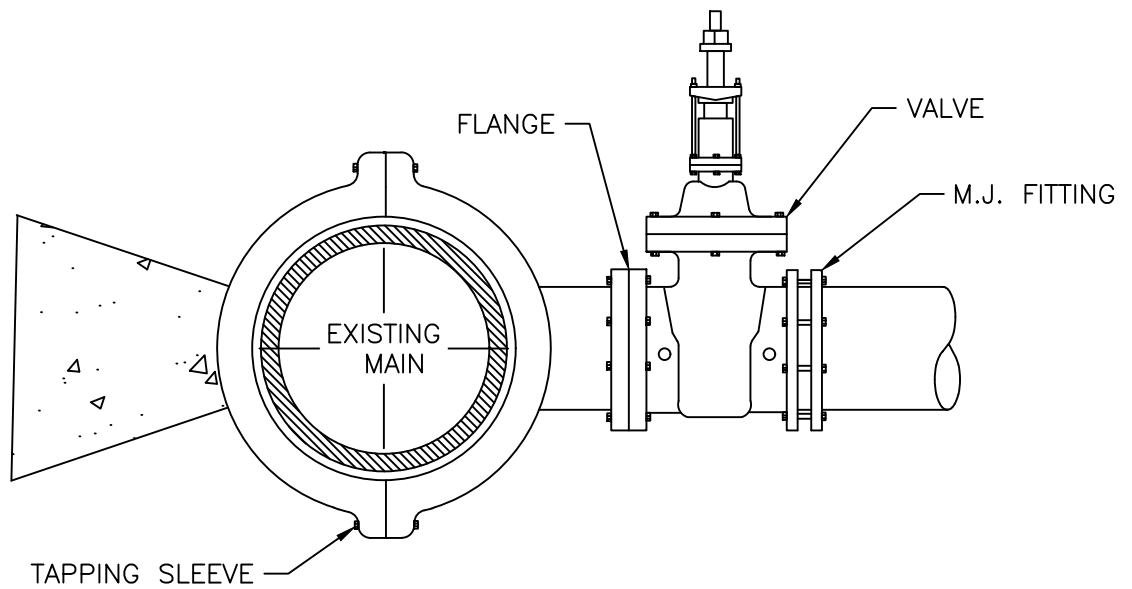
<i>REVISIONS</i>	<i>DATE: 01/18/2025</i>	<i>NOT TO SCALE</i>
------------------	-------------------------	---------------------

	MAIN AND VALVE MARKERS FOR REUSE WATER IN EASEMENTS	
--	---	--

R-10



TOP VIEW



SIDE VIEW

NOTES:

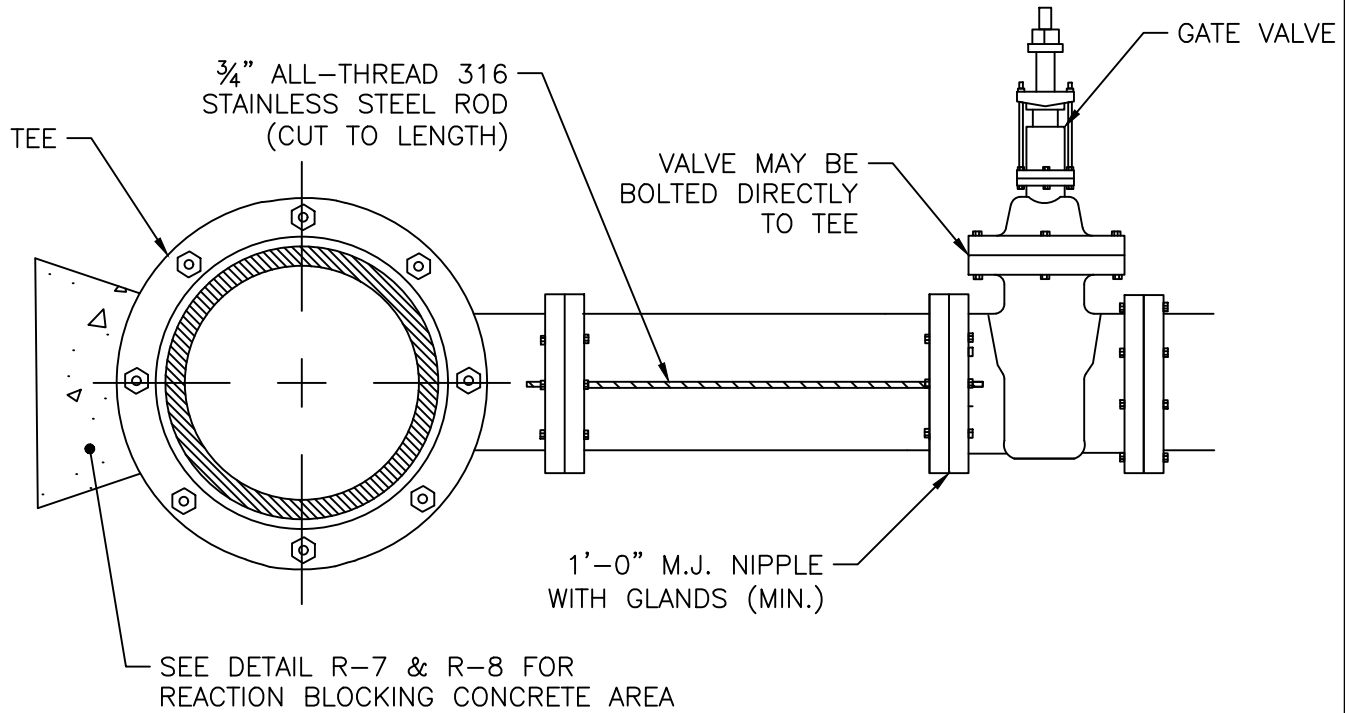
1. CONCRETE SHALL NOT CONTACT BOLTS OR ENDS OF MECHANICAL JOINT FITTINGS.
2. SEE DETAIL R-7 & R-8 (REACTION BLOCK TABLES) FOR AREA OF CONCRETE REQUIRED.
3. 3,000 PSI SOLID CONCRETE SHALL BE USED AS FOOTING FOR DUCTILE IRON PIPE.

CITY OF RALEIGH
STANDARD DETAIL

REVISIONS	DATE: 01/18/2025	NOT TO SCALE
-----------	------------------	--------------

4"-24" TAPPING SLEEVE
AND VALVE ASSEMBLY

R-11



ROD REQUIREMENTS

NO. OF RODS	BRANCH SIZE
4"	2
6"	2
8"	4
12"	4
16"	6
24"	6
30"	8
36"	8

NOTES:

1. STEEL RODS AND BOLTS SHALL BE 3/4" 316 STAINLESS STEEL.
2. SEE DETAIL R-7 & R-8 (REACTION BLOCK TABLES) FOR AREA OF CONCRETE REQUIRED.
3. CONCRETE SHALL NOT CONTACT BOLTS OR ENDS OF MECHANICAL FITTINGS.

CITY OF RALEIGH
STANDARD DETAIL

REVISIONS	DATE: 01/18/2025	NOT TO SCALE
	VALVE RESTRAINT AT TEES AND CROSSES FOR LINES (4"-24")	
	R-12	

VALVE SIZE	MH DIA.
16"	5'
24"	6'
≥30"	8'

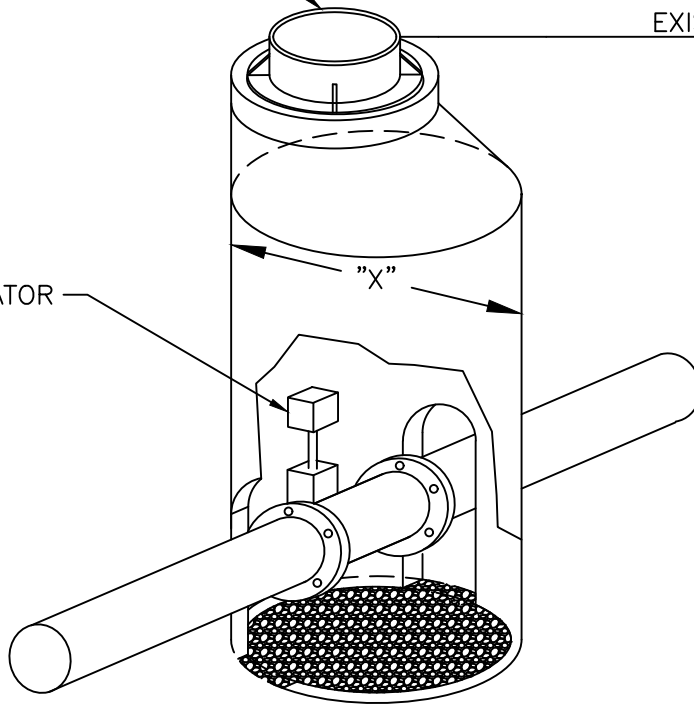
NOTES:

1. USE STANDARD PRECAST ECCENTRIC TOP.
2. BASE SECTION SHALL BE OF "DOG HOUSE" TYPE TO FIT OVER MAIN.
3. PROVIDE A MIN. OF 12" OF #67 STONE FOR POSITIVE DRAINAGE IN BOTTOM OF MANHOLE.
4. GROUT RISER/BASE SECTION AS NECESSARY.
5. MANHOLE LID SHALL SAY "REUSE".
6. FLAT TOP MAY BE USED IN NON-PAVED AREAS WHEN NECESSARY TO MATCH GRADE.

ECCENTRIC TOP WITH COVER
OPENING OVER ACTUATOR

EXISTING GRADE

NUT TYPE ACTUATOR

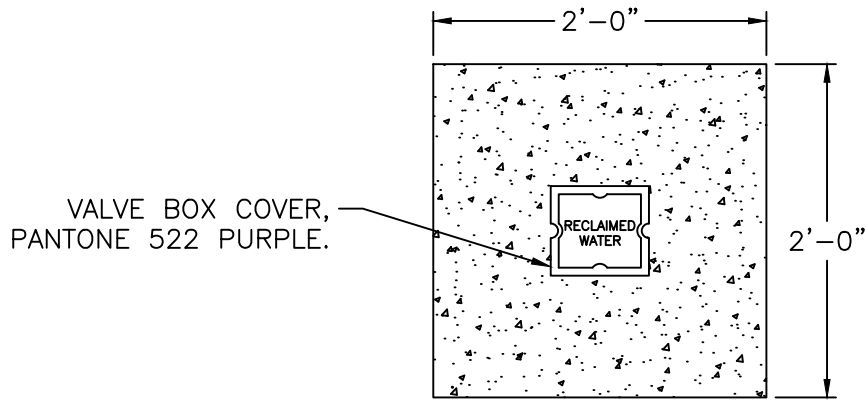


CITY OF RALEIGH
STANDARD DETAIL

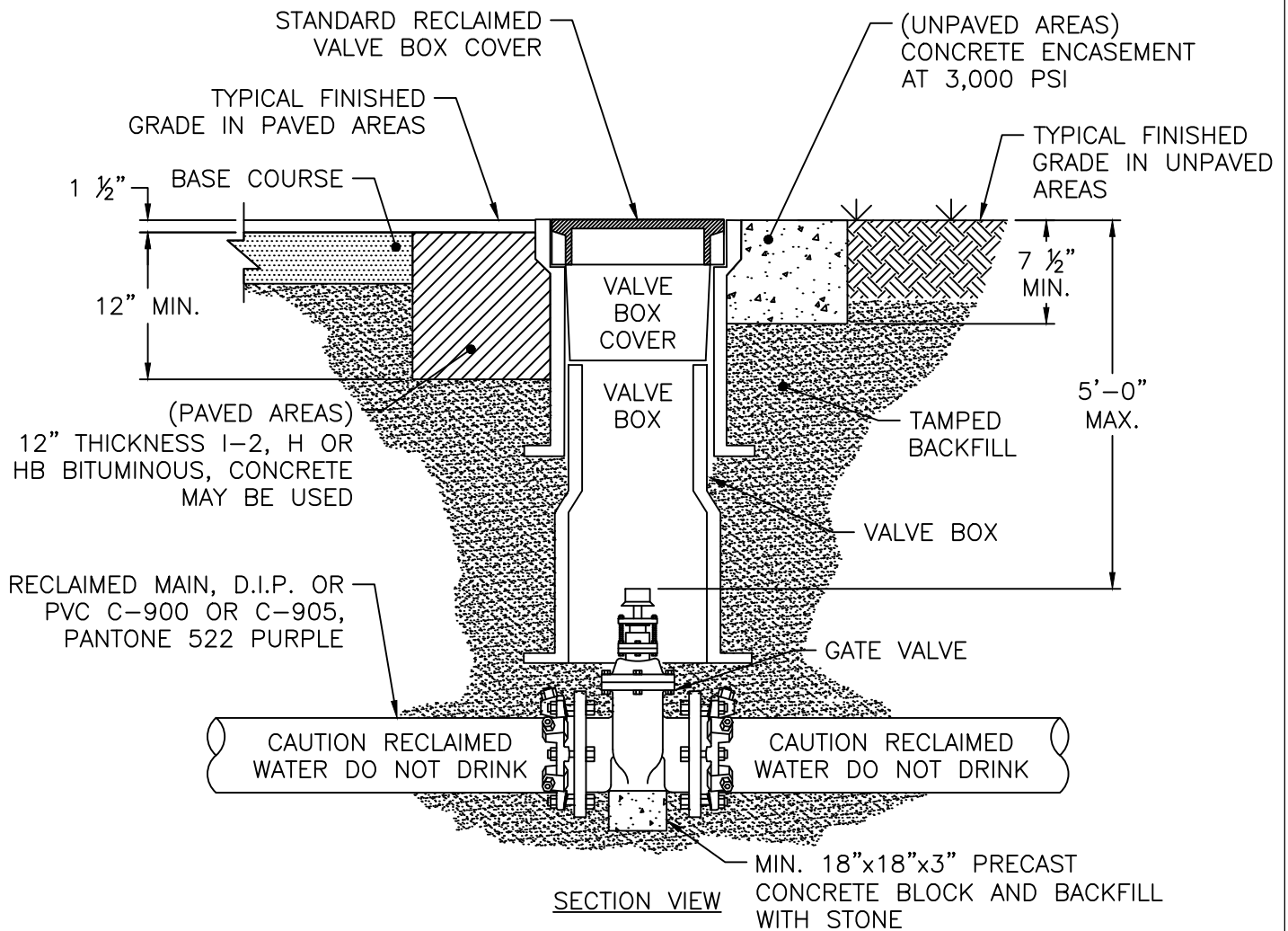
REVISIONS	DATE: 01/18/2025	NOT TO SCALE
-----------	------------------	--------------

	BUTTERFLY VALVE MANHOLE FOR 16" AND LARGER MAINS
--	---

R-13



PLAN VIEW



SECTION VIEW

NOTES:

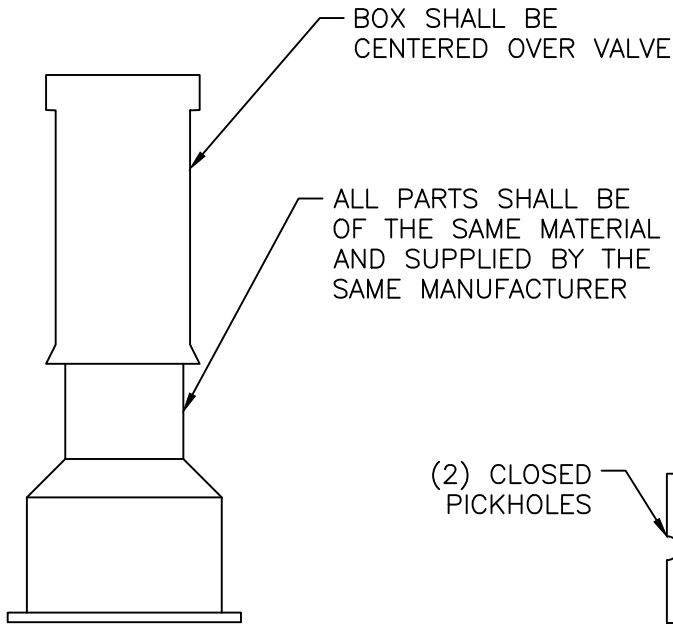
1. ONLY MANUFACTURED VALVE BOX EXTENSIONS SHALL BE ALLOWED.
2. VALVE OPERATING NUT MUST BE EXTENDED SO THAT THE DEPTH IS NO GREATER THAN 5' FROM THE SURFACE USING A MANUFACTURER APPROVED EXTENSION KIT.
3. PRECAST CONCRETE ENCASEMENT IS ALLOWED OUTSIDE OF PAVED AREAS.
4. VALVE BOX SHOULD NOT CONTACT MAIN OR VALVE.

CITY OF RALEIGH
STANDARD DETAIL

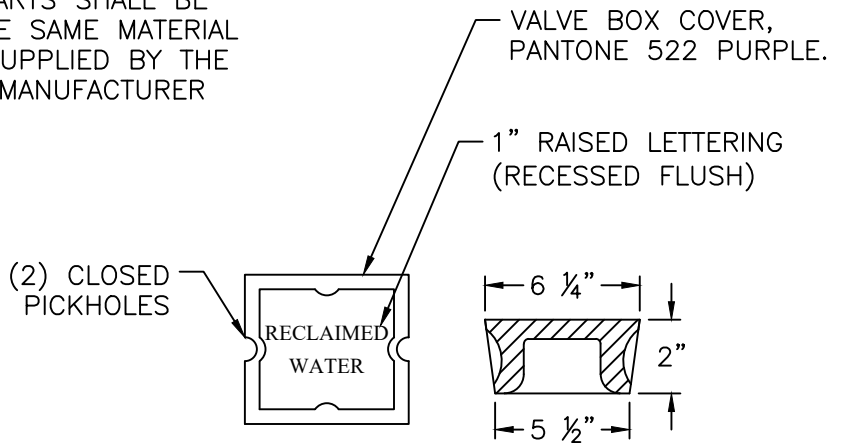
REVISIONS DATE: 01/18/2025 NOT TO SCALE

RECLAIMED WATER VALVE
AND BOX INSTALLATION

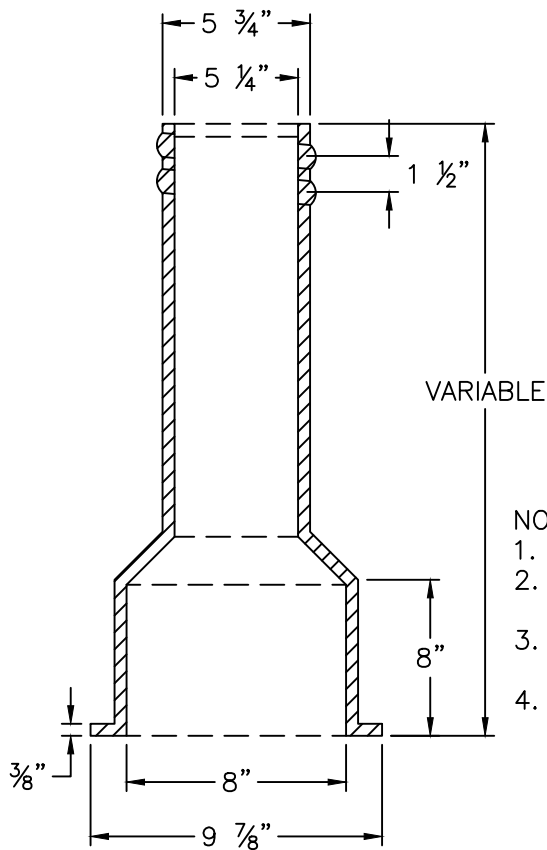
R-14



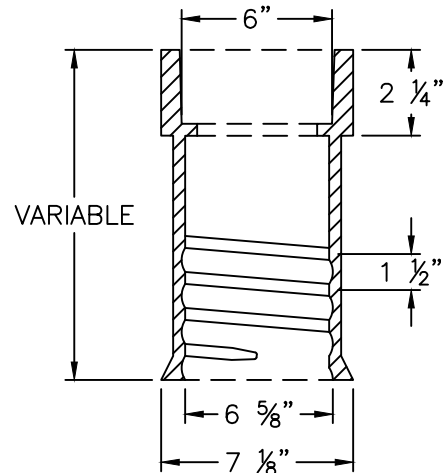
COMPLETE BOX



COVER AND LID



BOTTOM SECTION

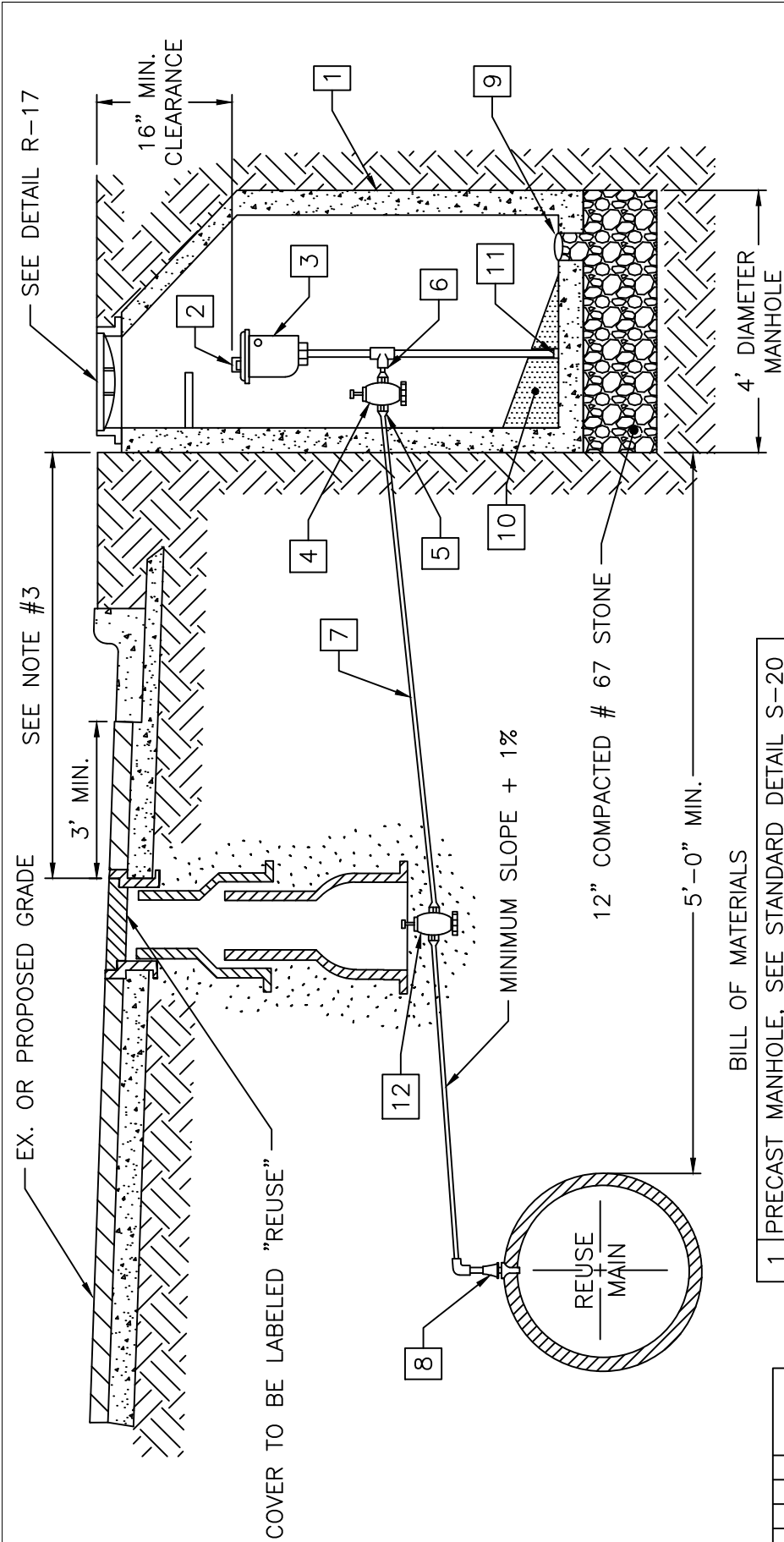


SQUARE UPPER SECTION

NOTES:

1. VALVE BOX COVER SHALL WEIGH A MINIMUM 13 LBS.
2. ENTIRE VALVE BOX ASSEMBLY & COVER SHALL BE CAST FROM CLASS 35 GRAY IRON.
3. ASSEMBLY SHALL BE DOMESTICALLY MADE AND MANUFACTURED IN THE U.S.A.
4. ASSEMBLY OTHER THAN COVER SHALL BE PAINTED BLACK.

CITY OF RALEIGH STANDARD DETAIL		
REVISIONS	DATE: 01/18/2025	NOT TO SCALE
	STANDARD VALVE BOX	
R-15		



- NOTE:
1. AIR VALVE TO BE P-20 WITH VACUUM CHECK BY CRISPIN OR VAL MATIC VM 45.
 2. THE AIR RELEASE MANHOLE SHALL BE INSTALLED IN THE SHOULDER OR AS DIRECTED BY THE ENGINEER.
 3. FOR MAINS LOCATED OUTSIDE OF STREET RIGHT-OF-WAYS THE MAXIMUM DISTANCE BETWEEN THE MANHOLE AND THE VALVE BOX SHOULD BE THREE (3) FEET.
 4. MAIN SHALL BE DEEP ENOUGH TO ACCOMMODATE INSTALLATION AS SHOWN.

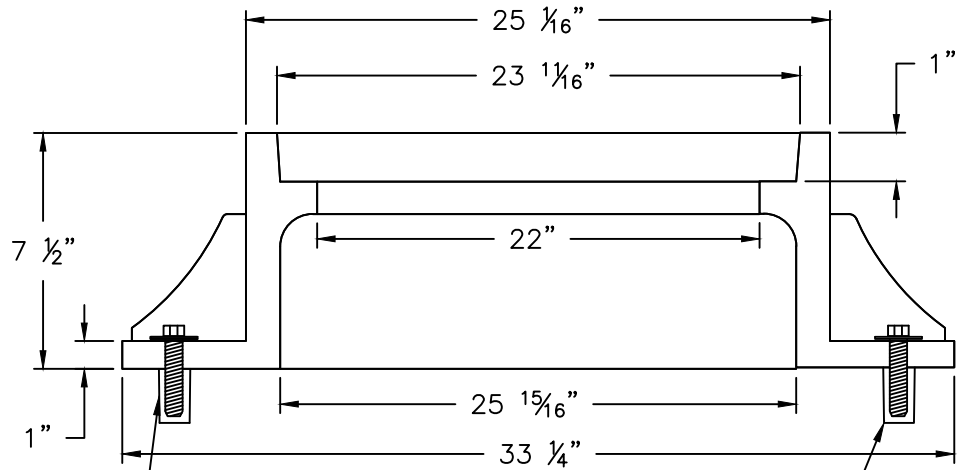
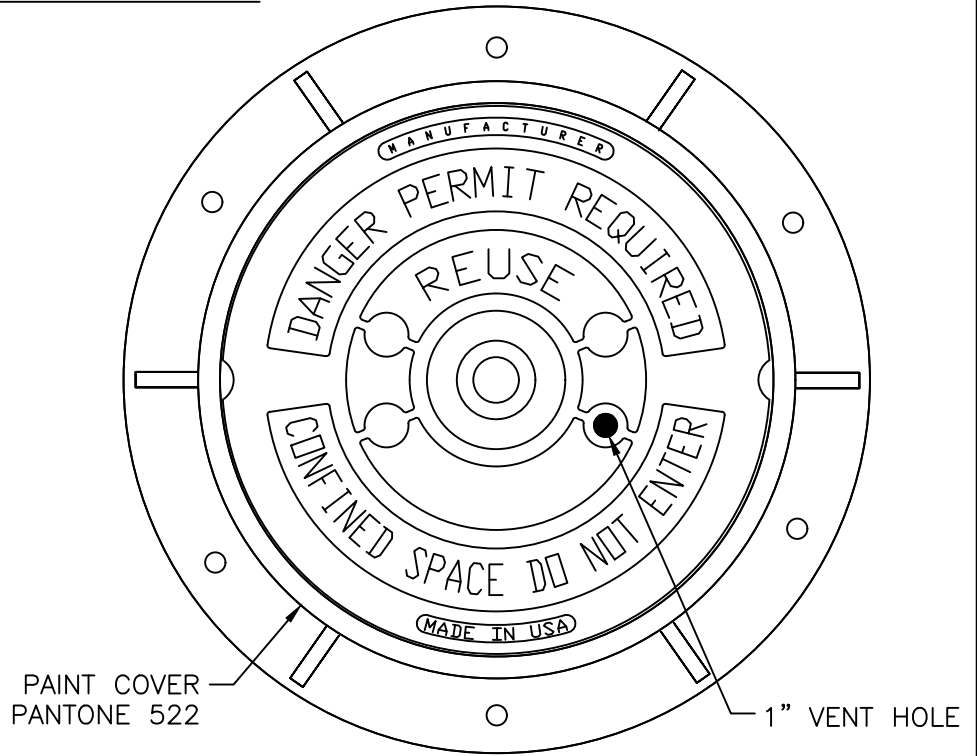
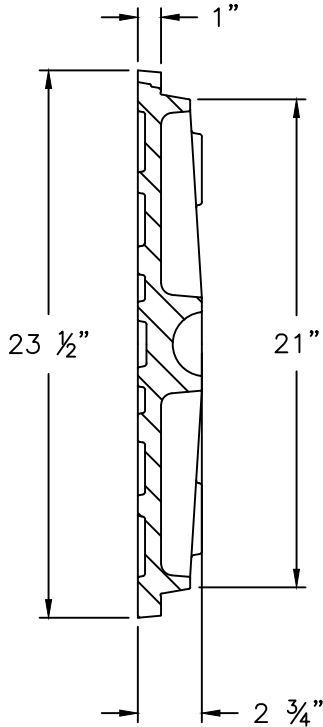
BILL OF MATERIALS

1	PRECAST MANHOLE, SEE STANDARD DETAIL S-20
2	TRASH HOOD
3	2" AIR RELEASE VALVE
4	2" CURB STOP BALL VALVE
5	ADAPTER
6	2" MECHANICAL JOINT BRASS PIPE AND FITTINGS
7	2" TYPE "K", SOFT COPPER WITH FLARED ELBOW
8	CORPORATION COCK
9	6" DIAMETER DRAIN
10	GROUT, 1/8" TO 1'-0" MIN. SLOPE TO DRAIN
11	PIPE CAP
12	2" GATE VALVE

CITY OF RALEIGH
STANDARD DETAIL

REVISIONS	DATE: 01/18/2025	NOT TO SCALE
REUSE AIR RELEASE VALVE		
R-16		

MANHOLE FRAME AND COVER



LAGSHIELDS MAY ONLY BE USED
IN ROADWAY APPLICATIONS

5/8"x3" LAGSHIELD IN HOLE DRILLED INTO
CONE OR RING WITH ANCHOR SUNK TO
DESIGN DEPTH, AND 3/8"x3" HOT DIPPED
GALVANIZED LAG BOLT AND WASHER

NOTES:

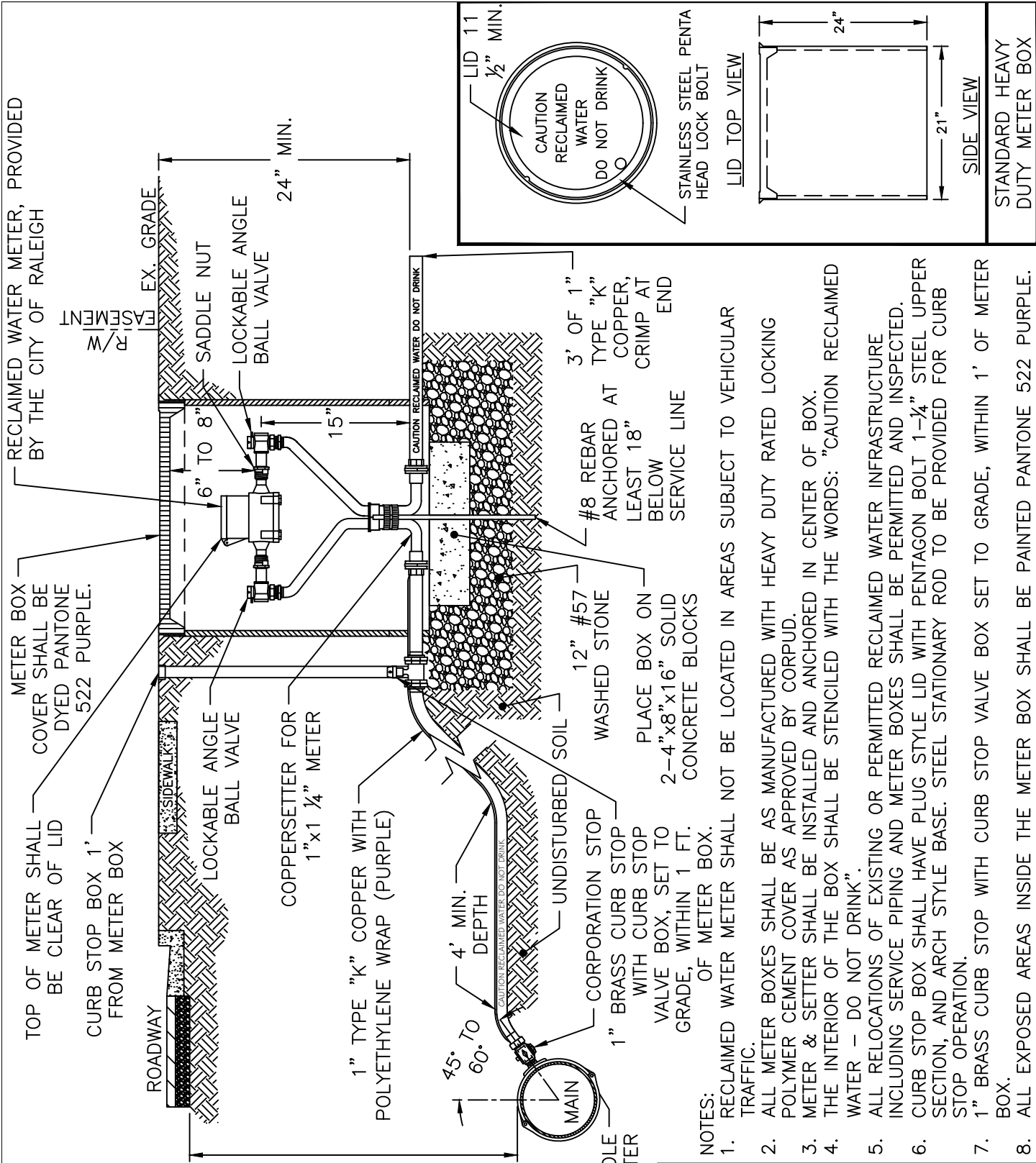
1. ALL MANHOLE FRAMES SHALL BE DOMESTICALLY CAST.
2. FRAME SHALL BE A MINIMUM WEIGHT OF 182 LBS.
3. COVER SHALL WEIGH A MIN. OF 120 LBS.
4. MANHOLES WITHIN PAVED SURFACES SHALL BE CONSTRUCTED ACCORDANCE WITH DETAIL S-29.

CITY OF RALEIGH
STANDARD DETAIL

REVISIONS	DATE: 01/18/2025	NOT TO SCALE

STANDARD MANHOLE COVER

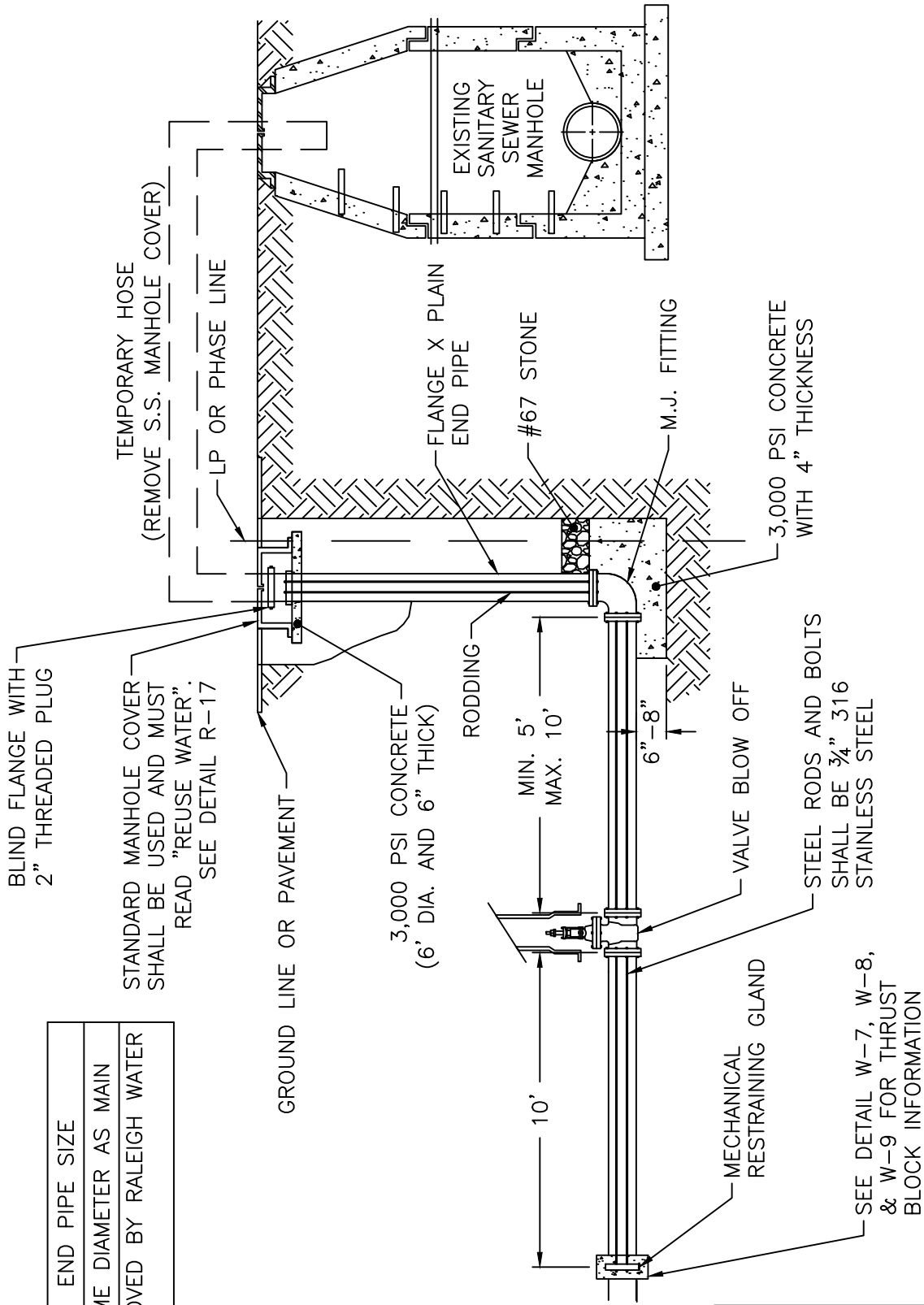
R-17



CITY OF RALEIGH STANDARD DETAIL		
REVISIONS	DATE: 01/18/2025	NOT TO SCALE
STANDARD 1" RECLAIMED WATER SERVICE AND METER BOX INSTALLATION		
R-18		

- NOTES:
1. RECLAIMED WATER METER SHALL NOT BE LOCATED IN AREAS SUBJECT TO VEHICULAR TRAFFIC.
 2. ALL METER BOXES SHALL BE AS MANUFACTURED WITH HEAVY DUTY RATED LOCKING POLYMER CEMENT COVER AS APPROVED BY CORPUD.
 3. METER & SETTER SHALL BE INSTALLED AND ANCHORED IN CENTER OF BOX.
 4. THE INTERIOR OF THE BOX SHALL BE STENCILED WITH THE WORDS: "CAUTION RECLAIMED WATER - DO NOT DRINK".
 5. ALL RELOCATIONS OF EXISTING OR PERMITTED RECLAIMED WATER INFRASTRUCTURE INCLUDING SERVICE PIPING AND METER BOXES SHALL BE PERMITTED AND INSPECTED.
 6. CURB STOP BOX SHALL HAVE PLUG STYLE LID WITH PENTAGON BOLT 1-1/4" STEEL UPPER SECTION, AND ARCH STYLE BASE. STEEL STATIONARY ROD TO BE PROVIDED FOR CURB STOP OPERATION.
 7. 1" BRASS CURB STOP WITH CURB STOP VALVE BOX SET TO GRADE, WITHIN 1' OF METER BOX.
 8. ALL EXPOSED AREAS INSIDE THE METER BOX SHALL BE PAINTED PANTONE 522 PURPLE.

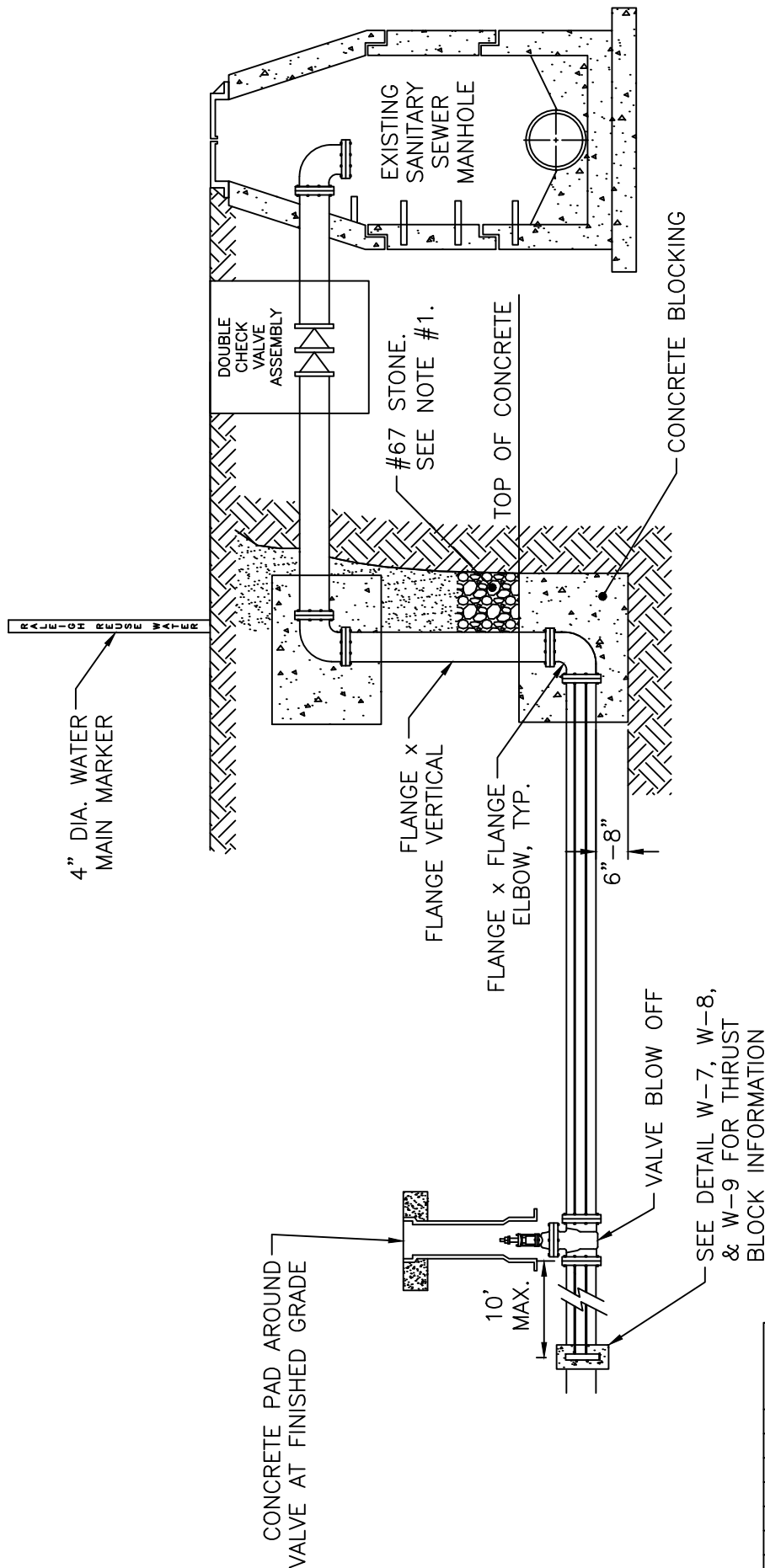
MAIN SIZE	END PIPE SIZE
6" - 12"	SAME DIAMETER AS MAIN
≥ 16"	APPROVED BY RALEIGH WATER



SEE DETAIL W-7, W-8,
& W-9 FOR THRUST
BLOCK INFORMATION

CITY OF RALEIGH		
STANDARD DETAIL		
REVISIONS	DATE: 01/18/2025	NOT TO SCALE
	TEMPORARY REUSE MAIN BLOW OFF ASSEMBLY	
R-19		

NOTE:
NO ROD COUPLINGS ALLOWED.



NOTES:

1. DRILL 1/4" WEEP HOLE FOR STACK DRAINAGE INTO STONE.
2. DOUBLE 3/4" BRIDLE RODS ON BOTH SIDES.
3. INSTALL WATER MAIN MARKER AT R/W OR P/L TO LOCATE MAIN.
4. 3/4" RODS AND BOLTS TO BE HOT DIPPED GALVANIZED.
5. END PIPE SIZE SHALL BE SAME AS MAIN SIZE.
6. APPROVED DOUBLE CHECK DEVICES ARE LOCATED AT END OF WATER MATERIALS SECTION.

CITY OF RALEIGH
STANDARD DETAIL

REVISIONS	DATE: 01/18/2025	NOT TO SCALE
-----------	------------------	--------------

PERMANENT REUSE MAIN
BLOW OFF ASSEMBLY

R-20