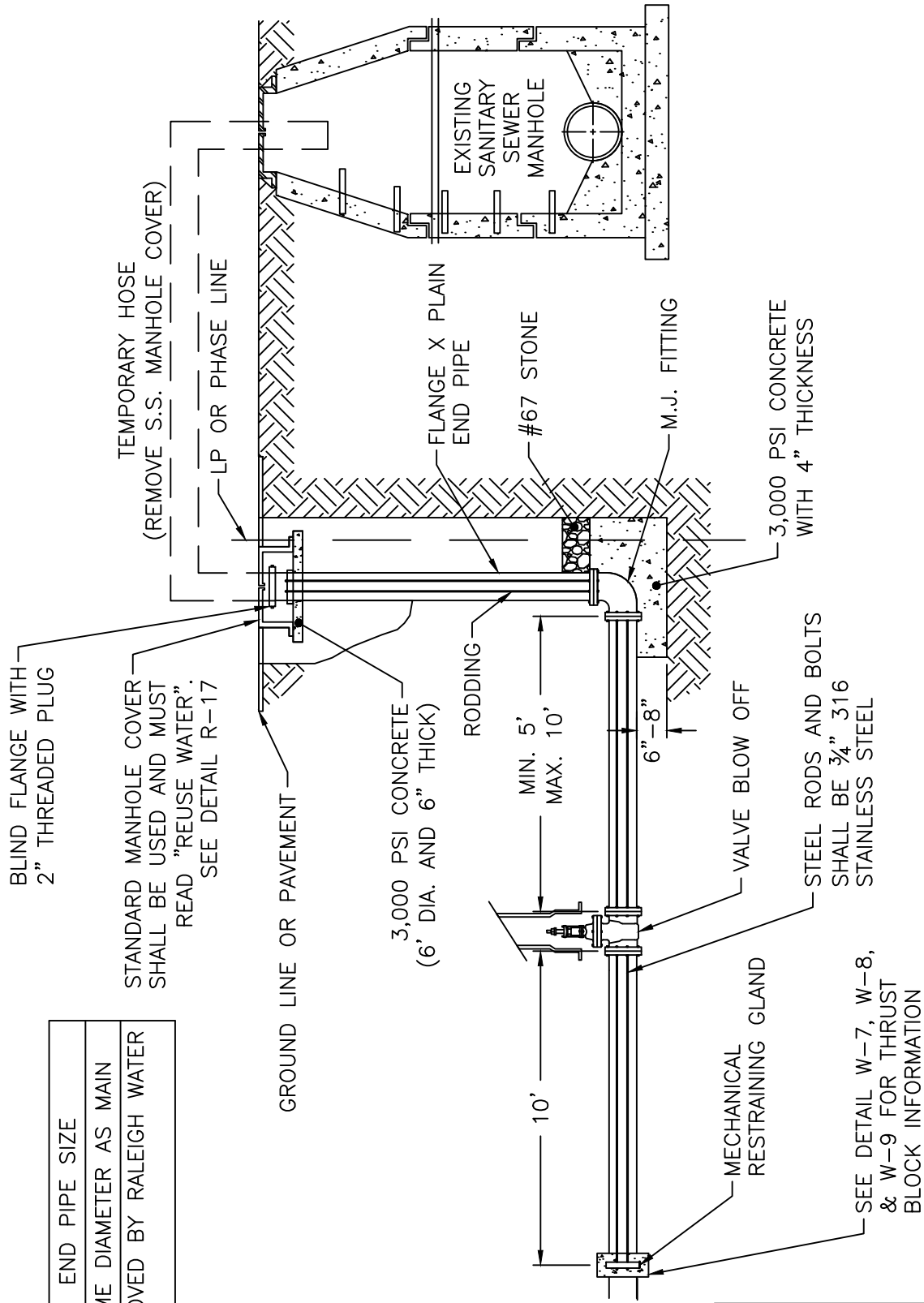


MAIN SIZE	END PIPE SIZE
6" - 12"	SAME DIAMETER AS MAIN
≥ 16"	APPROVED BY RALEIGH WATER



SEE DETAIL W-7, W-8,
& W-9 FOR THRUST
BLOCK INFORMATION

NOTE:
NO ROD COUPLINGS ALLOWED.

CITY OF RALEIGH		
STANDARD DETAIL		
REVISIONS	DATE: 01/18/2025	NOT TO SCALE
	TEMPORARY REUSE MAIN BLOW OFF ASSEMBLY	
R-19		