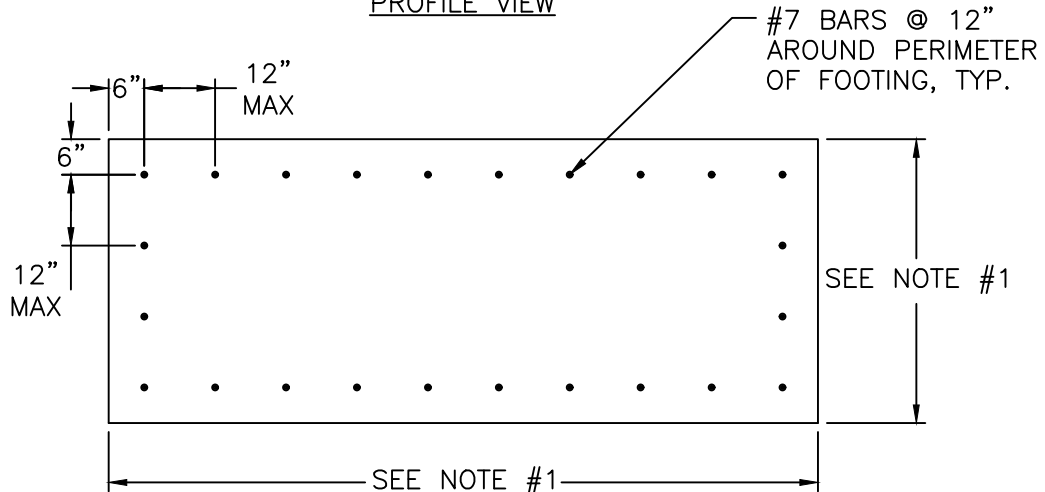


PROFILE VIEW



PLAN VIEW

NOTES:

1. GEOMETRY OF FOOTING SHALL MATCH GEOMETRY OF CONCRETE PIERS WITH HEIGHT OF 6 FEET OR LESS AS PER DETAIL S-14.
2. NON-SHRINK GROUT SHALL BE "EUCO-N-S" BY THE EUCLID CHEMICAL COMPANY; "MASTERFLOW 713" BY MASTER BULDERS, OR EQUAL.

**CITY OF RALEIGH**  
**STANDARD DETAIL**

REVISIONS	DATE: 01/18/2025	NOT TO SCALE

AERIAL PIPE CROSSING  
CONCRETE PIER  
ON BEDROCK

**S-17**