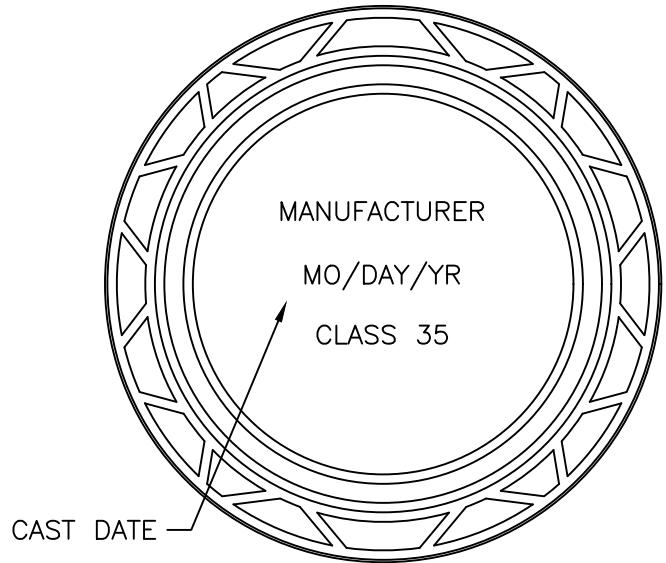
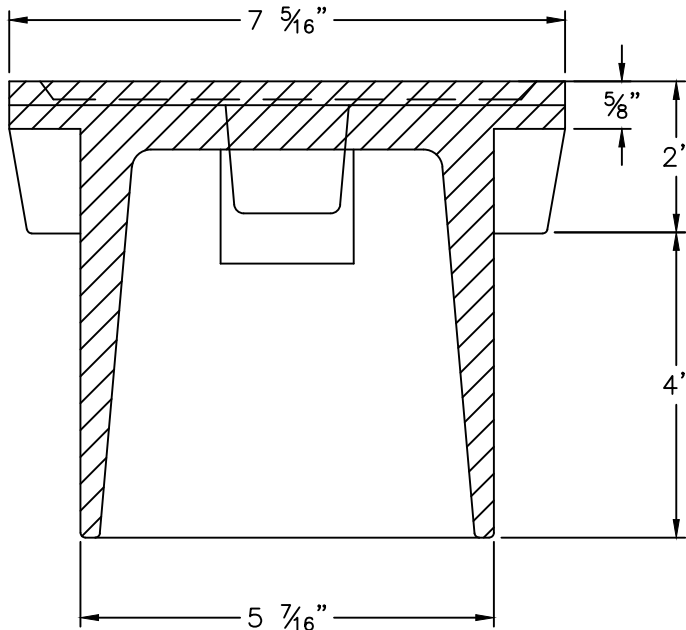


PLAN VIEW



BOTTOM VIEW



SECTION VIEW

NOTE:

1. "WATER" LETTERING MUST BE 1" RAISED (RECESSED FLUSH).
2. VALVE COVER SHALL BE DOMESTICALLY CAST.
3. COVER MUST HAVE A MINIMUM WEIGHT OF 25 POUNDS.
4. COVER MUST BE CLASS 35 OR GREATER.
5. COVER MUST MEET OR EXCEED AASHTO H-20 LOAD REQUIREMENTS.

CITY OF RALEIGH STANDARD DETAIL		
REVISIONS	DATE: 01/18/2025	NOT TO SCALE
	5 1/4" VALVE BOX DROP LID WITH 4" SKIRT	
	W-18	