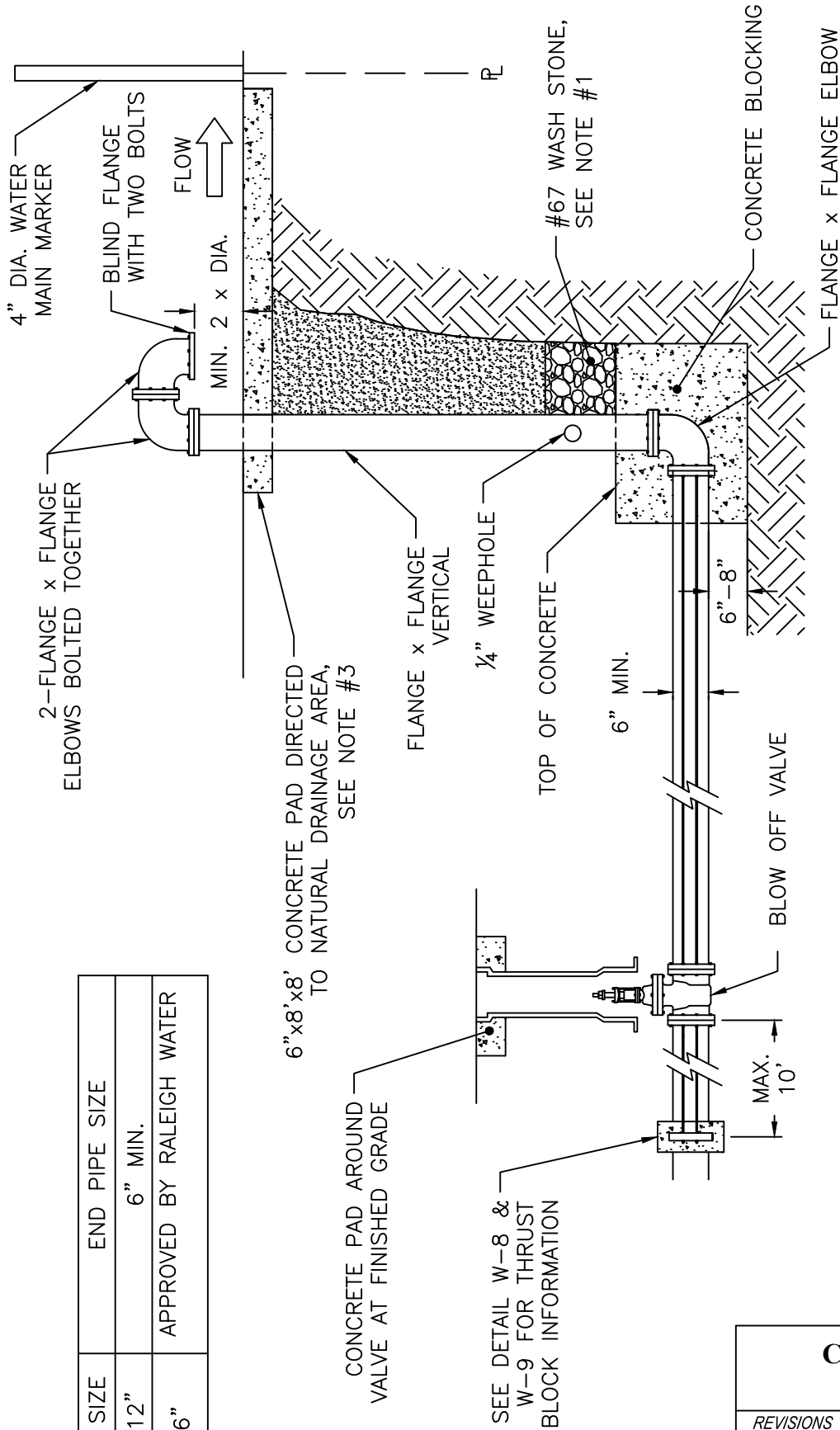


MAIN SIZE	END PIPE SIZE
6" - 12"	6" MIN.
≥16"	APPROVED BY RALEIGH WATER



NOTES:

1. DRILL 1/4" WEEP HOLE FOR STACK DRAINAGE INTO STONE.
2. DOUBLE 3/4" BRIDLE RODS ON BOTH SIDES.
3. A RIP-RAP SWALE FROM FROM CONCRETE SPLASH PAD TO POSITIVE DRAINAGE AREA IS REQUIRED.
4. BOTTOM 90° ELBOW SHALL HAVE BLIND FLANGE ATTACHED WITH TWO BOLTS.
5. INSTALL WATER MAIN MARKER AT R/W OR P/L TO LOCATE MAIN.
6. BURIED 3/4" RODS AND BOLTS TO BE 316 STAINLESS STEEL.
7. END PIPE SIZE 6" MIN. OR AS APPROVED BY PUBLIC UTILITIES.

**CITY OF RALEIGH
STANDARD DETAIL**

REVISIONS DATE: 01/18/2025 NOT TO SCALE

PERMANENT WATER MAIN
BLOW OFF ASSEMBLY

W-22