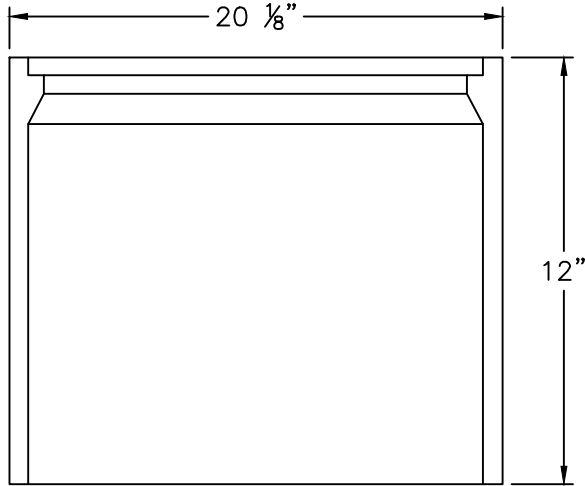
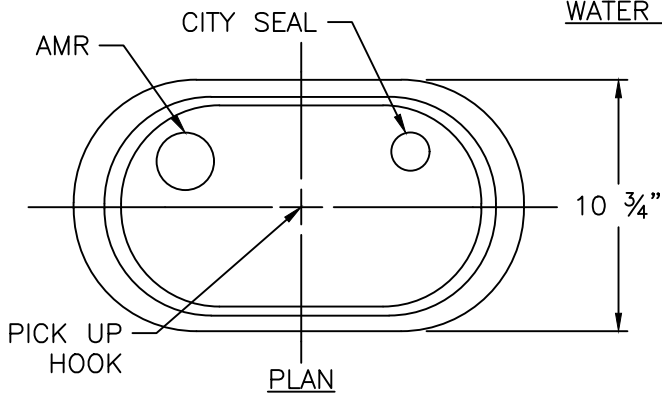


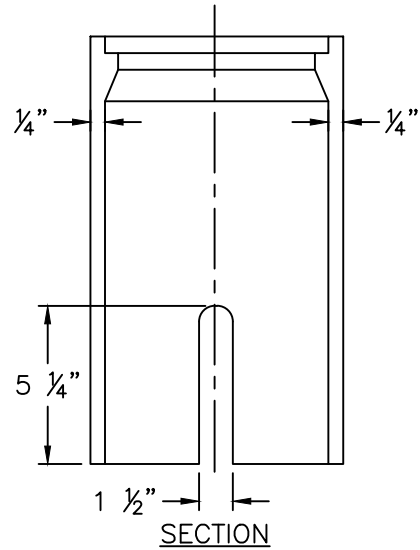
WATER METER BOX



ELEVATION

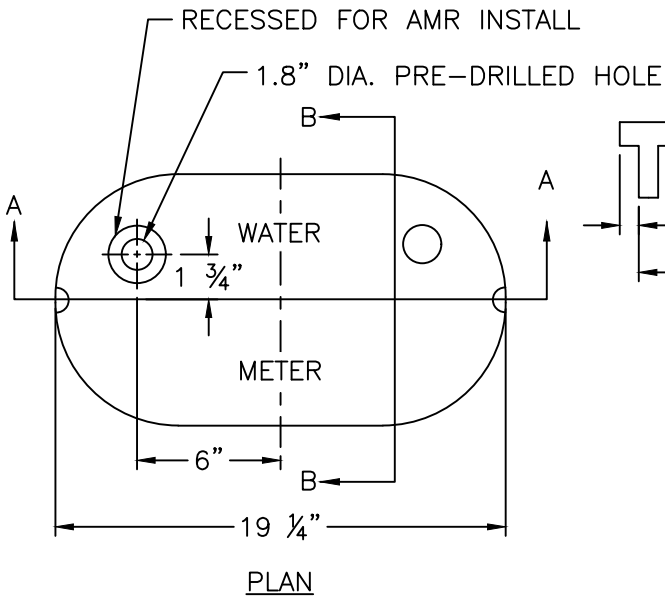
NOTES:

1. COVER WEIGHT: 13 LBS ± 5%.
2. LIDS TO BE COATED WITH BITUMINOUS COAL TAR COATING.
3. HOLE SHALL BE FITTED WITH A METAL GROMMET.
4. BOXES AND LIDS MUST BE MANUFACTURED FROM THE SAME DOMESTIC FOUNDRY.
5. HEIGHT ADJUSTMENTS ALLOWED BY PRECAST RISERS OR BRICK AND MORTAR. DRY STACKING OF BLOCK IS NOT ALLOWED.

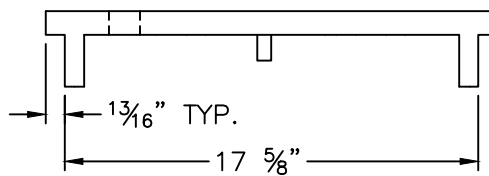


SECTION

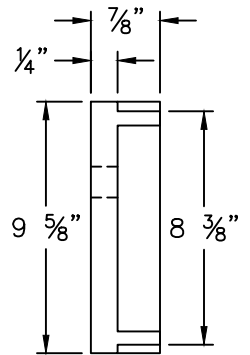
WATER METER COVER



PLAN



SECTION A-A



SECTION B-B

**CITY OF RALEIGH**  
**STANDARD DETAIL**

REVISIONS	DATE: 01/18/2025	NOT TO SCALE
	WATER METER BOX	
<b>W-25</b>		