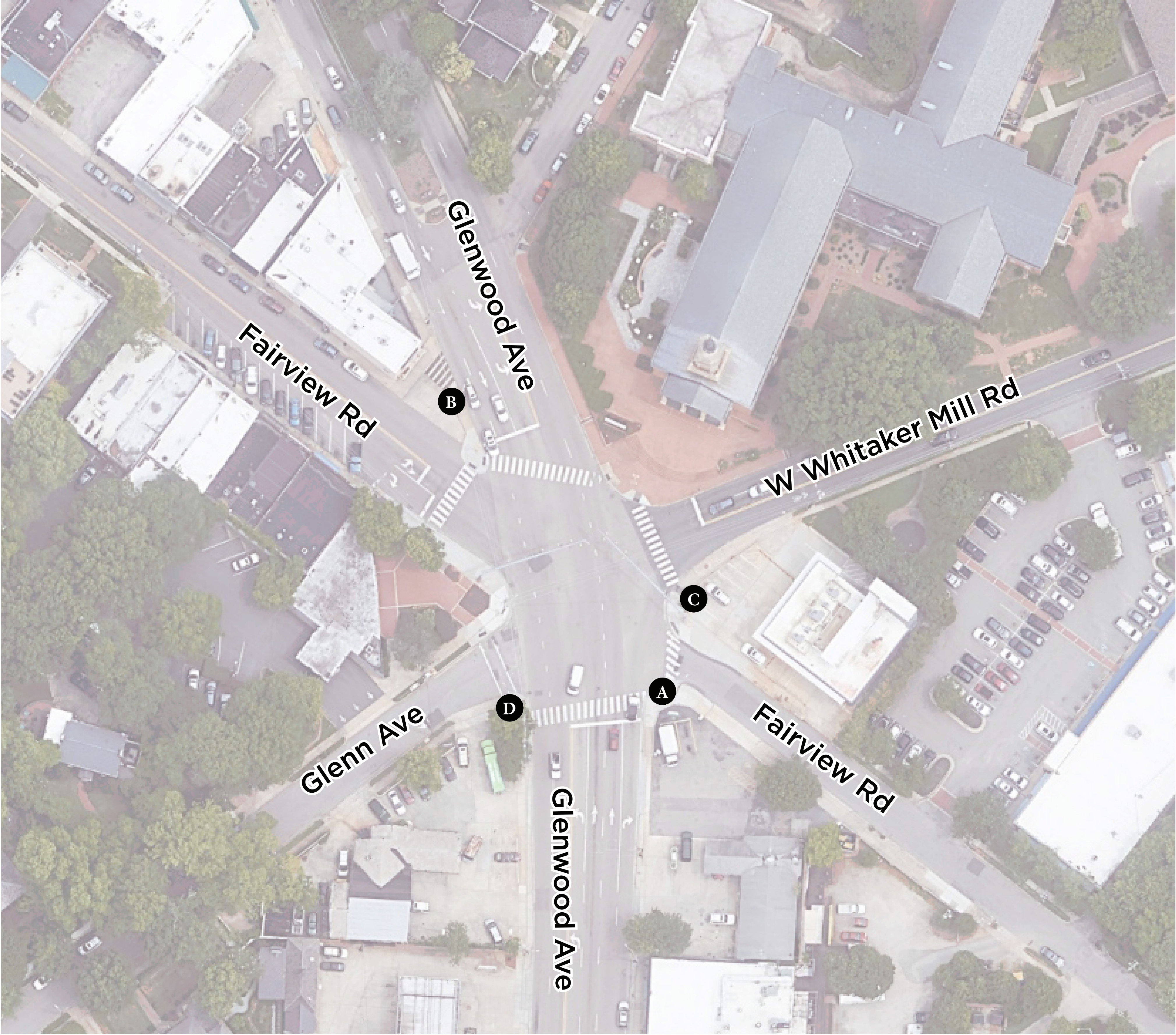


# Five Points Streetscape and Safety Study

## No Build

Baseline for assessing other concepts

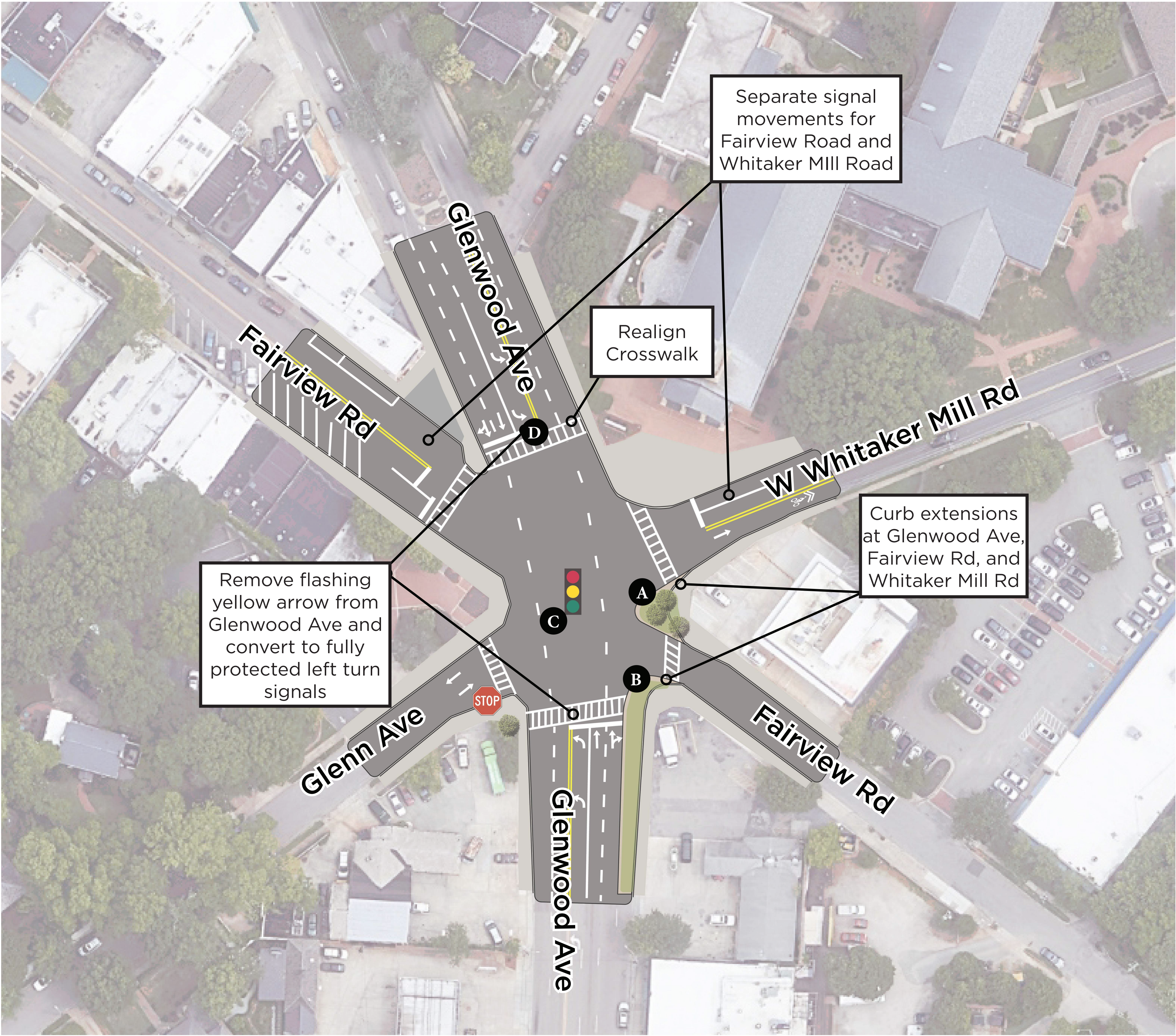




# Five Points Streetscape and Safety Study

## Concept A. Short Term Improvements

Roadway space that is repurposed reduces vehicle speeds. Signals are timed to allow Whitaker Mill and Fairview to operate separate from each other. These improvements may be completed together or individually.

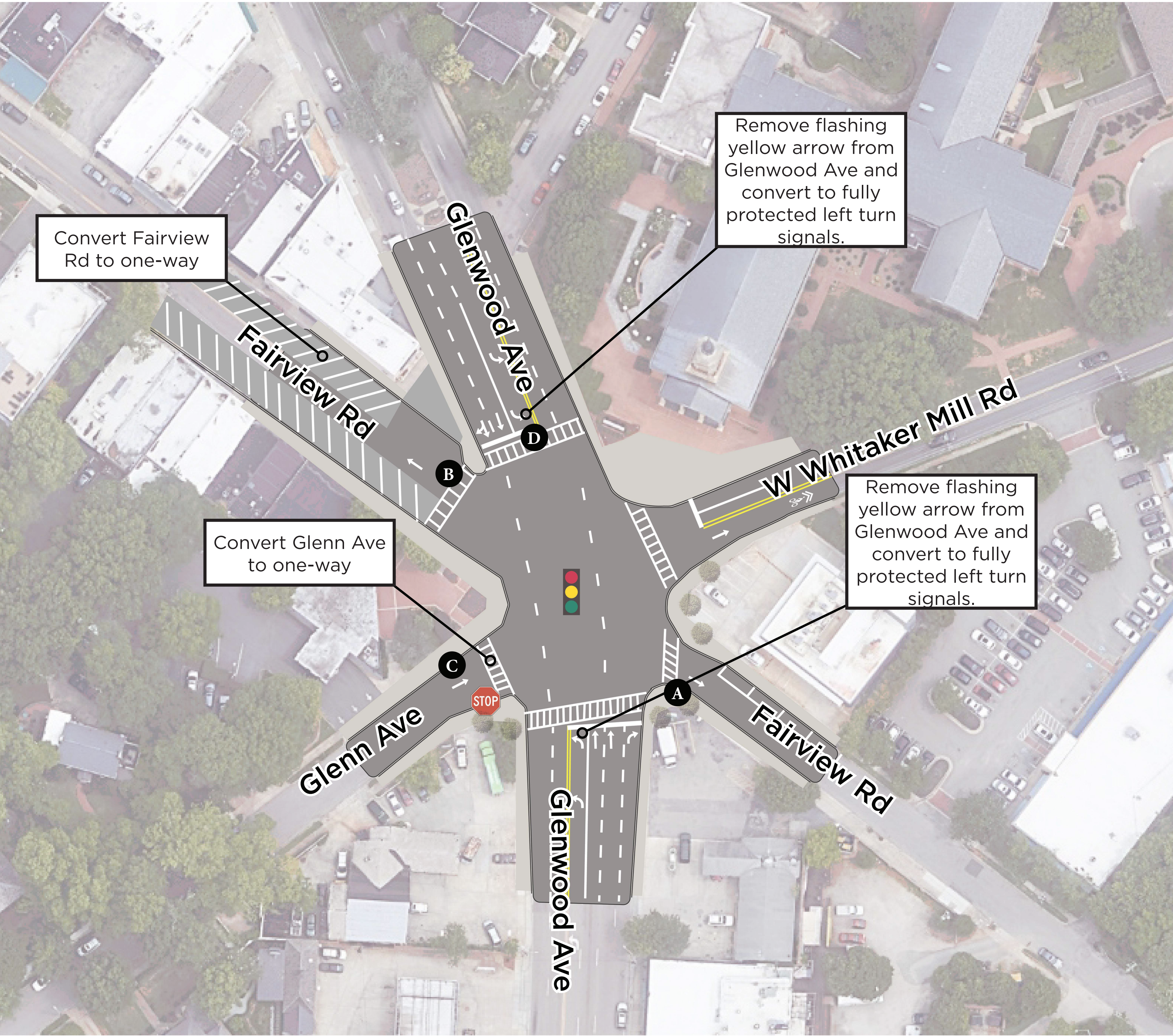




# Five Points Streetscape and Safety Study

## Concept B. Convert Side Streets to One-Way

Switching streets to one-way reduces the number of vehicles that have to cross paths making the intersection safer and more efficient for all travel modes.

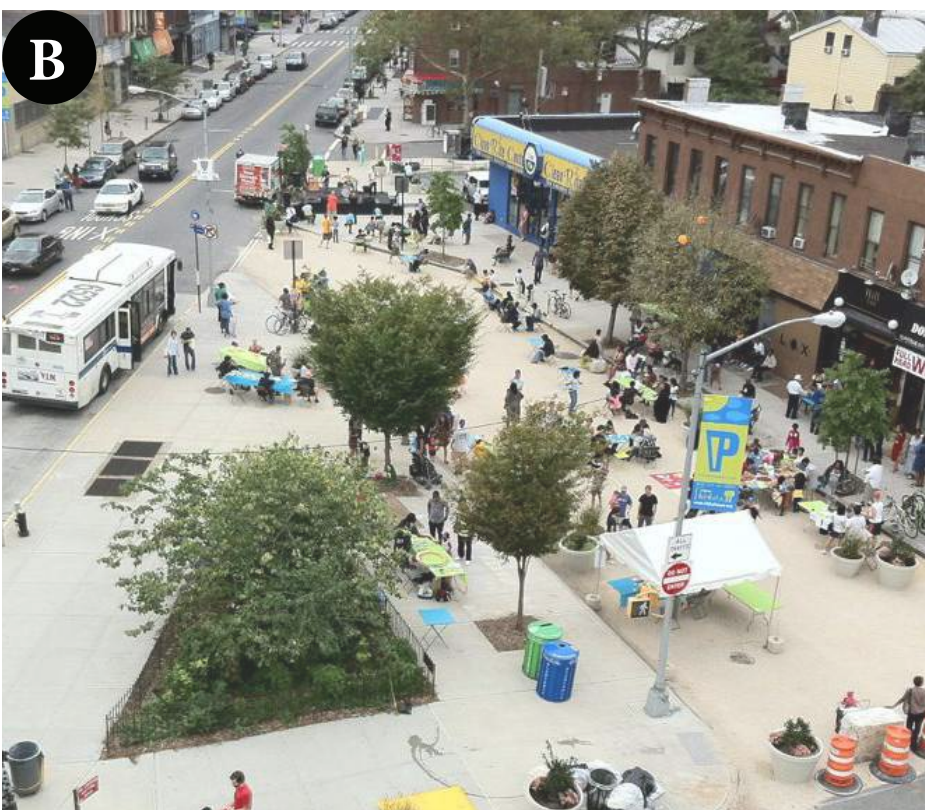
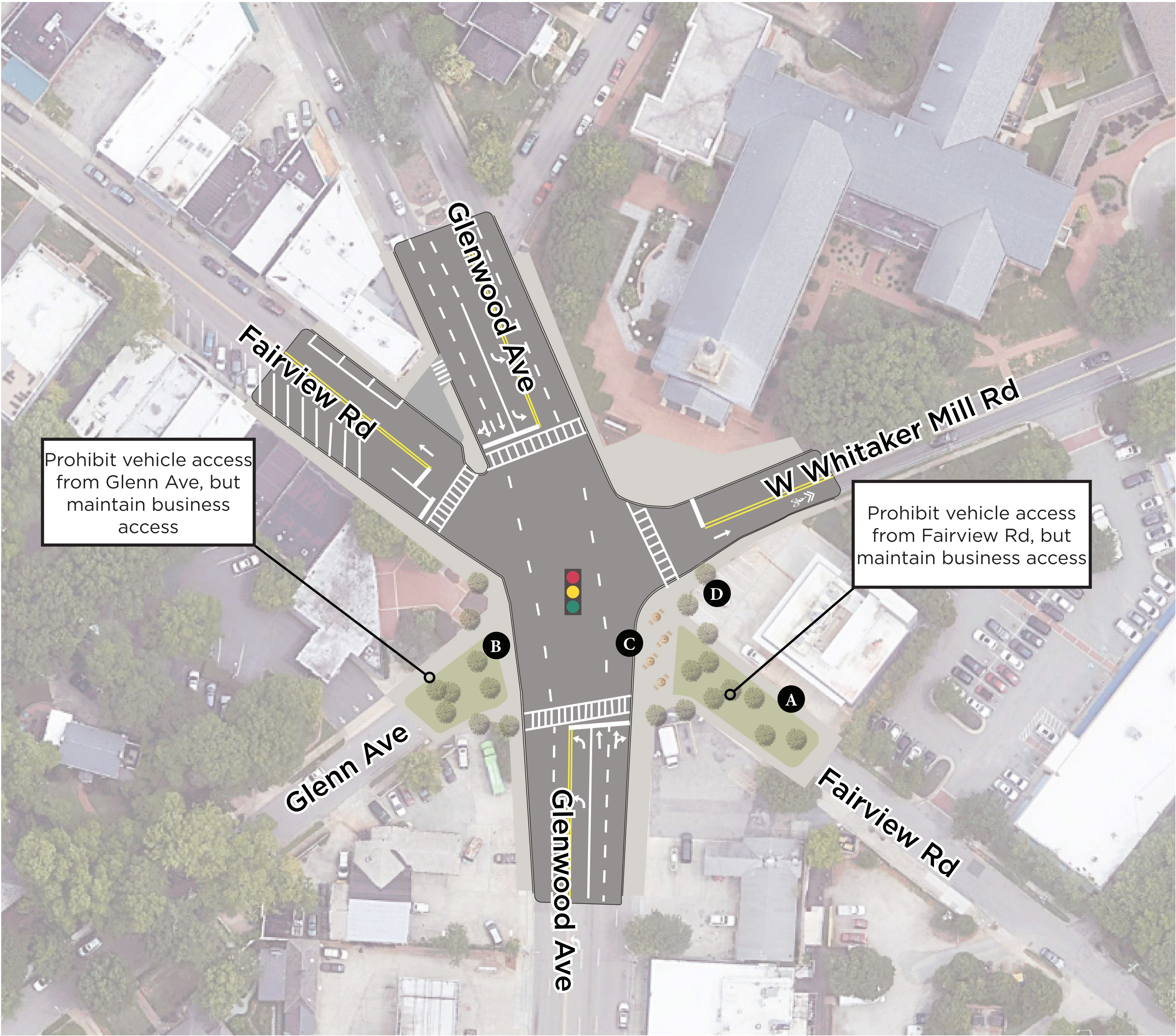




# Five Points Streetscape and Safety Study

## Concept C. Close Intersection Approaches

Removing legs of the intersection provides public space while reducing the number of vehicles that have to cross paths at the intersection making it safer.

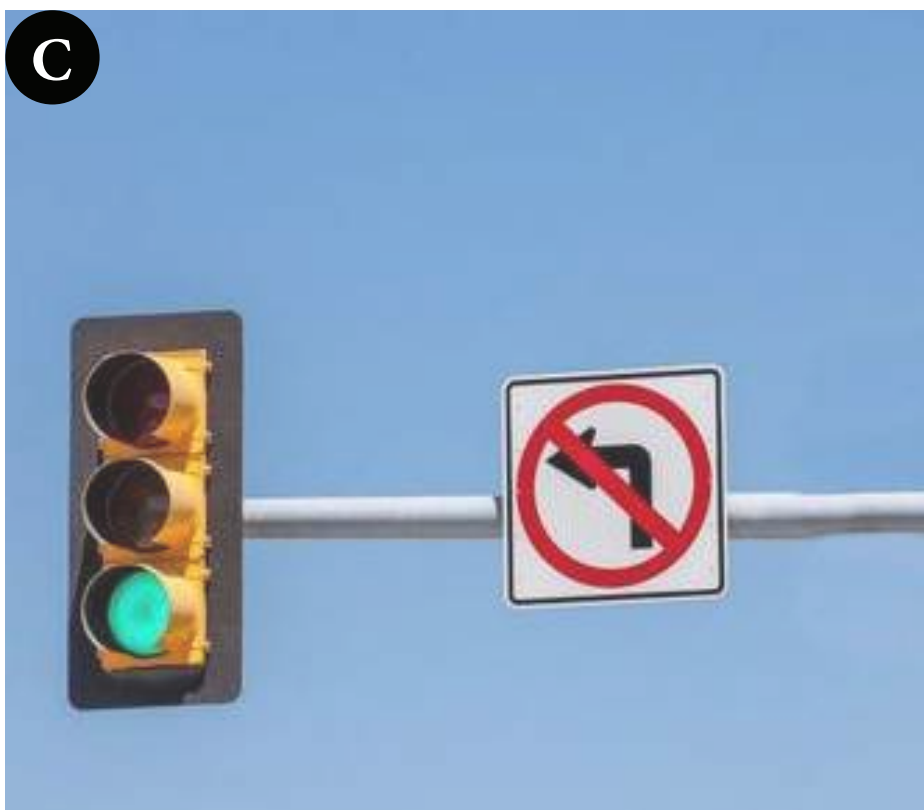
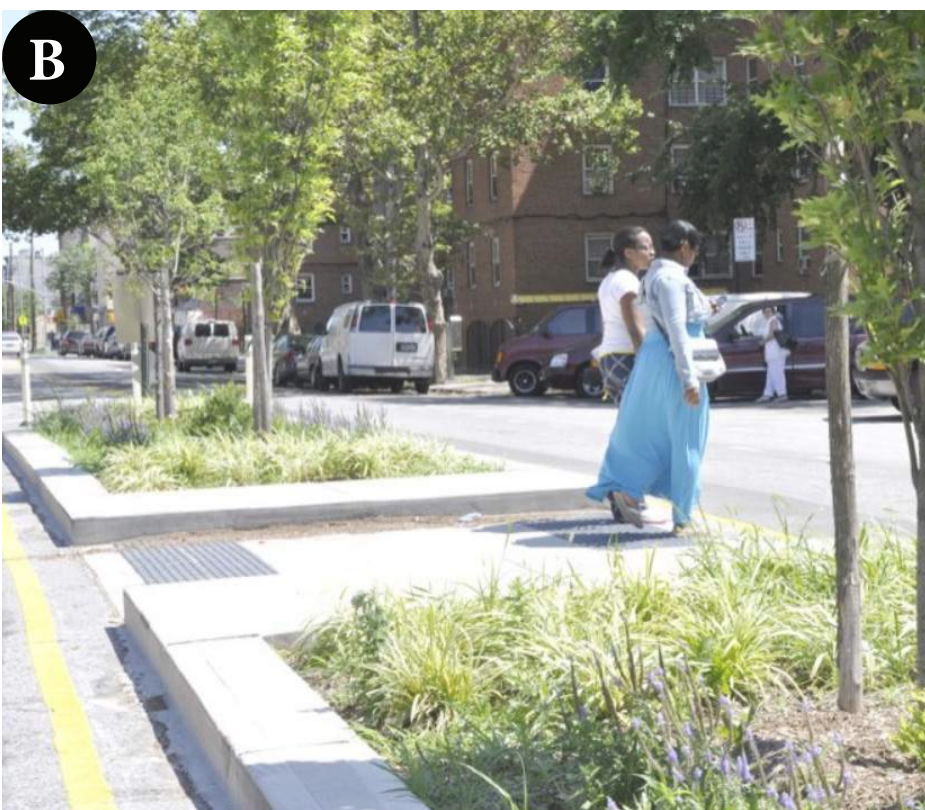
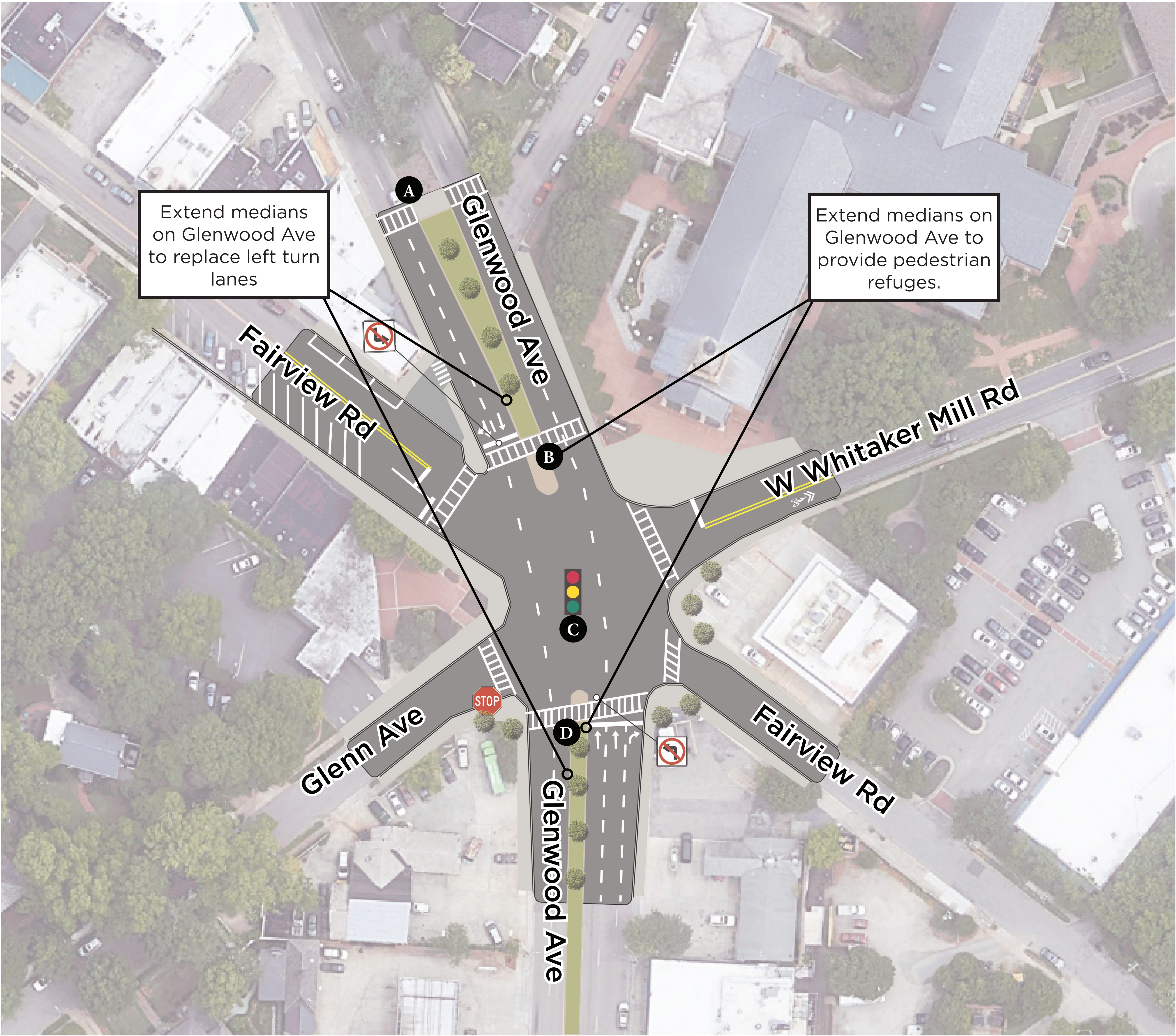




# Five Points Streetscape and Safety Study

## Concept D. Prohibit Left Turns from Glenwood Ave

Removing left turns from Glenwood Avenue reduces the risk of side-impact crashes at the intersection making it much safer and also more efficient for all travel modes.

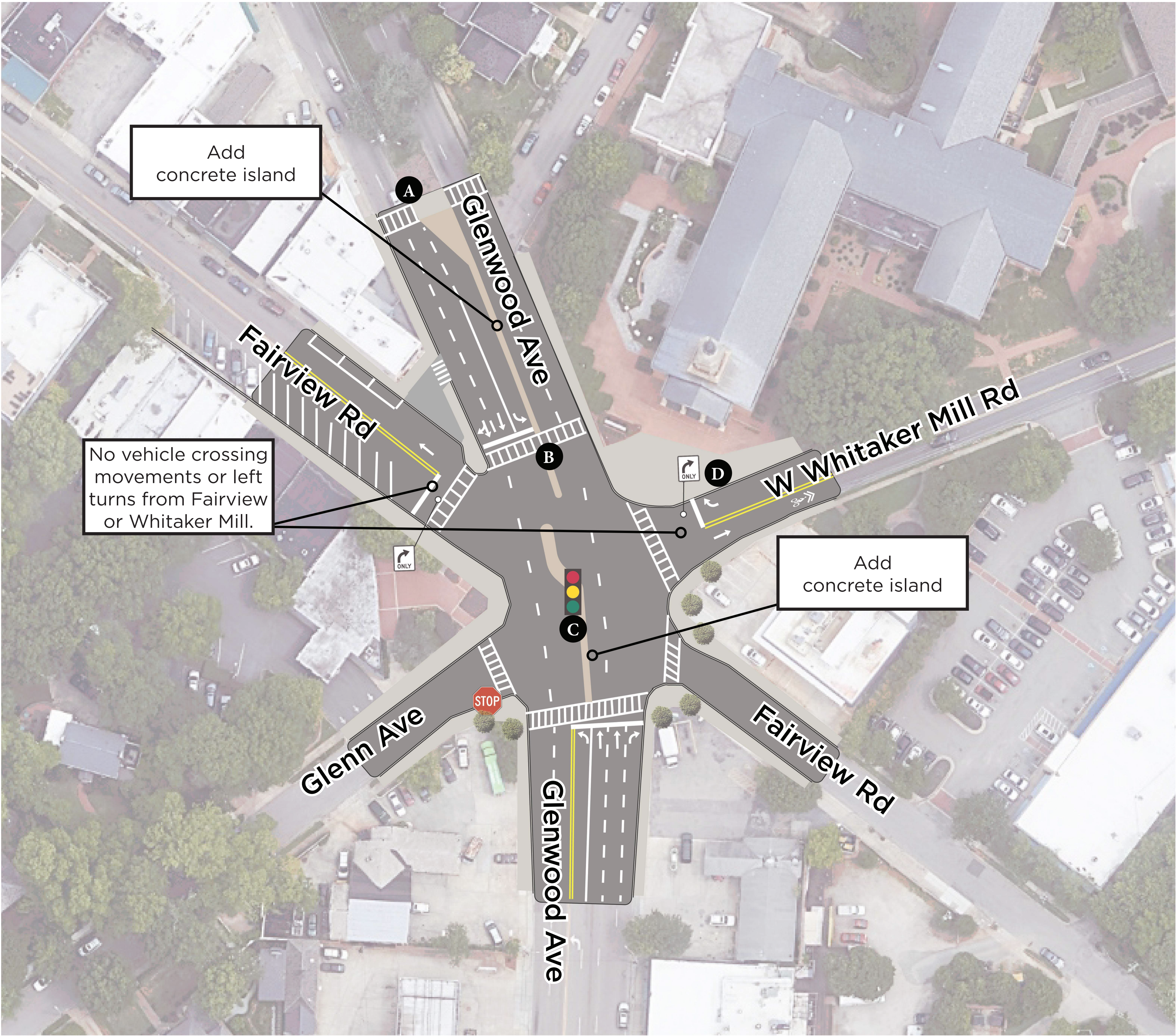




# Five Points Streetscape and Safety Study

## Concept E. Prohibit Vehicle Crossings of Glenwood Ave

Removing crossings of Glenwood Avenue reduces the number of vehicles that have to cross paths making the intersection safer. It also makes the intersection more efficient for all travel modes.

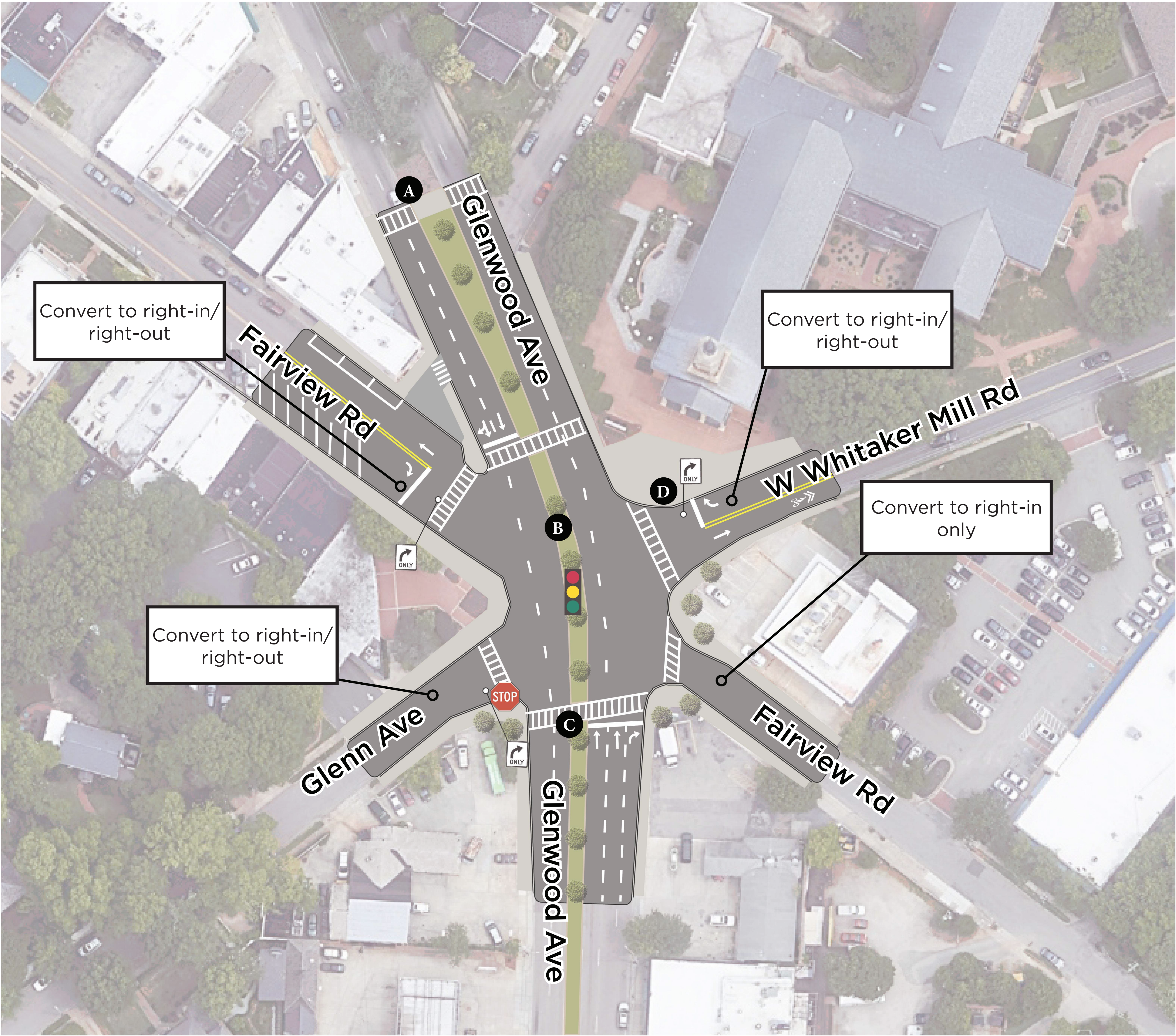




# Five Points Streetscape and Safety Study

## Concept F. Allow Right Turns Only

Allowing only right turns in Five Points keeps vehicles from crossing paths making the intersection much safer. It also makes the intersection more efficient for all travel modes.





# Five Points Streetscape and Safety Study

## Concept G. Single-Lane Roundabout

The single lane roundabout reduces vehicle conflicts, preserves all vehicle movements, and provides easy pedestrian crossings.





# Five Points Streetscape and Safety Study

## Concept H. Hybrid Single/Multilane Roundabout

The hybrid roundabout provides reduces vehicle conflicts and preserves all vehicle movements. Multilane enteries would be provided on Glenwood Ave but single lane exits would be provided on all streets.





# Five Points Streetscape and Safety Study

## Concept I. Multilane Roundabout

The multilane roundabout reduces vehicle conflicts, preserves all vehicle movements, and minimizes travel delay.

