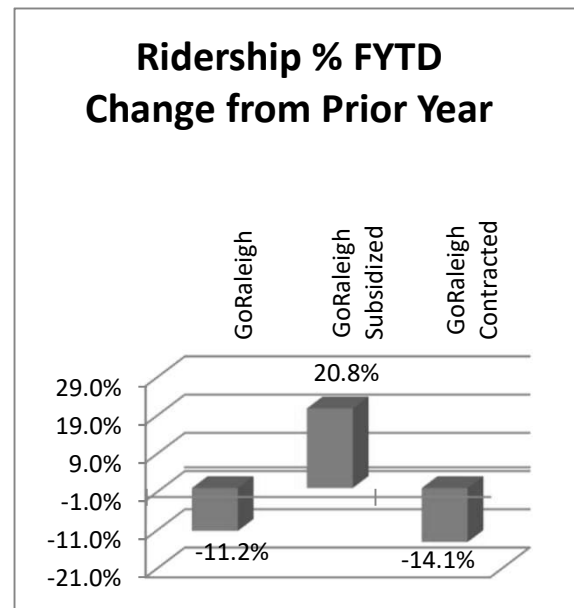
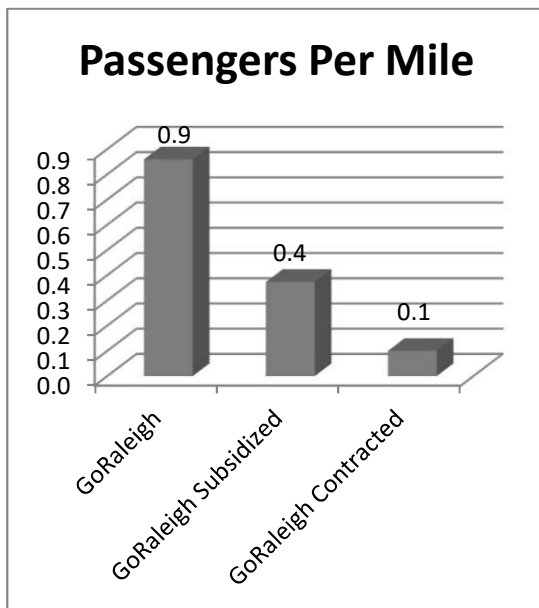
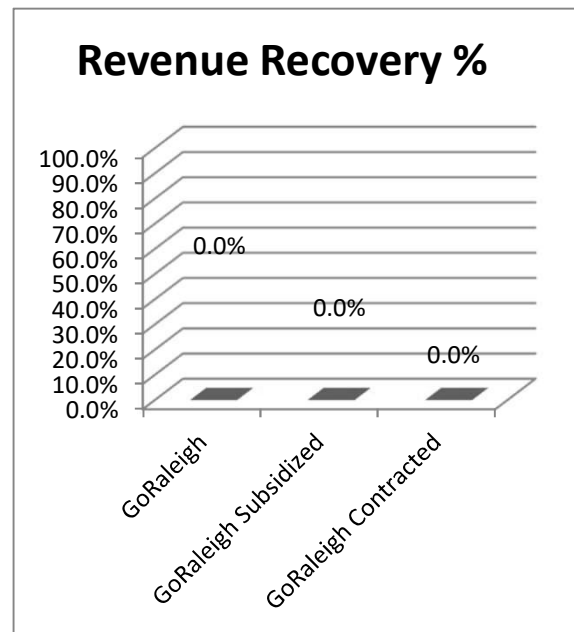
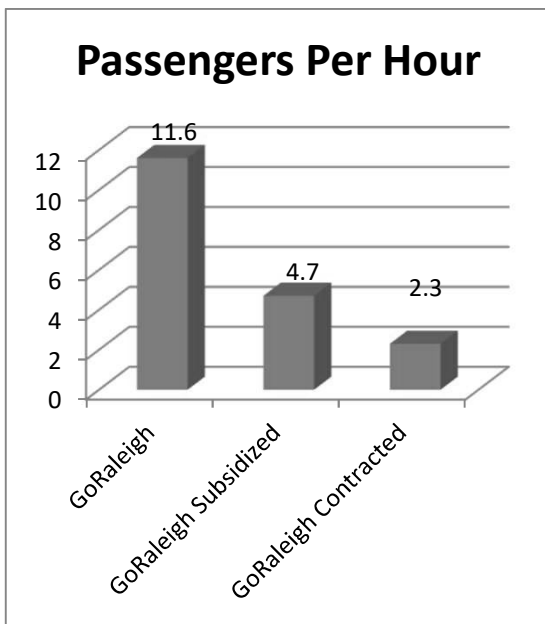




Raleigh

Performance Reports

May 2020



**GoRaleigh
Ridership Comparison By Route**

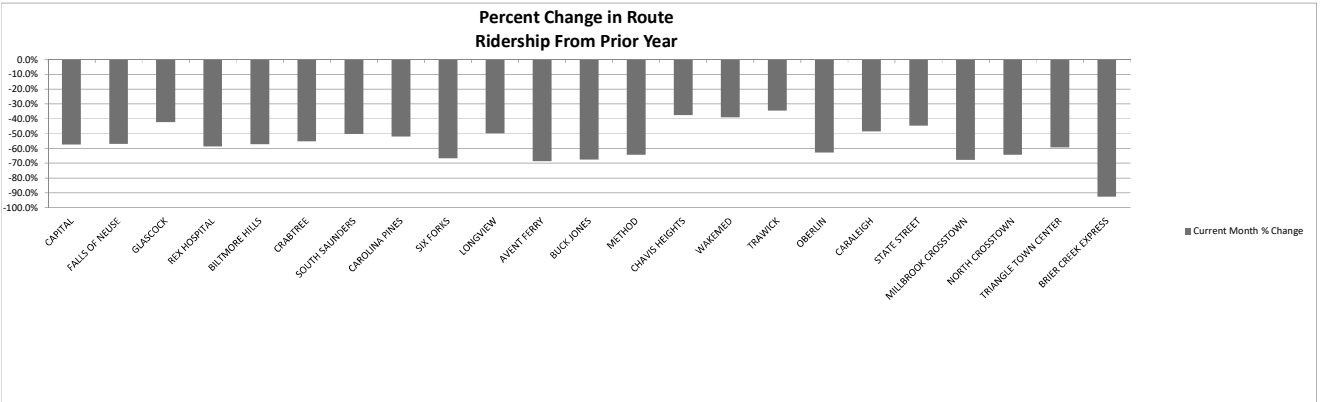
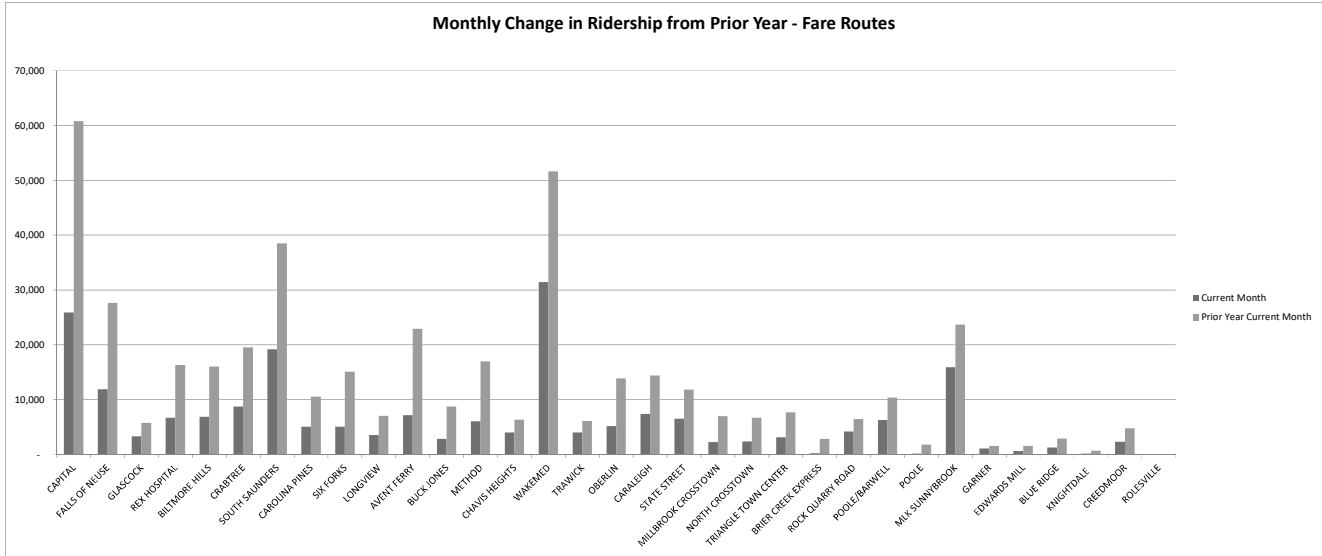
Current Month

May 2020

Fiscal Year-to-Date

Current Month	Prior Year Current Month	Current Month % Change	Rte #	Route	Current FYTD	Prior FYTD	FYTD % Change
25,898	60,801	-57.4%	1	CAPITAL	568,506	646,725	-12.1%
11,879	27,648	-57.0%	2	FALLS OF NEUSE	246,320	277,324	-11.2%
3,305	5,724	-42.3%	3	GLASCOCK	61,375	62,062	-1.1%
6,724	16,340	-58.8%	4	REX HOSPITAL	173,377	212,518	-18.4%
6,862	16,036	-57.2%	5	BILTMORE HILLS	136,903	175,381	-21.9%
8,747	19,565	-55.3%	6	CRABTREE	178,499	205,950	-13.3%
19,172	38,505	-50.2%	7	SOUTH SAUNDERS	362,001	388,571	-6.8%
5,037	10,512	-52.1%	7L	CAROLINA PINES	96,176	117,268	-18.0%
5,058	15,122	-66.6%	8	SIX FORKS	135,315	155,960	-13.2%
3,535	7,059	-49.9%	10	LONGVIEW	69,749	70,460	-1.0%
7,164	22,886	-68.7%	11	AVENT FERRY	209,705	247,285	-15.2%
2,825	8,752	-67.7%	11L	BUCK JONES	70,455	84,199	-16.3%
6,055	16,942	-64.3%	12	METHOD	152,833	174,293	-12.3%
3,981	6,369	-37.5%	13	CHAVIS HEIGHTS	53,925	63,888	-15.6%
31,416	51,664	-39.2%	15	WAKEMED	498,521	550,142	-9.4%
3,983	6,078	-34.5%	15L	TRAWICK	55,503	59,388	-6.5%
5,160	13,854	-62.8%	16	OBERLIN	127,573	139,366	-8.5%
7,420	14,417	-48.5%	21	CARALEIGH	162,232	139,497	16.3%
6,524	11,809	-44.8%	22	STATE STREET	112,566	123,670	-9.0%
2,246	6,970	-67.8%	23L	MILLBROOK CROSSTOWN	58,060	68,917	-15.8%
2,380	6,668	-64.3%	24L	NORTH CROSSTOWN	53,393	70,458	-24.2%
3,133	7,692	-59.3%	25L	TRIANGLE TOWN CENTER	80,492	92,846	-13.3%
206	2,827	-92.7%	70X	BRIER CREEK EXPRESS	25,369	29,477	-13.9%
178,710	394,240	-54.7%		Total GoRaleigh Fare Routes	3,688,848	4,155,645	-11.2%
4,171	6,422	-35.1%	17	ROCK QUARRY ROAD	72,829	24,798	193.7%
6,288	10,373	-39.4%	18	POOLE/BARWELL	103,021	135,818	-24.1%
126	1,793	-93.0%	18S	POOLE	14,876	7,576	96.4%
15,891	23,692	-32.9%	19N	MLK SUNNYBROOK	252,842	189,374	33.5%
1,107	1,543	-28.3%	20	GARNER	32,179	15,337	109.8%
611	1,532	-60.1%	26	EDWARDS MILL	15,703	6,681	135.0%
1,249	2,911	-57.1%	27	BLUE RIDGE	27,730	11,251	146.5%
175	668	-73.8%	33	KNIGHTDALE	9,765	7,134	36.9%
2,308	4,743	-51.3%	36	CREEDMOOR	43,866	22,310	96.6%
793	10,503	-92.4%	50	R-LINE	90,380	128,604	-29.7%
96	400	-76.0%	55X	POOLE ROAD EXPRESS	4,640	4,261	8.9%
0	0	0.0%	401	ROLESVILLE	464	0	100.0%
32,815	64,580	-49.2%		Total GoRaleigh Subsidized Routes	668,295	553,144	20.8%
170	2,279	-92.5%	40X	WAKE TECH EXPRESS	41,858	45,396	-7.8%
920	2,553	-64.0%	62	WAKE FOREST LOOP	24,003	26,612	-9.8%
0	1,545	-100.0%	60X	WAKE FOREST EXPRESS	8,914	12,323	-27.7%
0	2,016	-100.0%	64X	ZEBULON / WENDELL EXPRESS	13,766	17,396	-20.9%
0	1,245	-100.0%	78X	FUQUAY VARINA EXPRESS	10,728	13,781	-22.2%
1,090	9,638	-88.7%		Total GoRaleigh Contract Routes	99,269	115,508	-14.1%
393	4,188	-91%		NC State Fair and Other	113,000	103,799	8.9%
213,008	472,646	-54.9%		Total	4,569,412	4,928,096	-7.3%

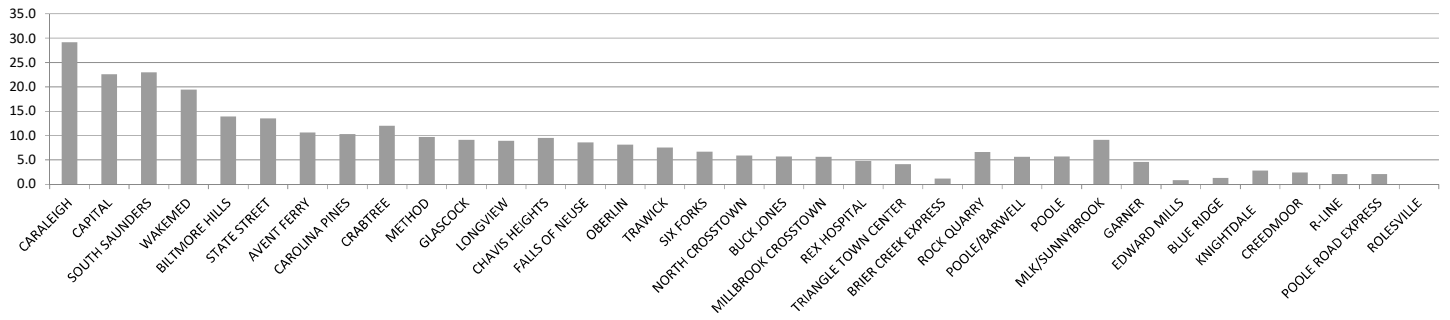
GoRaleigh
Ridership Comparison By Route
May 2020



**GoRaleigh
Rider per Hour by Route
Month of May 2020**

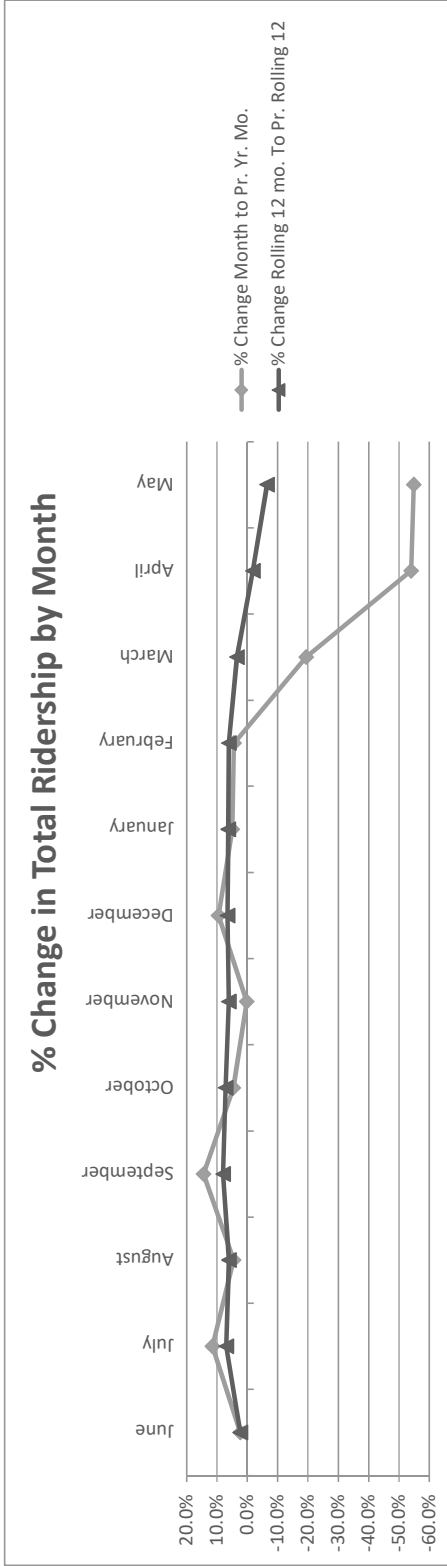
Riders Per Mile	Rank	Rte #	Route	Revenue Hrs.	Riders	Riders Per Hour
2.3	1	21	CARALEIGH	254	7,420	29.2
1.5	2	1	CAPITAL	1,145	25,898	22.6
1.6	3	7	SOUTH SAUNDERS	833	19,172	23.0
1.6	4	15	WAKEMED	1,622	31,416	19.4
1.2	5	5	BILTMORE HILLS	493	6,862	13.9
1.1	6	22	STATE STREET	482	6,524	13.5
0.8	7	11	AVENT FERRY	677	7,164	10.6
0.6	8	7L	CAROLINA PINES	490	5,037	10.3
0.9	9	6	CRABTREE	727	8,747	12.0
0.9	10	12	METHOD	623	6,055	9.7
0.9	11	3	GLASCOCK	362	3,305	9.1
1.0	12	10	LONGVIEW	396	3,535	8.9
1.1	13	13	CHAVIS HEIGHTS	421	3,981	9.5
0.6	14	2	FALLS OF NEUSE	1,384	11,879	8.6
0.7	15	16	OBERLIN	634	5,160	8.1
0.5	16	15L	TRAWICK	529	3,983	7.5
0.4	17	8	SIX FORKS	760	5,058	6.7
0.4	18	24L	NORTH CROSSTOWN	401	2,380	5.9
0.4	19	11L	BUCK JONES	494	2,825	5.7
0.3	20	23L	MILLBROOK CROSSTOWN	401	2,246	5.6
0.4	21	4	REX HOSPITAL	1,388	6,724	4.8
0.3	22	25L	TRIANGLE TOWN CENTER	769	3,133	4.1
0.0	23	70X	BRIER CREEK EXPRESS	177	206	1.2
0.9			Total GoRaleigh Pre Expansion Routes	15,462	178,710	11.6
0.5		17	ROCK QUARRY	629	4,171	6.6
0.4		18N	POOLE/BARWELL	1,114	6,288	5.6
0.3		18S	POOLE	22	126	5.7
0.7		19N	MLK/SUNNYBROOK	1,754	15,891	9.1
0.3		20	GARNER	241	1,107	4.6
0.1		26	EDWARD MILLS	773	611	0.8
0.1		27	BLUE RIDGE	986	1,249	1.3
0.2		33	KNIGHTDALE	62	175	2.8
0.2		36	CREEDMOOR	980	2,308	2.4
0.2		50	R-LINE	382	793	2.1
0.1		55X	POOLE ROAD EXPRESS	46	96	2.1
0.0		401	ROLESVILLE	22	0	0.0
0.4			Total GoRaleigh Subsidized Routes	7,010	32,815	4.7
0.0		40X	WAKE TECH EXPRESS	113	170	1.5
0.0		64X	ZEBULON / WENDELL EXPRESS	0	0	0.0
0.1		62	WAKE FOREST LOOP	366	920	2.5
0.0		60X	WAKE FOREST EXPRESS	0	0	0.0
0.0		78X	FUQUAY VARINA EXPRESS	0	0	0.0
0.1			Total GoRaleigh Contract Routes	480	1,090	2.3
0.7			Total All Routes	22,952	212,615	9.3

**Passengers Per Hour Current
Month For Fare Routes**



Go Raleigh
Change in Ridership - Rolling 12 Month Total

	Years		Years		% Change
	2017/2018	2018/2018	2019/2020	2019/2020	
Month of: May	441,149	472,646	213,008	213,008	-54.9%
Prior 12 Month Total Ending: May	5,078,487	5,353,991	5,005,346	5,005,346	-6.5%



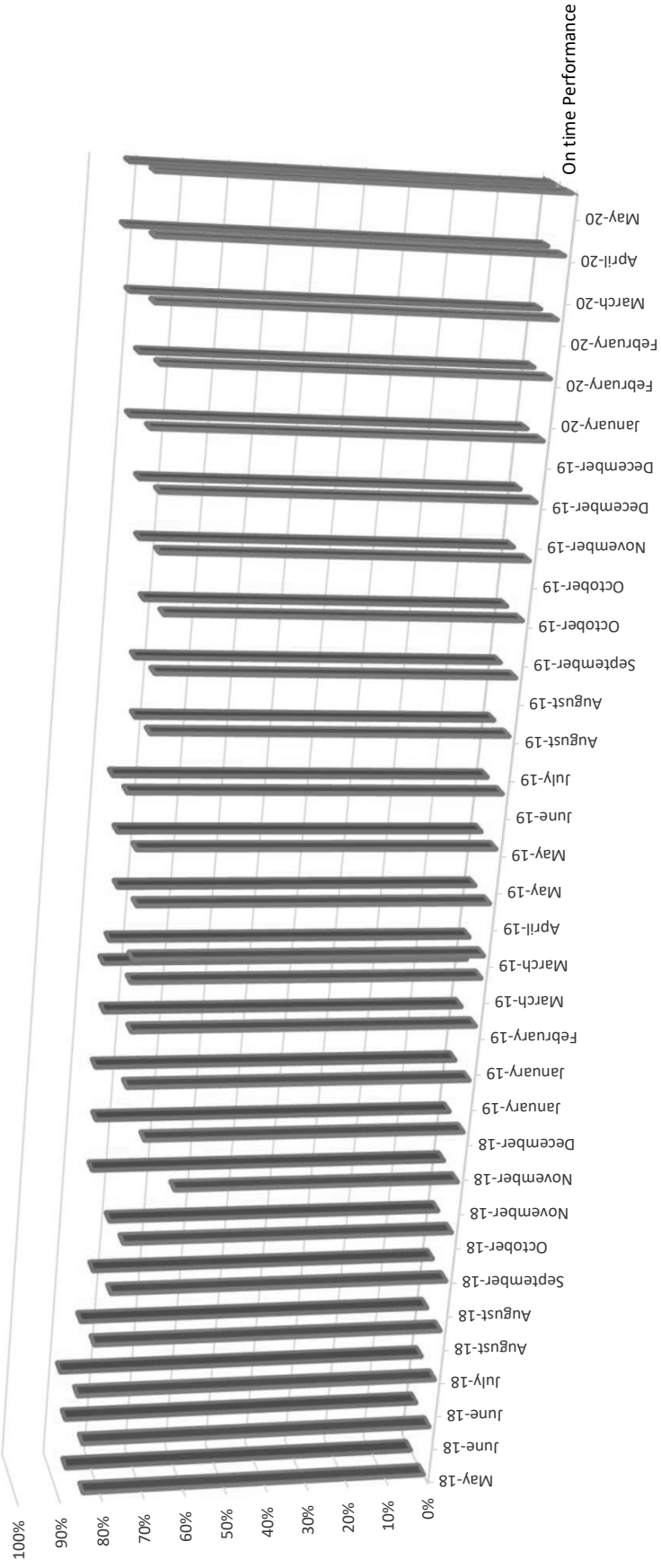
GoRaleigh Recovery and Cost By Route

Route Rank by Recovery % May 2020				
Rank	Route #	Route	Revenue	Recovery %
Passenger Subsidized Routes				
1	21	CARALEIGH	\$0	0.0%
2	15	WAKEMED	\$0	0.0%
3	1	CAPITAL	\$0	0.0%
4	7	SOUTH SAUNDERS	\$0	0.0%
5	11	AVENT FERRY	\$0	0.0%
6	12	METHOD	\$0	0.0%
7	22	STATE STREET	\$0	0.0%
8	5	BILTMORE HILLS	\$0	0.0%
9	10	LONGVIEW	\$0	0.0%
10	16	OBERLIN	\$0	0.0%
11	6	CRABTREE	\$0	0.0%
12	13	CHAVIS HEIGHTS	\$0	0.0%
13	2	FALLS OF NEUSE	\$0	0.0%
14	11L	BUCK JONES	\$0	0.0%
15	3	GLASCOCK	\$0	0.0%
16	4	REX HOSPITAL	\$0	0.0%
17	8	SIX FORKS	\$0	0.0%
18	7L	CAROLINA PINES	\$0	0.0%
19	25L	TRIANGLE TOWN CENTER	\$0	0.0%
20	24L	NORTH CROSSTOWN	\$0	0.0%
21	23L	MILLBROOK CROSSTOWN	\$0	0.0%
22	15L	TRAWICK	\$0	0.0%
23	70X	BRIER CREEK EXPRESS	\$0	0.0%
		Total GoRaleigh Fare Routes	\$0	0.0%
GoRaleigh Subsidized Routes				
	17	ROCK QUARRY	\$0	0.0%
	18	POOLE/BARWELL	\$0	0.0%
	18S	POOLE	\$0	0.0%
	19N	MLK/SUNNYBROOK	\$0	0.0%
	20	GARNER	\$0	0.0%
	26	EDWARD MILLS	\$0	0.0%
	27	BLUE RIDGE	\$0	0.0%
	33	KNIGHTDALE	\$0	0.0%
	36	CREEDMOOR	\$0	0.0%
	50	R-LINE	\$0	0.0%
	55X	POOLE ROAD EXPRESS	\$0	0.0%
	401	ROLESVILLE	\$0	0.0%
		Total GoRaleigh Subsidized	\$0	0.0%
Contract Routes:				
	78X	FUQUAY VARINA EXPRESS	\$0	0.0%
	62	WAKE FOREST LOOP	\$0	0.0%
	40X	WAKE TECH EXPRESS	\$0	0.0%
	64X	ZEBULON / WENDELL EXPRESS	\$0	0.0%
	60X	WAKE FOREST EXPRESS	\$0	0.0%
		Total GoRaleigh Contract	\$0	0.0%
Grand Total			\$0	0.0%

Route Rank by Mileage and Cost May 2020				
Rank	Route #	Route	Allocated Miles	Allocated Costs
Passenger Subsidized Routes				
1	15	WAKEMED	20,087	\$122,834
2	2	FALLS OF NEUSE	19,651	\$120,164
3	4	REX HOSPITAL	15,994	\$97,804
4	1	CAPITAL	17,588	\$107,551
5	8	SIX FORKS	11,976	\$73,235
6	25L	TRIANGLE TOWN CENTER	10,808	\$66,093
7	7	SOUTH SAUNDERS	11,757	\$71,895
8	6	CRABTREE	9,596	\$58,679
9	11	AVENT FERRY	9,388	\$57,407
10	15L	TRAWICK	8,429	\$51,541
11	11L	BUCK JONES	7,564	\$46,252
12	7L	CAROLINA PINES	7,948	\$48,602
13	23L	MILLBROOK CROSSTOWN	7,179	\$43,897
14	16	OBERLIN	6,937	\$42,420
15	22	STATE STREET	6,121	\$37,430
16	12	METHOD	6,428	\$39,306
17	5	BILTMORE HILLS	5,684	\$34,755
18	24L	NORTH CROSSTOWN	5,687	\$34,778
19	70X	BRIER CREEK EXPRESS	5,096	\$31,162
20	3	GLASCOCK	3,858	\$23,593
21	13	CHAVIS HEIGHTS	3,585	\$21,920
22	10	LONGVIEW	3,489	\$21,336
23	21	CARALEIGH	3,272	\$20,009
		Total GoRaleigh Fare Routes	208,122	\$1,272,664
GoRaleigh Subsidized Routes				
	17	ROCK QUARRY	7,733	\$47,285
	18	POOLE/BARWELL	14,294	\$87,406
	18S	POOLE	407	\$2,487
	19N	MLK/SUNNYBROOK	21,630	\$132,269
	20	GARNER	3,242	\$19,826
	26	EDWARD MILLS	8,827	\$53,976
	27	BLUE RIDGE	12,255	\$74,937
	33	KNIGHTDALE	1,089	\$6,660
	36	CREEDMOOR	12,458	\$76,182
	50	R-LINE	3,783	\$23,132
	55X	POOLE ROAD EXPRESS	1,607	\$9,824
	401	ROLESVILLE	637	\$3,894
		Total GoRaleigh Subsidized	87,961	\$537,878
Contract Routes:				
	78X	FUQUAY VARINA EXPRESS	0	\$0
	62	WAKE FOREST LOOP	7,279	\$44,511
	40X	WAKE TECH EXPRESS	3,629	\$22,190
	64X	ZEBULON / WENDELL EXPRESS	0	\$0
	60X	WAKE FOREST EXPRESS	0	\$0
		Total GoRaleigh Contract	10,908	\$66,702
Grand Total			306,991	\$1,877,244

Please note that total operating costs (without depreciation) are allocated to each route based upon the route mileage times the monthly average cost of \$6.11 per mile.

On Time Performance



■ On time Performance ■ Without Early Departures