



Green Bike Lanes

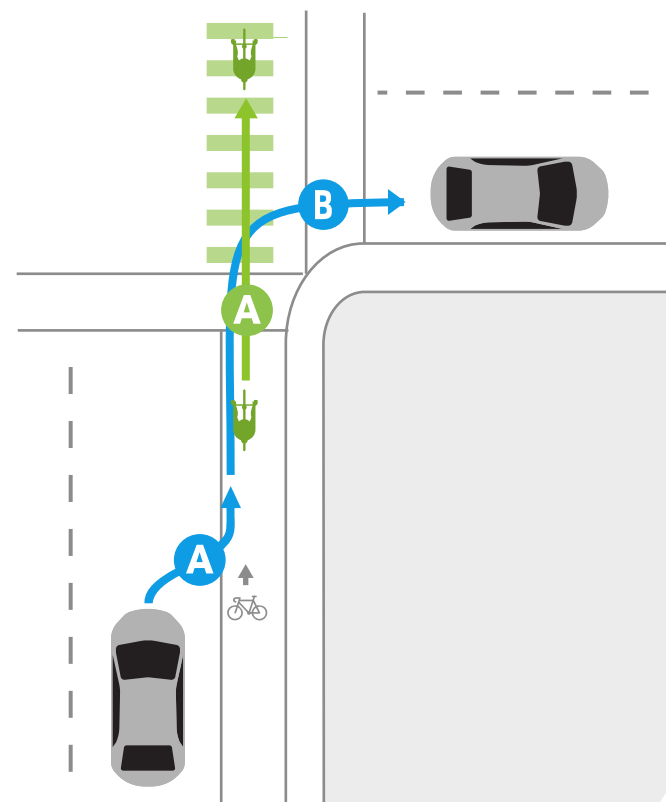
Green bike lanes remind bicyclists and motorists to look for each other at intersections and driveways. When approaching an intersection, follow the steps below:

Bicyclists going straight

- A** Look for turning motorists and continue straight.



Motorists turning right

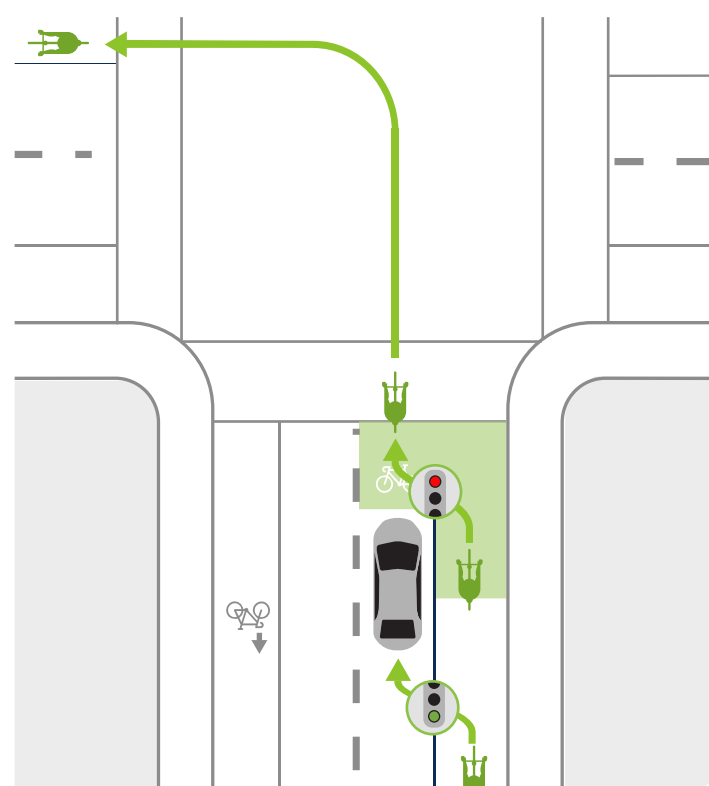
- A** Yield to bicyclists and merge into bike lane when clear.
- B** Complete right turn.



Bike Boxes

Bike boxes provide space at signalized intersections to help bicyclists make left turns.

-  When approaching a red light, move into the bike box and make your left turn when the light turns green.
-  When approaching a green light, merge into the travel lane in advance of the bike box and make your left turn.



Two-Stage Turn Boxes

Two-stage turn boxes provide space for bicyclists to make left turns at intersections. To use a two-stage turn box:

- A** Move into the bike box and face your new direction of travel.
- B** Proceed across the intersection when the light turns green.

