

**LEGEND**

**High Risk Network**

- High
- Moderate
- Low
- Equitable Transportation Community Areas
- Meeting Location

**City Council Districts**

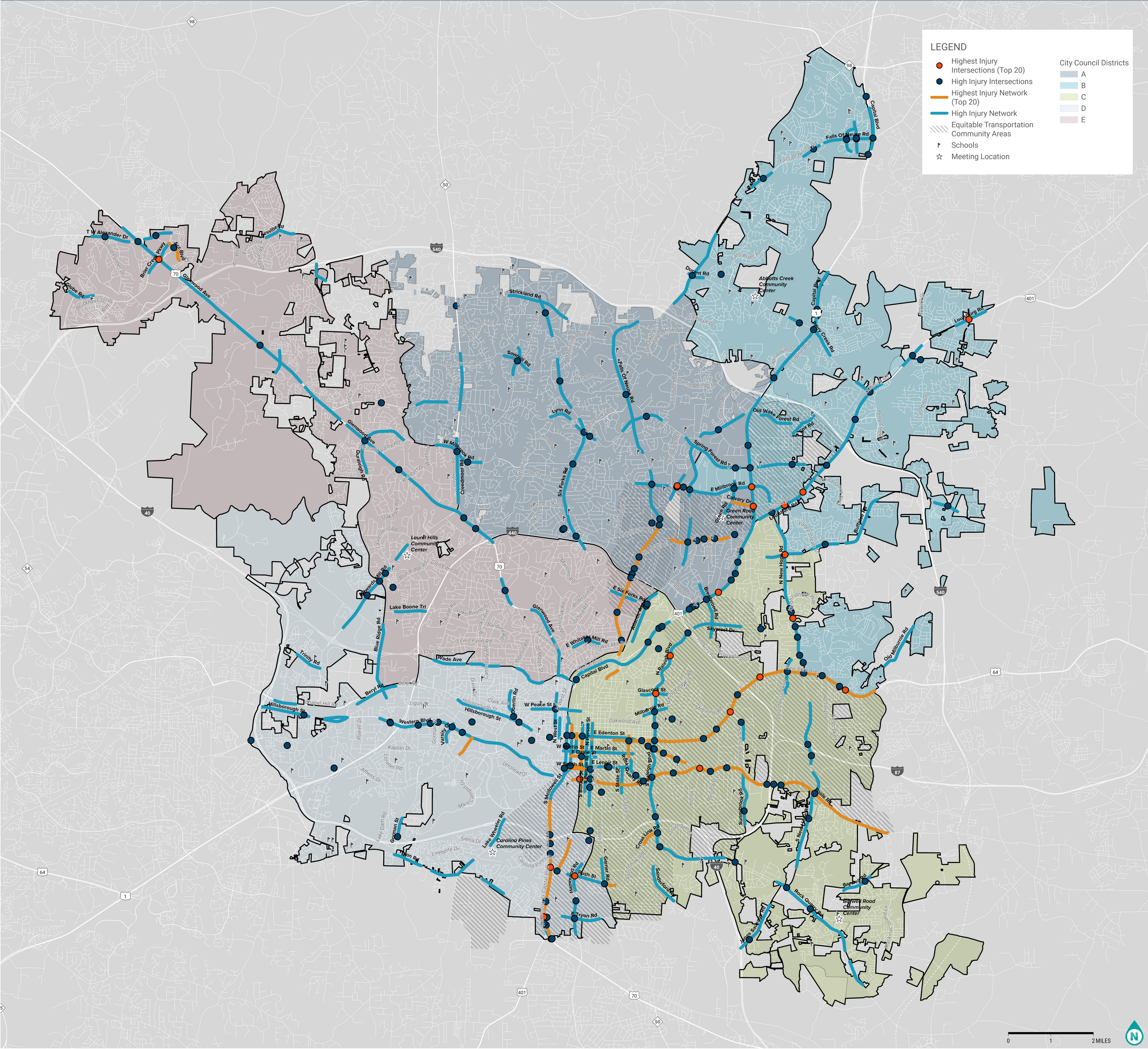
- A
- B
- C
- D
- E

Map of the City of Raleigh showing the High Risk Network. The map displays various roads color-coded by risk level: High (red), Moderate (orange), and Low (grey). It also shows City Council Districts (A, B, C, D, E) in different shades of blue and green. Key features include major highways (I-40, I-85, I-95), community centers (e.g., Laurel Hills, Abbot's Creek, Carver, and E. H. Rouse), and meeting locations marked with stars. A legend in the top right corner explains the symbols and colors used. A scale bar at the bottom right indicates distances up to 2 miles.





# Citywide High Injury Network



## High Injury Network and Intersections

The High Injury Network and High Injury Intersections are where the most severe traffic crashes have occurred. In Raleigh, only 8% of all roads are part of the High Injury Network and 3% of intersections are part of the High Injury Intersections, so **making a small part of the roadway network safer could reduce some of the most serious crashes.**



## Equitable Transportation Communities

A community that has historically been underserved by transportation systems and infrastructure and face barriers to safe and accessible transportation due to socioeconomic, environmental, or health-related challenges. (USDOT FHWA)



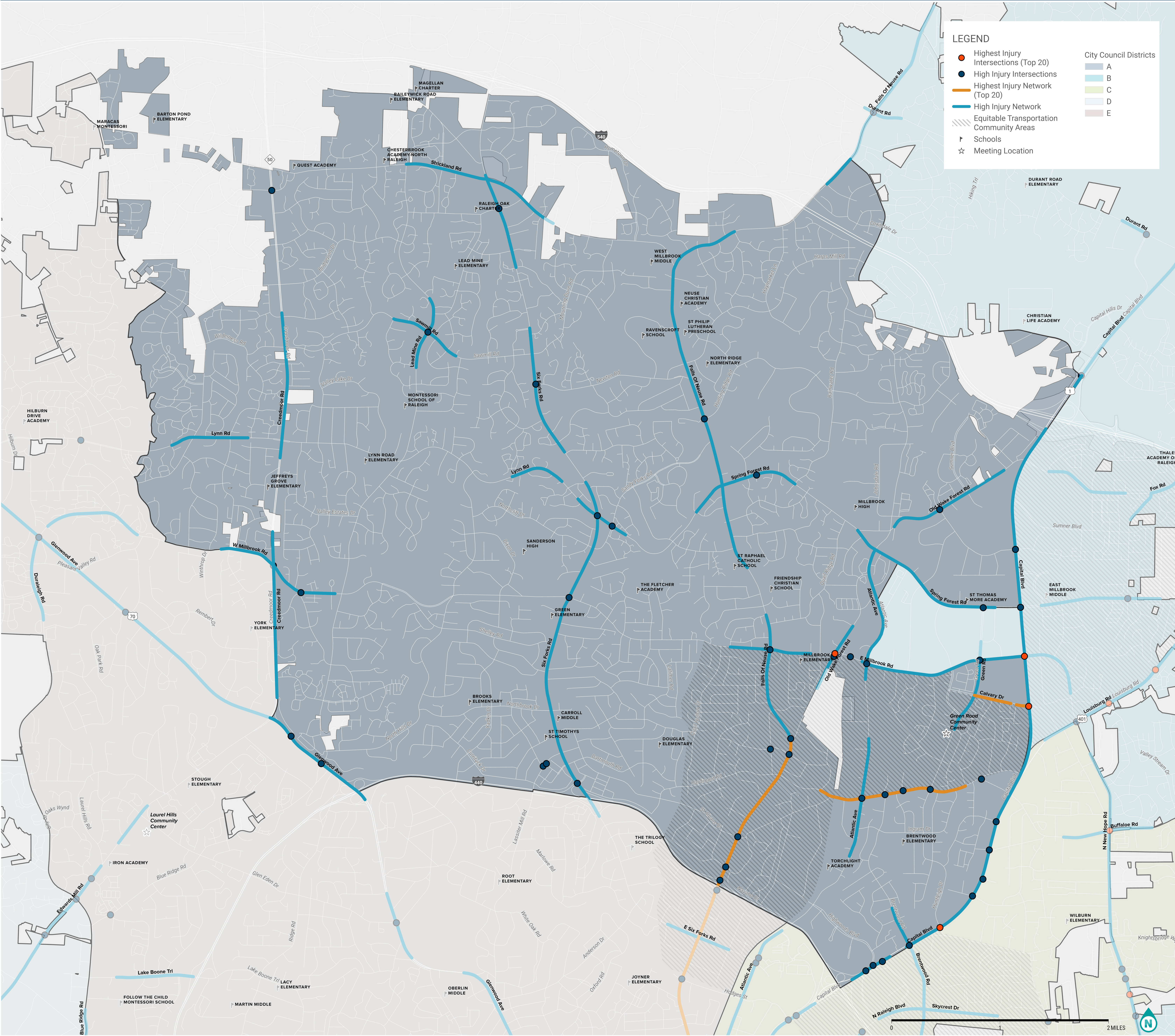
Safe  
Streets  
for All



Raleigh  
Transportation

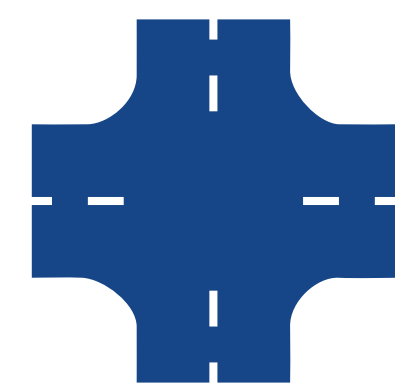


# District A High Injury Network



## High Injury Network in District A (Top 20)

- Calvary Dr
- Wake Forest Rd
- New Hope Church Rd



## High Injury Intersections in District A (Top 20)

- Capital Blvd at Huntleigh Dr
- Capital Blvd at Calvary Dr
- E Millbrook Rd at Old Wake Forest Rd
- Capital Blvd at Millbrook/New Hope Rd



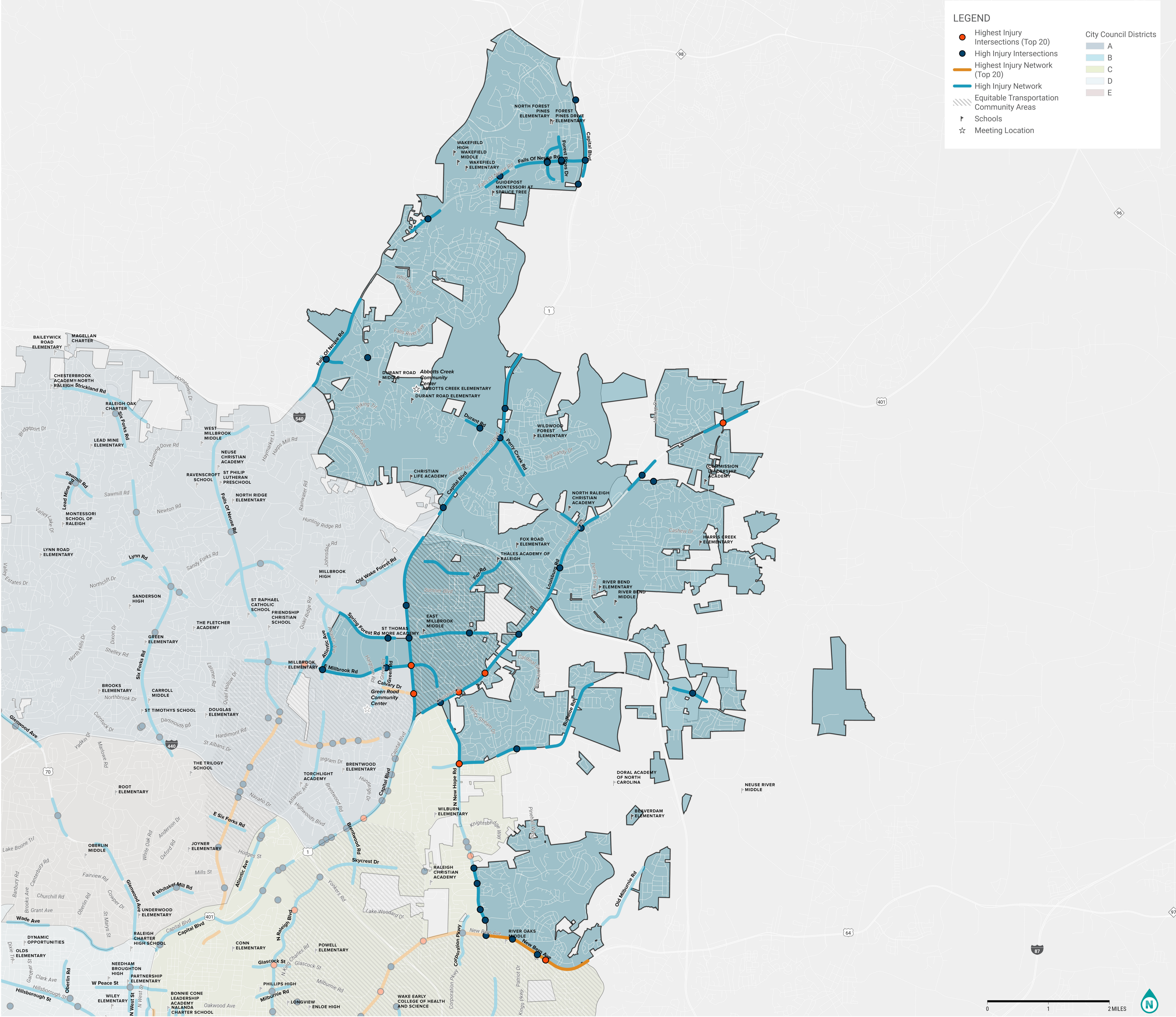
Safe  
Streets  
for All



Raleigh  
Transportation



# District B High Injury Network



## High Injury Network in District B (Top 20)

- New Bern Ave



## High Injury Intersections in District B (Top 20)

- Capital Blvd at Calvary Dr
- Louisburg Rd at Forestville Rd
- Louisburg Rd at Dansey Dr
- N New Hope Rd at Buffaloe Rd
- Louisburg Rd at Fox Rd
- New Bern Ave at N Rogers Ln
- Capital Blvd at Millbrook/New Hope Rd



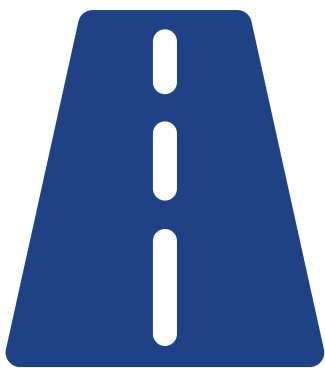
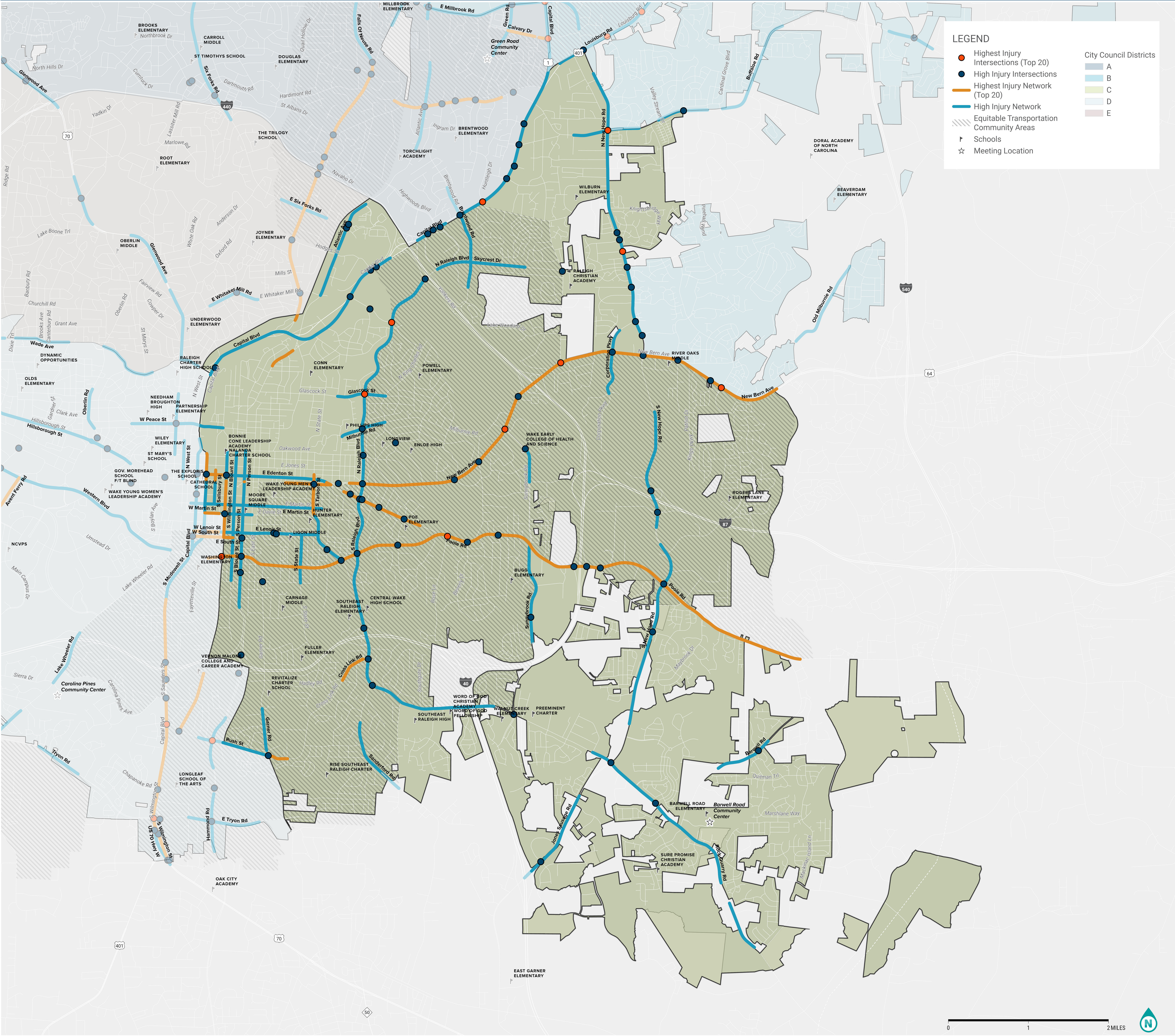
Safe  
Streets  
for All



Raleigh  
Transportation



# District C High Injury Network



## High Injury Network in District C (Top 10)

- W Edenton St
- N McDowell St
- N Tarboro St
- E South St
- W Davie St
- N Salisbury St
- Wake Forest Rd



## High Injury Intersections in District C (Top 10)

- New Bern Ave at Trawick Rd
- Capital Blvd at Huntleigh Dr
- Poole Rd at Rose Ln
- New Hope Rd at Easthampton Dr



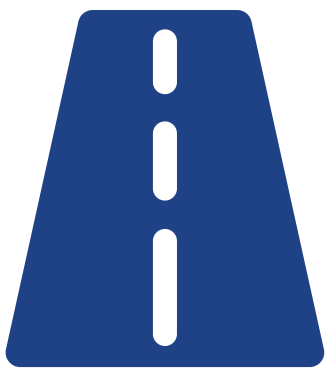
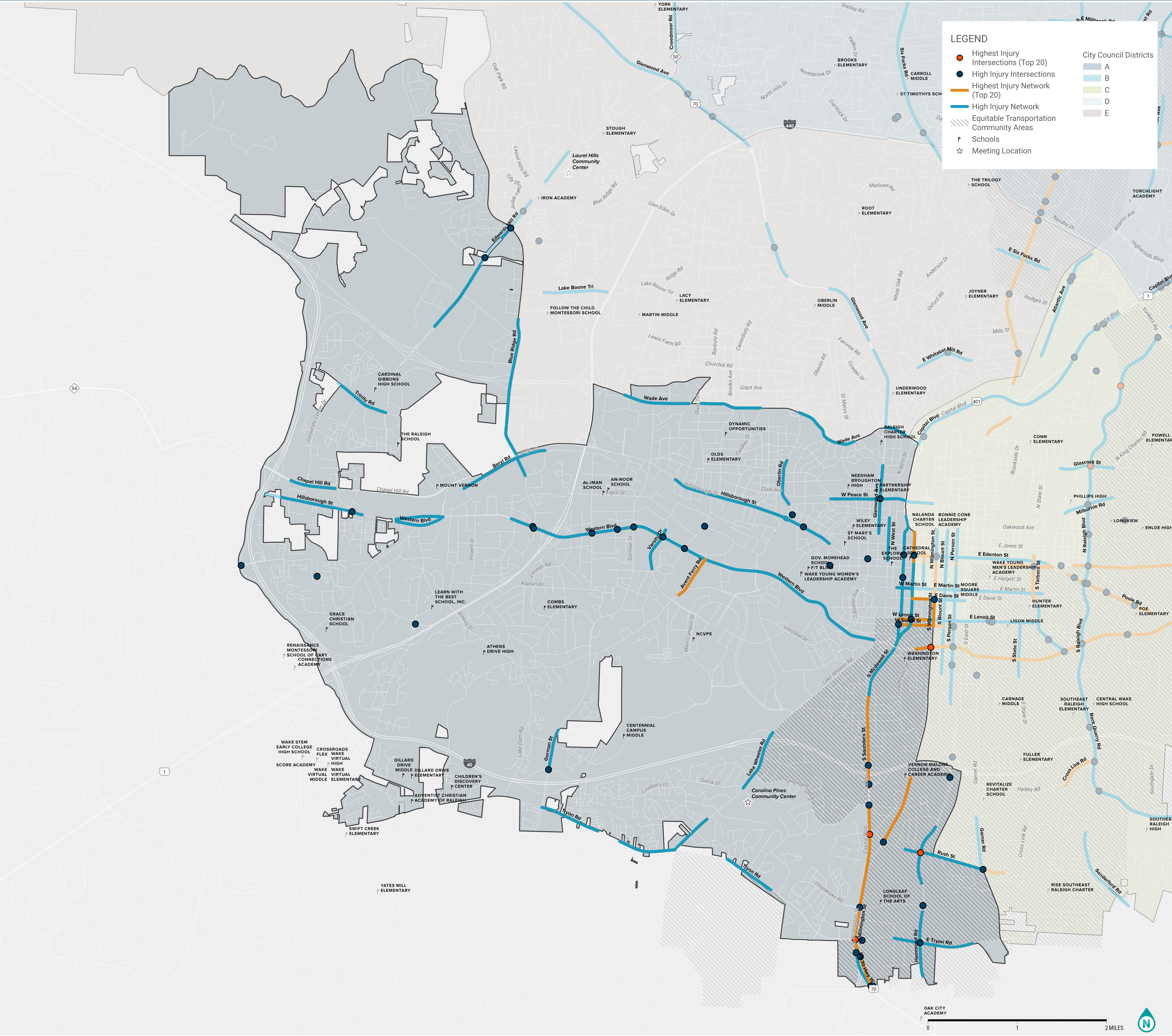
Safe  
Streets  
for All



Raleigh  
Transportation



# District D High Injury Network



## High Injury Network in District D (Top 20)

- N McDowell St
- E and W South St
- W Davie St
- S Saunders Rd
- W Lenoir St
- MLK Jr Blvd
- Avent Ferry Rd
- S Wilmington St



## High Injury Intersections in District D (Top 20)

- US-401 at Tryon Rd
- Hammond Rd at Rush St
- S Saunders Rd at Ileagnes Rd
- MLK Jr Blvd at S Wilmington St



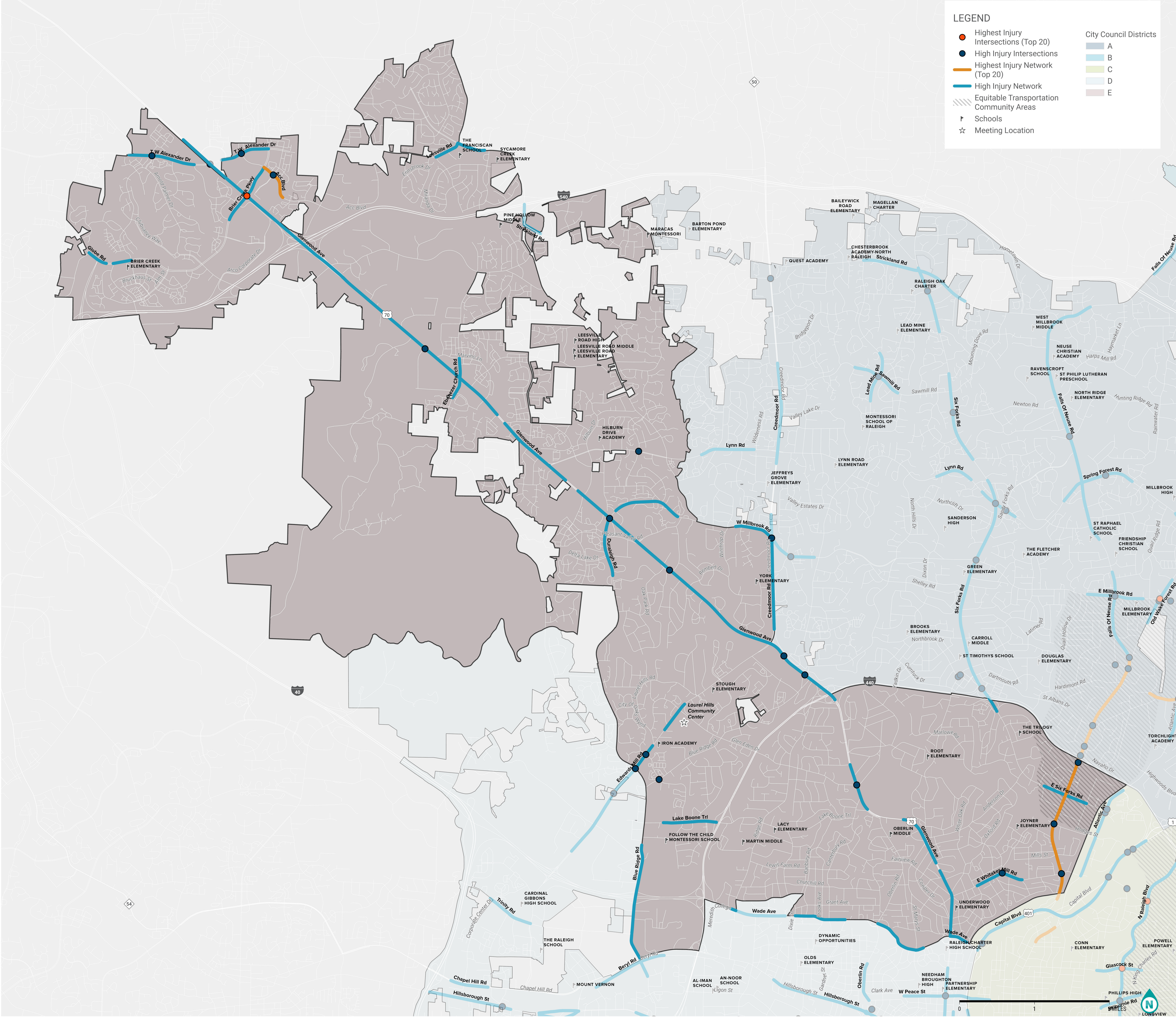
Safe  
Streets  
for All



Raleigh  
Transportation



# District E High Injury Network



## High Injury Network in District E (Top 20)

- Wake Forest Rd
- ACC Blvd



## High Injury Intersections in District E (Top 20)

- US 70 at Brier Creek Pkwy



Safe  
Streets  
for All



Raleigh  
Transportation