

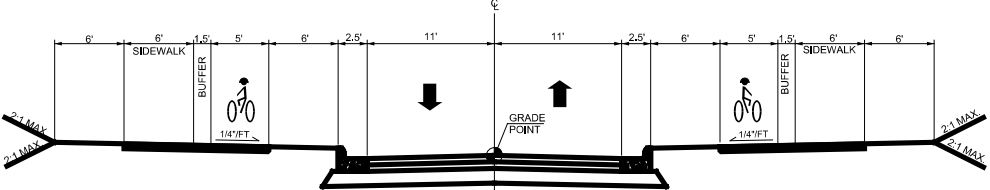
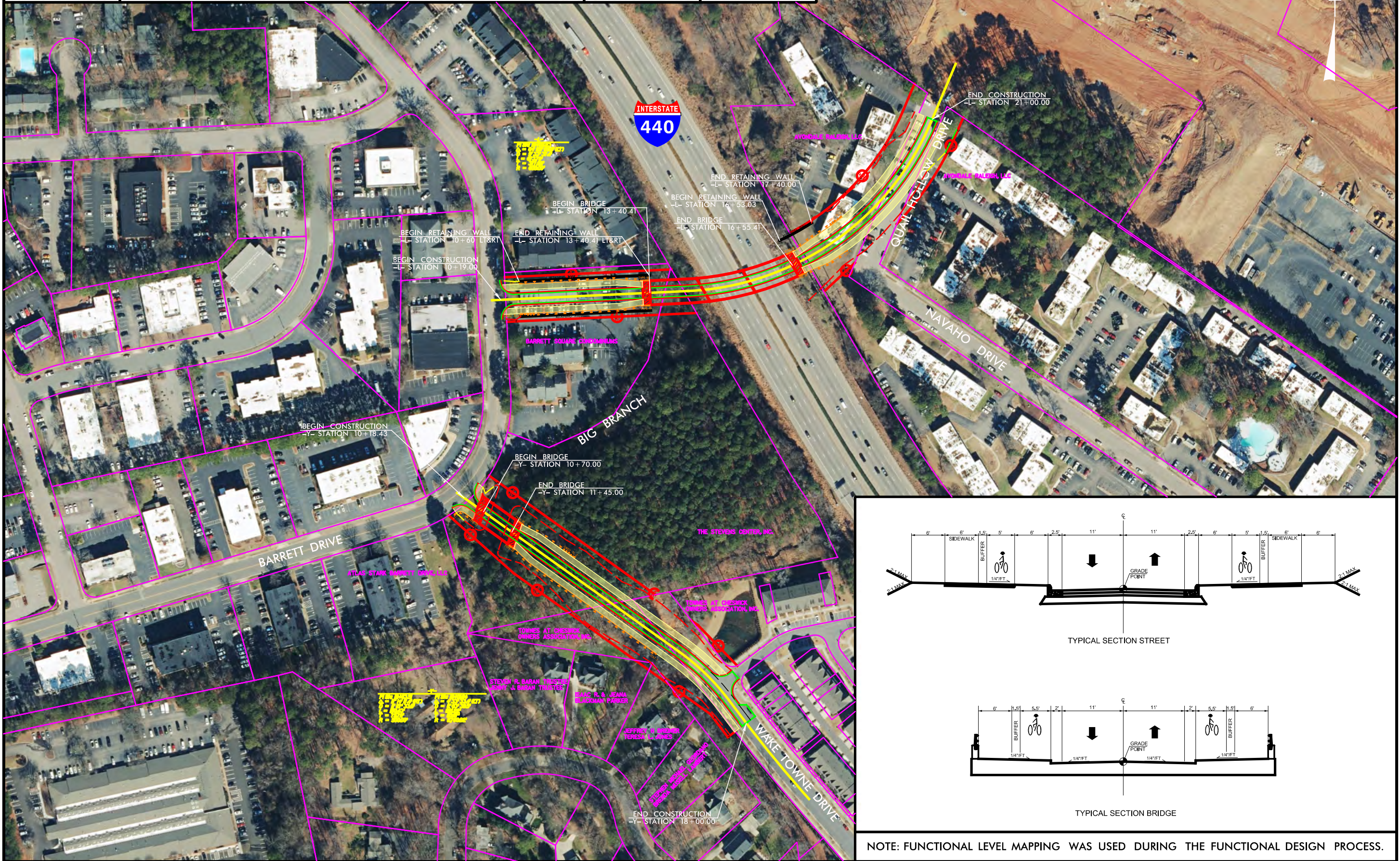


**PROPOSED MIDTOWN BRIDGE  
OVER I-440**  
**ALTERNATIVE 1 - CONVENTIONAL INTERSECTION DESIGN NORTH**  
PREPARED BY VHB FOR THE CITY OF RALEIGH TRANSPORTATION DEPARTMENT  
MAY 2022

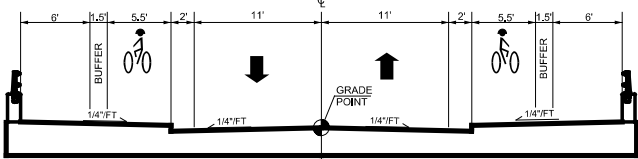


PLANS NOT  
TO SCALE

**PRELIMINARY PLANS**  
DO NOT USE FOR CONSTRUCTION



TYPICAL SECTION STREET



TYPICAL SECTION BRIDGE

NOTE: FUNCTIONAL LEVEL MAPPING WAS USED DURING THE FUNCTIONAL DESIGN PROCESS.





# PROPOSED MIDTOWN BRIDGE OVER I-440

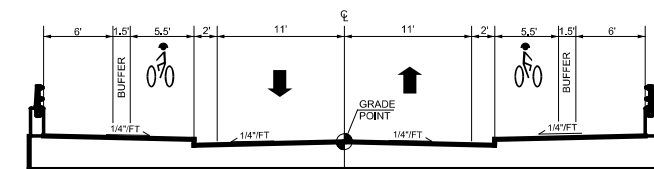
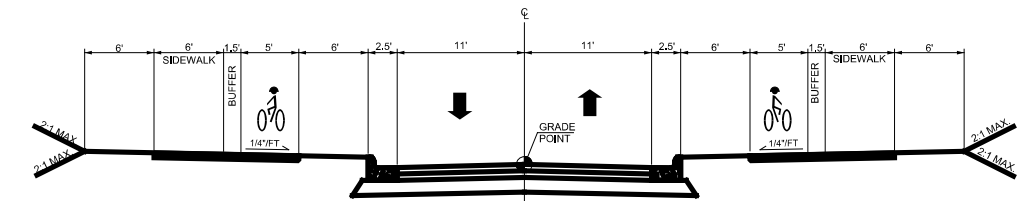
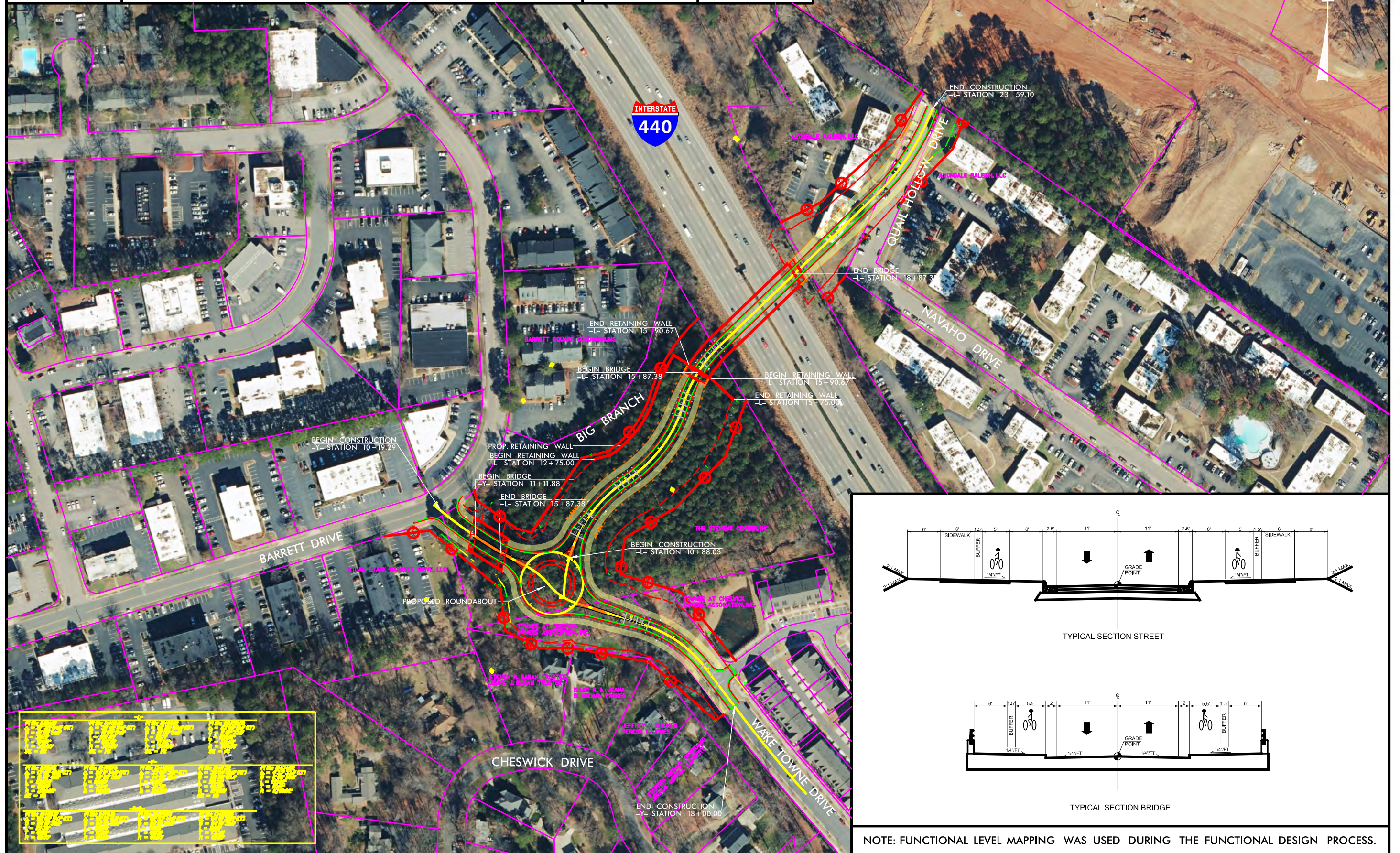
## ALTERNATIVE 2 – ROUNDABOUT DESIGN

PREPARED BY VHB FOR THE CITY OF RALEIGH TRANSPORTATION DEPARTMENT  
MAY 2022



PLANS NOT  
TO SCALE

PRELIMINARY PLANS  
DO NOT USE FOR CONSTRUCTION



NOTE: FUNCTIONAL LEVEL MAPPING WAS USED DURING THE FUNCTIONAL DESIGN PROCESS.





**PROPOSED MIDTOWN BRIDGE  
OVER I-440**

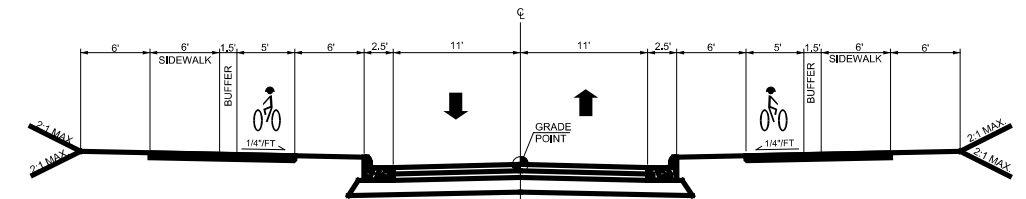
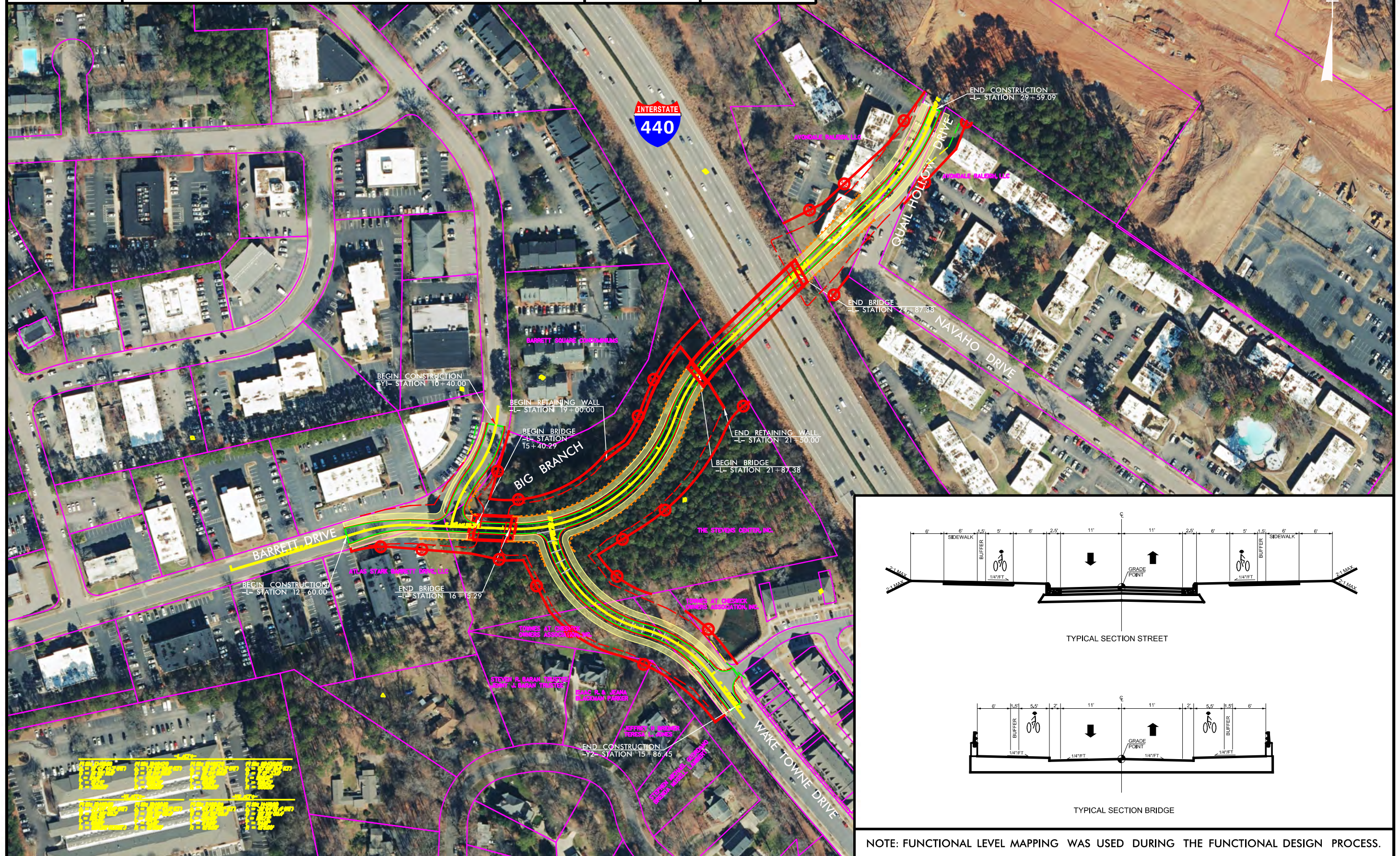
**ALTERNATIVE 3 - CONVENTIONAL INTERSECTION DESIGN**

PREPARED BY VHB FOR THE CITY OF RALEIGH TRANSPORTATION DEPARTMENT  
MAY 2022

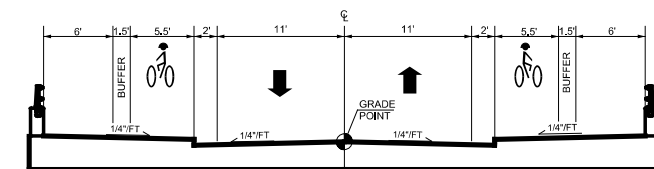


PLANS NOT  
TO SCALE

**PRELIMINARY PLANS**  
DO NOT USE FOR CONSTRUCTION



TYPICAL SECTION STREET



TYPICAL SECTION BRIDGE

NOTE: FUNCTIONAL LEVEL MAPPING WAS USED DURING THE FUNCTIONAL DESIGN PROCESS.